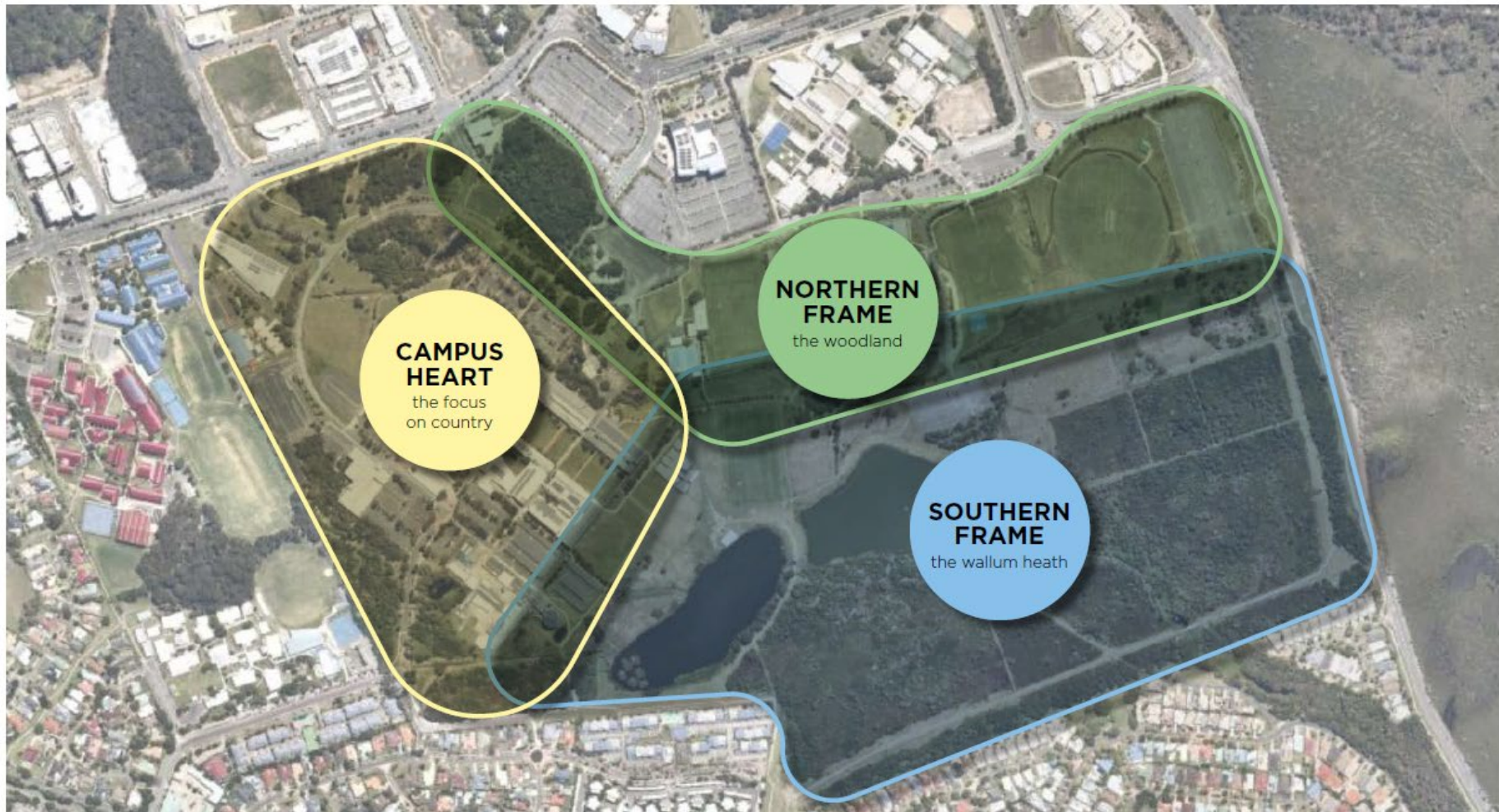


LANDSCAPE AREAS



CAMPUS HEART

THE FOCUS ON COUNTRY

Amplifying our relationship with Country at the heart of the campus, this planting palette responds to the ancient landscape, the built environment and ongoing maintenance and operational considerations. The species have been selected against a criteria of being local to the area, having known First Nations' uses, offering seasonality, have robustness in a built landscape and having a suitable respond to CPTED principles.



CAMPUS HEART

THE FOCUS ON COUNTRY

Key Species



Acmena hemilampra

Blue Satinash



Archontophoenix cunninghamiana

Piccabeen Palm



Backhousia citriodora

Lemon Myrtle



Ficus obliqua

Small Leaved Fig



Melaleuca viridiflora

Broad-leaved Tea Tree



Licuala ramsayii

Queensland Fan Palm



Banksia robur

Swamp Banksia



Melaleuca pachyphylla

Green Wallum
Bottlebrush



Callistemon

Great Balls of Fire



Anigozanthos

Landscape Scarlet



Hovea acutifolia

Pointed-leaf Hovea



Doryanthes excelsa

Gymea Lily



Banksia spinulosa

Hairpin Banksia



Chrysocephalum apiculatum

Yellow Buttons



Dendrobium speciosum

King Orchid



Doodia apera

Prickly Rasp Fern

CAMPUS HEART

THE FOCUS ON COUNTRY

Upper Level

	BOTANICAL NAME	COMMON NAME	FIRST NATIONS USE	AUSTRALIAN NATIVE	LOCALLY OCCURRING	SUITABLE FOR WET AREAS
Sun	<i>Acmena hemilampra</i>	Blue Satinash				
	<i>Acronychia imperforata</i>	Beach Acronychia				
	<i>Archontophoenix cunninghamiana</i>	Piccabeen Palm				
	<i>Backhousia citriodora</i>	Lemon Myrtle				
	<i>Banksia integrifolia</i>	Coastal Banksia				
	<i>Castanospermum australe</i>	Black Bean				
	<i>Elaeocarpus reticulatus</i>	Blueberry Ash				
	<i>Eucalyptus bancrofti</i>	Pink Bloodwood				
	<i>Ficus obliqua</i>	Small Leaved Fig				
	<i>Glochidion ferdinandi</i>	Cheese Tree				
	<i>Hymenosporum flavum</i>	Native Frangipani				
	<i>Melaleuca quinquenervia</i>	Broad Leaved Paperbark				
	<i>Melaleuca viridiflora</i>	Broad-leaved Tea Tree				
	<i>Podocarpus elatus</i>	Plum Pine				
	<i>Syzygium leuhmannii</i>	Small Leaved Lilly Pilly				
	<i>Syzygium oleosum</i>	Blue Lilly Pilly				
	<i>Tristaniopsis laurina</i>	Water Gum				
	<i>Waterhousea floribunda</i>	Weeping Lilly Pilly				
Shade	<i>Atractocarpus fitzalanii</i>	Brown Gardenia				
	<i>Cyathea cooperi</i>	Scaly Tree Fern				
	<i>Licuala ramsayii</i>	QLD Fan Palm				
	<i>Livistona australis</i>	Cabbage Tree Palm				
	<i>Stenocarpus sinuatus</i>	Firewheel Tree				

*	Cultivar - proven varieties suited to SEQ, to be used in the campus heart only
	Common across all palettes

Mid Level

	BOTANICAL NAME	COMMON NAME	FIRST NATIONS USE	AUSTRALIAN NATIVE	LOCALLY OCCURRING	SUITABLE FOR WET AREAS	
Sun	<i>Backhousia myrtifolia</i>	Grey Myrtle					
	<i>Banksia oblongifolia</i>	Dwarf Banksia					
	<i>Banksia robur</i>	Swamp Banksia					
	<i>Banksia spinulosa</i>	Hairpin Banksia					
	<i>Callistemon</i>	Great Balls of Fire*					
	<i>Casuarina</i>	Greenwave*					
	<i>Grevillea</i>	Honey Gem*					
	<i>Grevillea</i>	Orange Marmalade*					
	<i>Hovea acutifolia</i>	Pointed-leaf Hovea					
	<i>Leptospermum ilversidgel</i>	Olive Tea Tree					
	<i>Melaleuca</i>	Mini Quin*					
	<i>Melaleuca pachyphylla</i>	Green Wallum Bottlebrush					
	<i>Melaleuca thymifolia</i>	Honey Myrtle					
	<i>Phyllanthus cuscutiflorus</i>	Pink Phyllanthus					
	<i>Xanthorrhoea johnsonii</i>	Forest Grass Tree					
	Shade	<i>Alpinia arrundelliana</i>	Dwarf Native Ginger				
		<i>Alpinia caerulea</i>	Native Ginger				
		<i>Atractocarpus chartaceus</i>	Native Gardenia				
<i>Cordylone petiolaris</i>		Broad Leaved Palm Lily					
<i>Doryanthes excelsa</i>		Gynea Lily					
<i>Melastoma malabathricum</i>	Blue Tongue						

Lower Level

	BOTANICAL NAME	COMMON NAME	FIRST NATIONS USE	AUSTRALIAN NATIVE	LOCALLY OCCURRING	SUITABLE FOR WET AREAS
Sun	<i>Anigozanthos</i>	Landscape Scarlet Kangaroo Paw*				
	<i>Austromyrtus dulcis</i>	Coastal Midyim				
	<i>Baeckea virgata</i>	Dwarf Heath Myrtle				
	<i>Banksia</i>	Roller Coaster*				
	<i>Callistemon</i>	Little John*				
	<i>Carpobrotus glaucescens</i>	Coastal Pigface				
	<i>Casuarina</i>	Cousin It*				
	<i>Chrysocephalum apiculatum</i>	Yellow Buttons				
	<i>Dampiera stricta</i>	Wallum Dampiera				
	<i>Dianella caerulea</i>	Blue Flax Lily				
	<i>Dianella longifolia</i>	Tall Blue Flax Lily				
	<i>Goodenia rotundifolia</i>	Cover Up*				
	<i>Grevillea</i>	Lime & Soda*				
	<i>Grevillea</i>	Bronze Rambler*				
	<i>Lomandra</i>	Verday*				
	<i>Lomandra hystrix</i>	Tropic Cascade*				
	<i>Myoporum parvifolium</i>	Coastal Boobiala				
	<i>Pandorea jasminoides</i>	Bower Vine				
	<i>Scaevola</i>	Mauve Clusters*				
	<i>Westringia</i>	Mundi*				
Shade	<i>Xanthorrhoea fulva</i>	Swamp Grass Tree				
	<i>Adiantum hispidulum</i>	Rough Maidenhair Fern				
	<i>Alocasia brisbanensis</i>	Cunjevoi				
	<i>Asplenium australasicum</i>	Bird Nest Fern				
	<i>Christella dentata</i>	Binung				
	<i>Cissus antarctica</i>	Kangaroo Vine				
	<i>Davallia pyxidata</i>	Hare's Foot Fern				
	<i>Dendrobium speciosum</i>	King Orchid				
	<i>Doodia aspera</i>	Prickly Rasp Fern				
	<i>Mentha diemenica</i>	Native Mint				
<i>Microsorium pustulatum</i>	Kangaroo Fern					
<i>Peperomia tetraphylla</i>	Native Peperomia					
<i>Viola hederacea</i>	Native Violet					

THE SOUTHERN FRAME

THE WALLUM HEATH

Drawing on the diversity of the Mooloolah River National Park and the originally translocated vegetation from Brightwater, the planting palette looks to complement and expand on the local ecosystems. The palette creates the initial framework for future revegetation and landscape projects within areas around and to the south east of the water bodies. Species have been coordinated with production lists of local nurseries.



THE SOUTHERN FRAME

THE WALLUM HEATH

Key Species



Callistemon viminalis

Bottlebrush



Corymbia tessellaris

Moreton Bay Ash



Eucalyptus resinifera

Red Mahogany



Flindersia schottiana

Bumpy Ash



Lophostemon suaveolens

Swamp Turpentine



Melaleuca quinquenervia

Paperbark



Acacia hubbardiana

Junipera Wattle



Banksia oblongifolia

Fern Leaf Banksia



Austromyrtus dulcis

Coastal Midyim



Baumea rubiginosa

Twig Rush



Blandfordia grandiflora

Christmas Bells



Blechnum cartilagineum

Gristle Fern



Ficinia nodosa

Knobby Club Rush



Gahnia sieberiana

Red Fruit Saw Sedge



Schoenoplectiella mucronata

Bog Rush



Viola hederacaea

Native Violet

THE SOUTHERN FRAME

THE WALLUM HEATH

Upper Level

BOTANICAL NAME	COMMON NAME	FIRST NATIONS USE	AUSTRALIAN NATIVE	LOCALLY OCCURRING	SUITABLE FOR WET AREAS
Callistemon viminalis	Bottlebrush				
Casuarina glauca	Swamp She Oak				
Corymbia tessellaris	Moreton Bay Ash				
Endiandra sieberi	Hard Corkwood				
Eucalyptus conglomerata	Swamp Stringybark				
Eucalyptus pilularis	Blackbutt				
Eucalyptus resinifera	Red Mahogany				
Eucalyptus robusta	Swamp Mahogany				
Ficus macrophylla	Moreton Bay Fig				
Ficus obliqua	Small Leaved Fig				
Ficus rubiginosa	Port Jackson Fig				
Flindersia schottiana	Bumpy Ash				
Guioa semiglauc	Wild Quince				
Livistona australis	Cabbage Tree Palm				
Lophostemon suaveolens	Swamp Turpentine				
Melaleuca quinquenervia	Broad Leaved Paperbark				
Tristaniopis laurina	Water Gum				
Waterhousea floribunda	Weeping Lily Pilly				

Mid Level

BOTANICAL NAME	COMMON NAME	FIRST NATIONS USE	AUSTRALIAN NATIVE	LOCALLY OCCURRING	SUITABLE FOR WET AREAS
Acacia hubbardiana	Junipera Wattle				
Acmena ingens	Red Apple Lily Pilly				
Acmena smithii	Lily Pilly				
Aotis ericoides	Golden Pea				
Backhousia myrtifolia	Grey Myrtle				
Banksia oblongifolia	Dwarf Banksia				
Banksia robur	Swamp Banksia				
Grevillea banksii	Banks Grevillea				
Hovea acutifolia	Pointed-leaf Hovea				
Leptospermum liversidgei	Olive Tea Tree				
Leptospermum brachyandrum	Tea Tree				
Melaleuca linariifolia	Narrow Leaved Paperbark				
Melaleuca pachyphylla	Green Wallum Bottlebrush				
Melaleuca thymifolia	Honey Myrtle				
Alpinia caerulea	Native Ginger				
Cordyline congesta	Narrow Leaved Palm Lily				
Doryanthes excelsa	Gymea Lily				
Melastoma malabathricum	Blue Tongue				

Lower Level

BOTANICAL NAME	COMMON NAME	FIRST NATIONS USE	AUSTRALIAN NATIVE	LOCALLY OCCURRING	SUITABLE FOR WET AREAS
Austromyrtus dulcis	Coastal Midyim				
Baumea rubiginosa	Twig Rush				
Blandfordia grandiflora	Christmas Bells				
Carex apressa	Tall Sedge				
Cyperus polystachyos	Bunchy Sedge				
Dianella longifolia	Tall Blue Flax Lily				
Dillwynia floribunda	Showy Parrot Pea				
Fimbrinia nodosa	Knobby Club Rush				
Gahnia clarkii	Saw Sedge				
Gahnia sieberiana	Red Fruit Saw Sedge				
Juncus prismatocarpus	Tufted				
Juncus usiatus	Common Rush				
Lomandra longifolia	Matt Rush				
Petrophile shirleyae	Cone Sticks				
Philydrium lanuginosum	Frogmouth				
Schoenoplectiella mucronata	Bog Bulrush				
Xanthorrhoea fulva	Swamp Grass Tree				
Blechnum cartilagineum	Gristle Fern				
Blechnum indicum	Water Fern				
Cissus antarctica	Kangaroo Vine				
Crinum pedunculatum	River Lily				
Hibbertia scandens	Snake Vine				
Viola hederacea	Native Violet				

*	Cultivar - proven varieties suited to SEQ, to be used in the campus heart only
	Common across all palettes

THE NORTHERN FRAME

THE WOODLAND

The Northern Frame is the high ground which captures the sports precinct, Sippy Downs Drive frontage and surrounding landscape north of the two water bodies. Typically dryer and harsher growing conditions, the planting palette contains hardier species which offer amenity, habitat and connections back to ancient landscapes while being appropriate for this modern and functional precinct.



Artists Impression

THE NORTHERN FRAME

THE WOODLAND



Araucaria cunninghamii

Hoop Pine



Corymbia intermedia

Pink Bloodwood



Corymbia tessellaris

Moreton Bay Ash



Ficus macrophylla

Moreton Bay Fig



Ficus obliqua

Small Leaved Fig



Podocarpus elatus

Plum Pine



Acmena smithii

Lily Pilly



Callistemon

Great Balls of Fire



Dodonaea viscosa

Hop Bush



Goodenia ovata

Hop Goodenia



Hovea acutifolia

Pointed-leaf Hovea



Jacksonia scoparia

Dogwood



Xanthorrhoea johnsonii

Forest Grass Tree



Dianella revoluta

Blueberry Lily



Lomandra

Verday



Themeda australis

Kangaroo Grass

THE NORTHERN FRAME

THE WOODLAND

Upper Level

BOTANICAL NAME	COMMON NAME	FIRST NATIONS USE	AUSTRALIAN NATIVE	LOCALLY OCCURRING	SUITABLE FOR WET AREAS
<i>Araucaria cunninghamii</i>	Hoop Pine				
<i>Backhousia citriodora</i>	Lemon Myrtle				
<i>Castanospermum australe</i>	Black Bean				
<i>Corymbia intermedia</i>	Pink Bloodwood				
<i>Corymbia racemosa</i>	Scribbly Gum				
<i>Corymbia tessellaris</i>	Moreton Bay Ash				
<i>Cupaniopsis parvifolia</i>	Small Leaved Tuckeroo				
<i>Ficus macrophylla</i>	Moreton Bay Fig				
<i>Ficus obliqua</i>	Small Leaved Fig				
<i>Ficus rubiginosa</i>	Port Jackson Fig				
<i>Flindersia australis</i>	Crow's Ash				
<i>Livistona australis</i>	Cabbage Tree Palm				
<i>Lophostemon confertus</i>	Brush Box				
<i>Melaleuca quinquenervia</i>	Broad Leaved Paperbark				
<i>Podocarpus elatus</i>	Plum Pine				
<i>Syncarpia glomulifera</i>	Turpentine Tree				

Mid Level

BOTANICAL NAME	COMMON NAME	FIRST NATIONS USE	AUSTRALIAN NATIVE	LOCALLY OCCURRING	SUITABLE FOR WET AREAS
<i>Acacia falcata</i>	Sickle Wattle				
<i>Acacia hubbardiana</i>	Yellow Prickly Moses				
<i>Acacia myrtifolia</i>	Myrtle Wattle				
<i>Acmena smithii</i>	Lily Pilly				
<i>Backhousia myrtifolia</i>	Grey Myrtle				
<i>Callistemon</i>	Great Balls of Fire*				
<i>Dodonaea viscosa</i>	Hop Bush				
<i>Goodenia ovata</i>	Hop Goodenia				
<i>Grevillea</i>	Honey Gem*				
<i>Hovea acutifolia</i>	Pointed-leaf Hovea				
<i>Jacksonia scoparia</i>	Dogwood				
<i>Leptospermum polygalifolium</i>	Tantoon				
<i>Melaleuca linarifolia</i>	Narrow Leaved Paperbark				
<i>Oxylobium robustum</i>	Golden Shaggy Pea				
<i>Xanthorrhoea johnsonii</i>	Forest Grass Tree				
<i>Alpinia caerulea</i>	Native Ginger				
<i>Cordyline petiolaris</i>	Broad Leaved Palm Lily				
<i>Doryanthes excelsa</i>	Gynea Lily				

Lower Level

BOTANICAL NAME	COMMON NAME	FIRST NATIONS USE	AUSTRALIAN NATIVE	LOCALLY OCCURRING	SUITABLE FOR WET AREAS
<i>Austromyrtus dulcis</i>	Coastal Midyim				
<i>Baeckea virgata</i>	Dwarf Heath Myrtle				
<i>Callistemon</i>	Little John*				
<i>Chrysocephalum apiculatum</i>	Yellow Buttons				
<i>Cymbopogon refractus</i>	Barbwire Grass				
<i>Dianella revoluta</i>	Blueberry Lily				
<i>Goodenia rotundifolia</i>	Cover Up*				
<i>Lomandra</i>	Verday*				
<i>Lomandra hystrix</i>	Mat Rush				
<i>Myoporum parvifolium</i>	Coastal Boobiala				
<i>Pandorea jasminoides</i>	Bower Vine				
<i>Themeda australis</i>	Kangaroo Grass				
<i>Westringia</i>	Mundi*				
<i>Cissus antarctica</i>	Kangaroo Vine				
<i>Dianella longifolia</i>	Tall Blue Flax Lily				
<i>Hibbertia scandens</i>	Snake Vine				

*	Cultivar - proven varieties suited to SEQ, to be used in the campus heart only
	Common across all palettes

RESOURCES

The UniSC Sippy Downs campus planting palette was prepared using the following references:

Aunty Beverly Hand
Buranga Centre, University of the Sunshine Coast

Noosa Native Plants
www.noosasnativeplants.com.au

Mooloolah River Landscare
www.mrl.org.au

Department of Environment & Science
Wetland Info - Mooloolah River National Park
www.wetlandinfo.des.qld.gov.au

Sunshine Coast Council
Street Tree Masterplan 2018
www.sunshinecoast.qld.gov.au

Maroochy Catchment Centre
www.maroochycatchmentcentre.org.au

