



University of the
Sunshine Coast
Australia

Start at UniSC

Guide for
international
students



Welcome

At UniSC, we are renowned for our personal approach to teaching. That's why we are consistently rated one of the top universities in Australia for teaching quality and overall student experience.

We offer hands-on and flexible learning options across more than 120 programs, at a network of teaching locations from Moreton Bay, just north of Brisbane, to the famous Fraser Coast. Since 1996, we have supported more than 39,000 graduates achieve their educational and career goals.

As all our programs include practical training or internships and focus on the core skills students need to succeed in the future workplace, we are considered one of the best universities in Australia for employer satisfaction with graduates.

Our students learn from some of the most highly regarded experts in their fields, who are nationally awarded and regularly recognised for excellence in learning and teaching.

UniSC students come from diverse backgrounds but share the same goals: to discover their future path, to become the best they can be, and to make their mark on the world.

We look forward to helping you discover the world of opportunities that await.

Professor Helen Bartlett
Vice-Chancellor and President



Contents

Understanding your letter of offer	1
How to accept your offer	2
Overseas Student Health Cover (OSHC)	3
Organising your visa	4
Choosing courses and enrolling online	5
Arriving in Australia	7
Living in Australia	8
Attending Orientation	12
Academic calendar	13
Student support services	14
UniSC study locations	16
UniSC Sunshine Coast	17
Thompson Institute	24
UniSC Moreton Bay	25
UniSC Caboolture	27
UniSC Gympie	29
UniSC Fraser Coast	31
Important information	33
Checklist	35

Published by University of the Sunshine Coast. May 2024

All information contained in this publication is correct at the time of going to press, however UniSC reserves the right to alter any course, procedure or fee. Prospective students should check for any amendments before submitting an application. For up-to-date information, visit usc.edu.au

University of the Sunshine Coast is registered on the Commonwealth Register of Institutions and Courses for Overseas Students (CRICOS).

Understanding your letter of offer

Your letter of offer and materials include essential information about accepting your offer, completing your enrolment, studying at UniSC and living in Australia. Below is an explanation of terms mentioned in your letter of offer.

Program: The program refers to the UniSC program for which you have applied and been made an offer.

Campus: This is the UniSC campus at which your program will be held. Not all UniSC programs are offered at all campuses, while other programs have strict limits on how many students can enrol at a campus. When it is time to enrol in your courses, you should ensure that you enrol at the campus for which you have been made an offer.

Start date: This is the date when your program commences.

End date: This is the estimated date by which you will have completed your program and received your results. This date is based on the minimum number of courses required to complete the program.

Orientation date: This is the day when Orientation activities are scheduled to commence. For our semester intakes, Orientation takes place over several days. For other intakes, Orientation activities may only fall on one day.

First period tuition fee and estimated total tuition fees*: These are the estimated tuition fees you will pay for your program. Tuition fees do not include the cost of books, materials, equipment or field trips. Tuition fees are based on the minimum number of courses required to complete the program, within the standard program duration, and are reviewed each calendar year. The fee you must pay for a given teaching period is that which has been approved by UniSC for the calendar year in which the semester/session commences. Any increase in tuition fees from one calendar year to the next for your program of study will be no more than 7 percent. All fees are in Australian dollars (A\$).

Scholarship details: If you have been awarded a scholarship by UniSC, your Letter of Offer will include details about the scholarship and how this reduces your tuition fees.

* Payment arrangements may be different for those students whose tuition fees are paid by their home institution or as a scholarship.

Important program information: Your Letter of Offer includes a link to the program page, which provides program information, including the program structure, inherent academic requirements, and post-admission requirements. This section may also include additional, program specific information you need to be aware of.

Fees and charges payable: Before you can enrol, and apply for your Student visa (if applicable), you need to accept your offer and pay the amount indicated here. This amount is usually your first teaching period tuition fee* and the cost of any Overseas Student Health Cover you have asked UniSC to arrange on your behalf. If you are accepting a packaged letter of offer that commences with a UniSC English language, pathway or undergraduate program at UniSC, you will usually need to pay tuition fees towards all programs in the package to receive your Confirmations of Enrolment (CoEs).

Your letter of offer is a written agreement between you and UniSC.

Your written agreement includes:

- ✓ Letter of Offer
- ✓ Important Information
- ✓ Refund Information
- ✓ Credit Transfer Advice (if applicable)

You should read all the information carefully before accepting your offer and entering into a written agreement with UniSC. There are two possible offer letter types you may receive from UniSC:

Unconditional offer: You meet all the entry requirements for your chosen program of study. You can accept the offer and move to the next phase of the admission process. Refer to your offer for full details on what is required to progress to the next step.

Conditional offer: You do not yet meet all the entry requirements for your chosen program of study. You will need to meet the conditions as outlined in your conditional offer. Conditions could include needing to meet UniSC's academic, English language, or other program requirements. You will not be able to move to the next phase of the admission process until you have met the conditions. Refer to your offer for full details on what is required.



How to accept your offer

This section will tell you what you need to do to accept your offer, pay fees and enter into a written agreement with UniSC.

- STEP 1** Read all the information contained in your letter of offer carefully.
- STEP 2** If you received an **unconditional offer** proceed to step 3.
If you received a **conditional offer** you will need to meet your conditions as outlined in your offer before you can proceed.
- STEP 3** If you decide that you want to accept your offer and enter into a written agreement refer to the 'How to accept your offer' section in your letter of offer and follow the instructions.
Your UniSC letter of offer and associated documentation is an agreement between you and UniSC.
To accept your UniSC offer and the terms of the agreement, follow the steps in the 'How to accept your offer' section of your UniSC offers.

Before acceptance

By accepting your offer, you are agreeing that you have read and understood the information provided to you in your letter of offer, including the information provided to you in the Important Information, Refund Information and Credit Transfer Advice (if applicable).

After acceptance

On accepting your offer and on receipt of your payment* by UniSC, you have entered into a written agreement with UniSC. After UniSC receives your acceptance, you will be sent confirmation of this written agreement by email.

If you are applying for a Student visa, you will be given a Confirmation of Enrolment (CoE). You will need the CoE for your Student visa application.

You will also receive your UniSC network username and password, so you can access the UniSC network and enrol in your courses online.

* Payment arrangements may be different for those students whose tuition fees are paid by their home institution or as a scholarship.

Packaged program students

The following information is for students who have been made a package of offers, eg you will be completing a UniSC English language or pathway program before progressing into a UniSC undergraduate or postgraduate degree.

If you have been made a packaged offer, you will receive a letter of offer detailing each program you will be completing at UniSC. Your offer will also outline what you need to do in order to progress to the next program within the package.

To accept your packaged letter of offer, follow the steps in the 'How to accept your offer' section of your letter of offer.

Once the required payment has been received you will be given Confirmations of Enrolment (CoEs) for each program if you are applying for a Student visa. You will need to provide all CoEs as part of your Student visa application. This will ensure that your Student visa is granted for the correct duration of your packaged program.

Overseas Student Health Cover (OSHC)

OSHC is health insurance to assist international students meet the costs of medical and hospital care that they may need while in Australia.

The Department of Home Affairs (DOHA) requires all students, who are studying in Australia on a Student visa, to maintain OSHC for the duration of that visa.* Health insurance cover is also required for all family members residing in Australia on a dependent Student visa.

If you indicated in your application that you would like us to arrange your OSHC, a quote is included in your letter of offer. The cost of your cover will depend on the type of cover and the duration of your studies.

The quote is for a Comprehensive OSHC policy with our preferred provider Medibank.

If you accept your offer, and make payment for OSHC, UniSC will arrange your policy. The details of your policy will be included in your Confirmation of Enrolment document used to apply for your Student visa. If UniSC does not organise OSHC cover for you, you will be required to show your cover to DOHA at the time of submitting your Student visa application.

You are individually responsible for ensuring your OSHC is current at all times and renewed as required. If your OSHC lapses, you are responsible for paying any medical costs incurred by you or your dependants.

Non-compliance with the requirement for visa-length cover is a breach of Student visa conditions. The validity of the Student visa may be at risk if OSHC is not maintained in accord with this condition.

OSHC is the minimum cover required by the Australian Government, however you may like to consider additional health and travel insurance at your own expense.

For more information about OSHC provided by Medibank, visit medibank.com.au/overseas-health-insurance/oshc/comprehensive-oshc



Health cover and travel insurance for non-student visa holders

If you are arriving in Australia on a non-Student visa (such as the 417 Working Holiday visa), you are not eligible for OSHC.

Please refer to a travel agent or search online to find suitable health and/or travel insurance to meet your personal needs.

* Belgian, Norwegian and some Swedish students are not required to purchase OSHC as part of their visa requirements and will be covered under their country's Reciprocal Health Care Agreement (RHCA) with Australia.

Organising your visa

The Department of Home Affairs (DOHA) requires each person, who intends to study in Australia, to hold a valid visa with study rights.

Most students require a Student visa to study in Australia. If you intend to study in a program that is longer than three months (12 weeks), you will normally need a Student visa.

Some students may be eligible for a Working Holiday visa, which will allow study for a maximum of one semester.

For further information regarding visa options and the visa application process, please refer to the DOHA website, homeaffairs.gov.au



Working Holiday visa

There are two sub-classes of Working Holiday (WH) visas and they are only available to applicants from certain countries.

If you are granted a WH visa, you can study at UniSC for up to four months (the equivalent of one semester).

For information about the WH visa, visit homeaffairs.gov.au

Student visa conditions

It is important that you are aware of any conditions attached to your Student visa. Some common conditions are outlined below. For a full explanation of the conditions, visit homeaffairs.gov.au

- **8105:** You cannot work more than 48 hours per fortnight when your program is in session (other than work which has been registered as a part of the course).
You can work for more than 48 hours per fortnight during scheduled breaks.
You cannot start paid work until you have started your program in Australia.
Students undertaking Higher Degree by Research programs have unlimited work rights.
- **8202:** You must maintain enrolment in a registered program that is the same level as, or at a higher level than, the registered program for which you were granted a visa.
You must maintain satisfactory course progress and complete your program within the standard duration.
- **8501:** You must maintain adequate arrangements for health insurance during your stay in Australia in the form of Overseas Student Health Cover (OSHC).
- **8516:** You must continue to satisfy the requirements for the granting of your Student visa. This means, for example, you must continue to have sufficient financial capacity to support your study and stay in Australia.
- **8517:** You must maintain adequate schooling arrangements for your school age dependants who joined you in Australia for more than three months as part of your Student visa application.
- **8533:** You must tell UniSC:
 - the address where you live in Australia within seven days of arriving in Australia;
 - if you change the address where you live within seven days of the change;
 - if you change education provider within seven days of receiving the electronic confirmation of enrolment certificate (CoE) or evidence of enrolment.

Choosing courses and enrolling

Once you have accepted your offer, paid your fees*, and received your login details, you can choose your courses and begin the enrolment process. Please read the following before enrolling in your courses.



Follow the **Steps to activate your offer and enrol** to complete your compulsory tasks, enrol in or view your courses and prepare for your studies.

- 1 Log on to USC Central using your username and password.
- 2 Complete the compulsory task items, if any appear.
- 3 Plan your study before you enrol.
- 4 Enrol in your courses.
- 5 Access your student email and Canvas.

It is a condition of your Student visa that you complete your program of study within the registered program duration (as registered on the Commonwealth Register of Institutions and Courses for Overseas Students—CRICOS).

Additionally, you cannot study more than one-third of your overall program online or by distance education and you must have at least one face-to-face course in each compulsory study period.

If you have been awarded credit transfer, you must complete your program by the end date as indicated on your Confirmation of Enrolment.

At UniSC, students enrol into their courses via the online system, USC Central. You will be advised via email when online enrolment is available for each teaching period.

* Payment arrangements may be different for those students whose tuition fees are paid by their home institution or as a scholarship.



1 Log on to USC Central

USC Central is the online system you use to manage your enrolment and personal details. This includes completing your compulsory task items, planning your study and timetable, enrolling in courses and/or viewing your enrolment, updating your personal details and viewing your financial details, grades and exam timetables.

2 Complete tasks

Log on to USC Central and complete the compulsory task items. Once you have completed them you will be able to enrol in your classes.

You can view a USC Central guide which explains how to complete these steps. usc.edu.au/usccentralguide

Updating your address details on USC Central

Check and update your Australian residential address and contact details on USC Central within a week of starting your studies. Any change of address must be notified within seven (7) days.

Your Australian residential address is your 'mailing address' in USC Central.

The address that you should record as your 'permanent address' in USC Central must be your overseas address. Your Australian address and phone number details must be kept current.

Failure to keep these details current constitutes a breach of Student visa condition 8533.

3 Plan your study

Degree program students

Planning your enrolment is an important start to your university life. It is an exciting time where you explore your options and plan your courses for your upcoming study periods.

To help choose your courses go to your program page and refer to the Program Structure and Study Sequences under the Program detail section. Select your location and starting semester to display your study sequence.

You must follow your program structure in order to successfully complete your program. For more information, visit usc.edu.au/programs

Your study sequence will show all courses you need to enrol in (core courses), when they are offered and which choices you have for any elective courses.

The standard full-time enrolment is four courses per study period. There may be instances where you cannot enrol into a full-time study load, eg if you have received credit for prior learning or course availability.

If you are unsure about what courses you should enrol in or have problems enrolling via USC Central, contact Student Central for advice:

Student Central
+61 7 5430 2890
studentcentral@usc.edu.au

Students with Credit Transfer

If you have been offered Credit Transfer, you will need to select your courses carefully to ensure you meet all program requirements and can graduate with your intended degree/major.

If you have not already been provided with a study sequence, you may need to speak to a Program Adviser at Student Central to help you choose your courses.

Study Abroad and Exchange students

As a Study Abroad or Exchange student, you will have received your course choice assessment from UniSC during the application process. These are the courses you have been approved to enrol into.

If you did not submit your course choices yet or you would like to be assessed for different courses, you will need to contact the International Office to submit your course choices for approval before online course enrolment.

If you need to transfer credits to your home institution for studies undertaken at UniSC, make sure your course choices are approved by your home institution, regardless of whether your choices appear on the UniSC 'pre-approved' or 'approval required' course lists.

Submission of your course choices to UniSC, and approval of your eligibility, does not constitute enrolment. You must enrol in your approved courses online via USC Central. For more information, visit usc.edu.au/studyabroad

Higher Degree by Research (HDR) students

Your enrolment in your HDR course/s is completed by Student Central based on the information provided in your letter of offer.

For more information, visit usc.edu.au/start

4 Enrol in your classes

Now that you have planned your study, you must enrol in your courses in USC Central.

You can enrol in courses for the full year, Study periods 1 and 2. This gives you the opportunity to plan your study well in advance.

If you enrol in your courses on time you have the advantage of selecting your class times earlier than those who don't.

Check the academic calendar for the timetable release date for each study period. Once the timetable has been released you can use the Timetable Planner to plan your class times.

You will be notified via email when class selection opens for the relevant study period and provided with instructions on how to select your class times.

You can find timetables at usc.edu.au/timetables or via USC Central.

Timetables are subject to change, so check them for changes before classes start.

Post-admission requirements

Some UniSC programs have post-admissions requirements, which are requirements you must meet before you can partake in certain parts of the program, such as placements.

Common post-admission requirements include:

- Holding a valid Blue Card (Working with Children Check) from QLD Government Blue Card Services throughout the duration of your program.
- Obtaining a National Criminal History check through the Australian Federal Police
- Complying with relevant vaccination requirements
- Being fit tested annually for an approved respirator

Refer to the program page of the program you will be studying at UniSC for any post-admission requirements you may need to meet.

usc.edu.au/programs



5 Access your student email and Canvas

Student email

Once you have accepted your offer, all University communication will be sent to your student email.

It is important to check your student email regularly to stay informed.

Your course lecturers and tutors will contact you via your student email and important student notifications will be sent here.

You can access your email via the Student Portal or via Microsoft Outlook.

studentportal.usc.edu.au

Canvas

After you have received your UniSC network login details you will have access to Canvas, the learning management system you will use to access:

- online study materials for lectures and tutorials
- student announcements and notifications
- information resources including library catalogue and databases

You can attend the Canvas workshops held during Orientation to understand how it works.

Your course materials will be made available by your course coordinator the week before classes commence.

NOTE: Your password is confidential and should not be disclosed to anyone.

Disclosure of your password to others may result in a breach of security and will not be considered a valid excuse for any unintended changes to your record.



Arriving in Australia

Your indicative Orientation and class start dates are outlined in your letter of offer. Before you make your travel and accommodation arrangements, you should refer to the academic calendar for exact dates. usc.edu.au/calendars

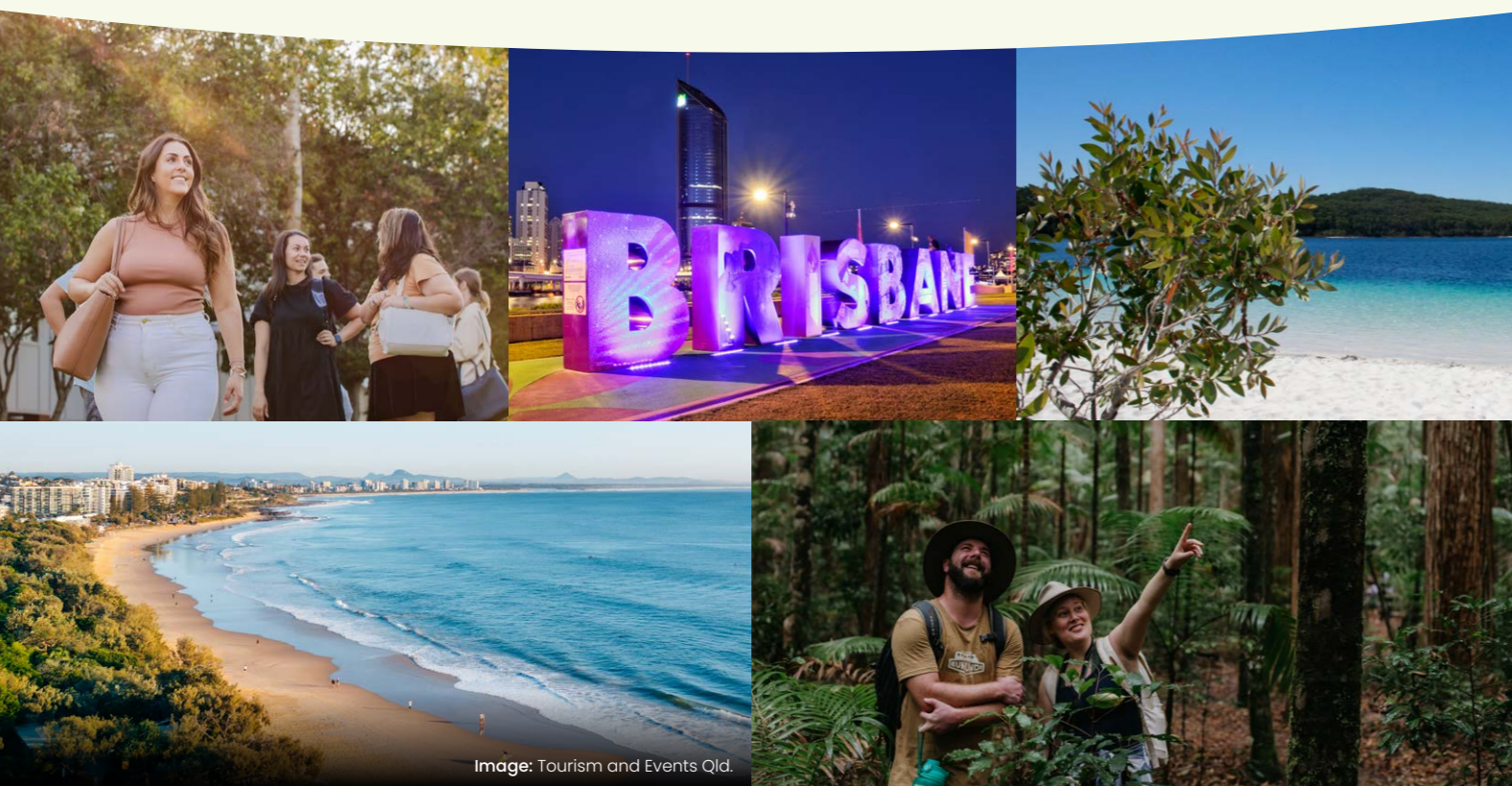


Image: Tourism and Events Qld.

What you cannot bring into Australia

To protect Australia's unique environment and important agriculture industries, strict quarantine laws are in place at Australian international airports and mail centres.

On the aircraft, before your arrival in Australia, you will be given an Incoming Passenger Card to fill in. You must tick YES to declare if you are carrying any food, plant material or animal products.

TIP ➔ If you are unsure about items you are carrying, declare them anyway.

In many cases, items will be returned to you after inspection. However, any item that has a pest or disease risk will be withheld.

Depending on the risk, some items can be treated to make them safe (fees apply) while other risk items may be seized and destroyed.

All luggage is screened or x-rayed on arrival in Australia. If you fail to declare any quarantine items or make a false declaration, you may be given an infringement notice for up to A\$6,260.

Your visa may also be cancelled and, if so, you may be refused entry into Australia and held in immigration detention pending removal from Australia.

If you are unsure of an item, always declare it, or don't bring it to Australia at all.

All international mail sent to Australia is also screened. The Australian Quarantine and Inspection Service will remove high-risk items from parcels.

Please inform family and friends of what cannot be sent to Australia and ask them to declare all items on the postal declaration label.

TIP ➔ A variety of your favourite foods is available in all of Australia's major cities. These foods had to pass strict quarantine conditions before they were allowed into Australia.

The Department of Agriculture, Water and the Environment have produced a comprehensive guide for international students to help them identify what is isn't a biosecurity risk. For more information, visit awe.gov.au/studying

Living in Australia

Course-related costs

As a general guide, allow A\$400 per semester for new textbooks. Second-hand textbooks are often available at reduced prices.

Some courses require additional equipment such as lab coats or uniforms, and regular expenses like printing costs.

Some professional programs (eg education, health) may require memberships, certifications, licences and/or immunisations. Check your program page for details.

Design program students should allow additional money for materials and printing costs.

English language program students are loaned textbooks for the duration of their course.

Living costs

The Department of Home Affairs (DOHA) estimates you will need approximately A\$29,710 per year for your stay in Australia.

You will need to allow for additional living expenses if bringing your family with you. DOHA advises you should allow an additional A\$10,394 per year for a spouse or de facto partner and \$4,449 per year for each dependent child.

To assist you with estimating your living costs, Study Australia offers a cost of living calculator: costofliving.studyaustralia.gov.au

For more information including an overview of common expenses for international students, visit usc.edu.au/living-costs or studyaustralia.gov.au

Students with school-aged dependants

If you have school-aged dependants (children) accompanying you to Australia, you will be required to pay full fees if your dependants are enrolled in either a government or non-government school.

You should allow at least A\$13,502 per year for the cost of each child's schooling.

Costs vary between schools and you are responsible for finding out how much your child's schooling will cost.

For more information, visit education.qld.gov.au

Image: Tourism and Events Qld.



Medical services

Medical centres

If you are unwell, you should make an appointment with a general practitioner (GP). A GP is a doctor, usually located within a medical centre.

Most medical centres are generally open from 8am to 5pm Monday to Friday, and from 8am to 12noon on Saturdays. Hours vary between centres.

Some medical centres operate seven days a week and also offer an after-hours service (24 hours, seven days).

Consultation fees vary between medical centres, and you will usually have to pay at the time of treatment. When making an appointment, always state the health cover you have. Some doctors charge a gap fee. This is the fee between what your insurer may cover and the consultation fee the doctor charges. You can confirm any gap fees with the doctor when making an appointment.

You can claim part of this fee back from your Overseas Student Health Cover (OSHC) or other insurance provider.

If you have an OSHC policy with Medibank, you get access to the network of doctors and medical centres all around Australia. Using their network of providers makes it easier for you to claim when you visit a doctor. All you need to do is provide your valid membership card and the provider will bill Medibank directly for the covered amount of your bill.

Telephone numbers and addresses of medical centres and hospitals can also be found online.

Hospitals

If you become unwell in Australia, you should visit a medical centre.

In an emergency, or after hours, you should visit a hospital Emergency/Outpatient department.

For life-threatening situations, use a phone to call 000. For more information about emergency call services, visit triplezero.gov.au

Dental clinics

Dental fees are not covered by OSHC. You must pay the full cost of any dental services you receive.

Fees start at approximately A\$80. Individual practices provide quotes or estimates for treatment.

Pre-existing conditions and OSHC — treatment and medication

OSHC will cover you for immediate treatment of an illness or ailment, unless it is for a pre-existing condition.

There is usually a 12-month waiting period before prescription medication and medical treatment can be covered for preexisting conditions.

The Comprehensive OSHC policy provided by Medibank is above the minimum requirement and will remove waiting periods for some services.

OSHC provides limited cover for prescription medicines for conditions that are not pre-existing.

Students must pay the part payment amount for each prescription item and may receive a refund for the difference up to the maximum allowable amount per prescription item.

For full policy details, check with your OSHC provider.

Bringing prescription medication into Australia

If you need prescription medication for an existing condition, you should investigate whether you can have your prescription filled in Australia, or whether you need to bring a supply with you.

Many medications are available in Australia and you can have prescriptions for those medications filled at a chemist (pharmacy).

If your medication is available in Australia, you should make a list of the generic names of your medication, so an Australian doctor can write you a prescription.

If your medication is not available in Australia, and you need to bring prescription drugs with you, please refer to the Therapeutics Goods Administration (TGA).

For information on medications entering Australia, visit tga.gov.au

You may bring a three-month supply (at the maximum dose recommended by the manufacturer) of TGA-unapproved medicines into Australia in any one importation, provided that:

- The goods are for use in the treatment of you (the importer) or your immediate family.
- You do not supply (sell or give) the medicine to any other person.
- The goods do not contain a controlled substance.

- The goods are not injections that contain material of human or animal origin (except insulin).
- The total quantity of the medicine imported within a 12-month period does not exceed 15 months' supply of the drug (at the maximum dose recommended by the manufacturer).
- A prescription from a registered medical practitioner is held for the goods.

If you need a larger quantity than specified above (more than three months) your doctor will need to apply to the Special Access Scheme for an exemption under Section 19 of the Therapeutic Goods Act 1989.

For more information, visit

tga.gov.au/form/special-access-scheme

In some cases, medication can be mailed to Australia if approved by the TGA. To find out if your prescription or medication is approved, contact the TGA.

For contact details and more information, visit

tga.gov.au

Driving

To drive in Australia, you must hold a valid driver's licence.

If you have a current Driver Licence from your home country, and it is in English, you are permitted to drive in Australia.

If your driver's licence is in a language other than English, you may apply to the Department of Home Affairs (DOHA) to have it translated.

You must carry your driver's licence (with translation if applicable) and passport with you when driving.

If you do not hold a driver's licence in your home country, and you are going to stay in Australia for more than six months, you can apply for a Queensland driver's licence.

You will need to take a written and a practical test. If you are under 25 years of age, you will also need to have completed 100 hours of supervised driving training, prior to attempting your practical test.

For more information, visit tmr.qld.gov.au

Voltage

Electricity in Australia is 220–240 volts.

If your home country's electricity network operates on different voltage, you will need to use a voltage converter for any electrical devices that you want to bring to Australia.

Australia uses a three-pin power plug. If you bring any devices from home, you will need to use an adaptor. If you buy a converter or adaptor before you arrive, make sure it is suitable for Australian power sockets.



Postal services

Australia Post operates Australia's postal service.

Australia Post branches offer postal services, bill payment, and retail sales of postal and gift products. Australia Post also offers services online at auspost.com.au

Options are available to send large or heavy items from Australia to your home country.

Australia has strict regulations on the import and export of goods and you may need to pay fees to have certain parcels released from Australian customs.

Check which products cannot be sent to and from Australia, or which will attract fees, by visiting agriculture.gov.au/biosecurity

Legal issues

The Australian legal system is different from that of your home country.

Under Queensland and Australian law, the legal age of adulthood is 18 years of age.

As part of your Orientation, you will receive information regarding legal issues in Australia.

Legal advice is available to international students through Legal Aid. This aid is free of charge but is subject to eligibility conditions.

For more information, visit legalaid.qld.gov.au

Residential Tenancies Authority

Before signing a lease or rental agreement, make sure you are aware of your rights and obligations as a tenant by reviewing information provided by the Residential Tenancies Authority (RTA).

The RTA provides information on bond management, dispute resolution and tenancy agreements.

For more information, visit rta.qld.gov.au

Religion

Australian law ensures freedom of religion and many religions are practiced in Australia.

Service times and contact details for many local churches and places of worship appear in the 'Classifieds' section of the Saturday edition of local newspapers.

Interpreter service

A 24-hour, seven-day, telephone interpreting service operates throughout Australia to assist with communicating in English. Contact the Translating and Interpreting Service (TIS) by phoning 131 450 from anywhere in Australia (charges apply). For more information, visit tisnational.gov.au

Currency

Australia uses a decimal currency system with 100 cents to the dollar.

The currency comprises notes and coins and the basic unit of currency is the Australian dollar.

Australian notes are plastic and different values are represented in different colours and sizes. Notes come in values of \$5, \$10, \$20, \$50 and \$100.

Coins come in values of 5c, 10c, 20c, 50c (c = cents), \$1, and \$2. Coins less than \$1 in value are silver, the others are gold.

Throughout this guide, Australian dollars are denoted by A\$.



Banking

Opening an Australian bank account allows you easy access to your money.

The financial institution you choose will generally allow you to operate your bank account from almost anywhere in Australia.

Banks in Australia set charges for some transactions, have varying rules for opening and operating accounts, and offer various benefits in terms of fee structure. Some offer 'fee free' accounts for students, on presentation of your UniSC student ID card.

To open a bank account in Australia, you will need to bring your passport and two other forms of identification, such as a national identity card, driver's licence, student ID or a card from another bank. Remember to also bring your UniSC student ID card, to qualify for any student accounts.

Some Australian banks also allow you to open a bank account from overseas, before you travel to Australia.

For more information about banking services, contact your preferred Australian bank.

Accessing your funds

You may find it convenient to access funds from your home bank account while in Australia. You can do this quite easily by using a debit card displaying the Cirrus or Visa symbol. This will give you immediate access to your funds worldwide, in local currency, from ATMs displaying the same symbol.

Contact your bank to connect to these networks and find out what fees and charges apply when you access your money.

Shopping

Most grocery and retail stores are open seven days a week from 9am to 5pm weekdays, and from 10am to 4pm at weekends. Some stores offer late-night shopping until 9pm on Thursdays.

Most stores accept cash, credit cards and debit (savings) cards.

Australia has one of the most concentrated grocery markets in the world. Woolworths and Coles account for almost 70 percent of supermarket sales. They stock fresh fruit, vegetables, meat, dairy, poultry, general food and household items. Aldi and IGA are also widely spread through Australia.

Some of the biggest retail stores in Australia are Myer, David Jones, BigW, Kmart, Target and JB Hi-Fi.

Attending Orientation

We look forward to welcoming you to UniSC in person



Orientation at UniSC is held during the week before the start of each semester on campus and is a mixture of workshops to help you settle in to your studies and fun activities where you can meet other students and explore the local area. Separate orientations are held at other campuses during Orientation Week, and these dates are available closer to the time.

If you are commencing your program in a Session or are enrolled in a Higher Degree by Research program, you will be contacted about your Orientation by the relevant School or the Graduate Research School.

During Orientation, you can familiarise yourself with the campus, student support services, academic expectations and requirements.

Each UniSC location has its own Orientation which often includes live music, entertainment, information about UniSC's sporting teams and interest groups and other activities.

These events are a great way to make new friends and begin your Australian study experience.

The academic support services include workshops on topics such as assignment writing, library tutorials and new semester study essentials.

For details of the Orientation schedule including activities, times and dates, visit usc.edu.au/orientation

Orientation task

All international students have to complete the International Orientation task via USC Central once it becomes available on your student account.

This task includes important information about your stay and studies in Australia.

Connect Week

Each semester in Week 2, UniSC hosts Connect Week where you can attend a range of events, including the popular "Welcome to Australia" event.

More information about these events each semester can be found on the Student Portal.





Student support services

As a UniSC student, you are encouraged to access the services available to you on campus.

Whether you need information about your studies, extracurricular activities, or personal issues, you will find support at UniSC. Student support services may vary across UniSC campuses.

Check individual study locations for more information in this guide and at usc.edu.au/studylocations

For more information on all student support services, visit usc.edu.au/studentsupport

Student Central

Student Central offices are located at each UniSC campus and are your first point of contact for anything student related.

Staff at Student Central can offer help and advice about most facilities, services and procedures or put you in touch with the relevant service.

Services includes:

- enrolment advice
- program advice
- student finance
- progression
- exams

For more information, visit usc.edu.au/studentcentral

Student Success

The Student Success team is here to talk with you about your studies and connect you with information and support services.

They offer a wide range of resources to help you feel prepared for your studies, balancing uni and life, dealing with unexpected circumstances and options if you fail a course.

Services include:

- academic skills resources and workshops
- learning adviser appointments
- drop-in academic advice

For more information, visit usc.edu.au/studentsupport

Student Wellbeing

Studying in a new country can be challenging. Student Wellbeing staff are ready to help during your study. They can provide timely assistance with your wellbeing concerns affecting your studies and provide a range of support and services.

Services includes:

- Counselling service
- AccessAbility services (disability support)
- Equal Opportunity (EO) Online for Students
- Equity Information
- Health and wellbeing
- LGBTIQ Ally Network
- Wellbeing workshops

For more information, visit usc.edu.au/health-and-wellbeing

International Office

The International Office is here to assist you with your application to UniSC and help you through the application process, provide assistance relating to:

- obtaining credit transfer towards your studies
- your Student visa and conditions
- Overseas Student Health Cover (OSHC)
- any future studies at UniSC

For more information, visit usc.edu.au/international

Careers and Employability

Careers and Employability offer a range of ways for students to connect with industry, access professional development, enhance employability and support research.

Services for students include:

- individual career counselling, guidance and planning
- assistance with resumes and job application processes
- workshops and events

For more information, visit usc.edu.au/careers

Tenancy and welfare services

The Welfare and Advocacy Officer at the Student Guild can assist you to understand your rights and responsibilities under the *Residential Tenancies and Rooming Accommodation Act 2008*. They can also provide information, resources, advice and referral in areas such as:

- Residential Tenancies Authority (RTA) legislation – the RTA is the state government statutory body for Queensland's residential rental sector
- Budgeting
- Dispute resolution
- Referral to free legal services
- Referral to Emergency and/or crisis accommodation only

To book an appointment with the Welfare and Advocacy Officer:

Email: welfarestudentguild@usc.edu.au

Tel: 07 5456 3742.

IT services

A range of Information Technology (IT) services are available to you. IT support is available on campus, by telephone or via self service.

For more information, visit usc.edu.au/technologyandITsupport

Student IT Help Desk

The Student IT Help Desk provides students with assistance to access the UniSC network and troubleshoot problems with logins, passwords, and access to UniSC information technology systems including email and WIFI.

Computers on campus

Computers are available 24 hours a day unless otherwise specified and scheduled classes always have priority access. You will need your student card to access the room.

Visit 'Find A PC' to locate an available PC on campus or for locations, visit usc.edu.au/maps

UniSC account

Use this account to access UniSC systems including student email, USC Central, Canvas, wireless internet and computers on campus.

If you have accepted your offer and not yet received your username and password, please contact the International Office.



WiFi networks

UniSC students generally use the University's eduroam network to access the internet, USC Central, Canvas and student email.

This means that when you are on campus this will allow you to connect to the wireless eduroam network using your UniSC credentials.

UniSC email

Every UniSC student is provided a University email account provided by the Microsoft Office 365 for Education system.

You can access your email and calendar by logging into the Student Portal or via Microsoft Outlook.

studentportal.usc.edu.au/

All University communications will be sent to your student email. It is important to check your student email regularly to stay informed. Electronic communication is considered official communication from UniSC.

USC Central

This is one of the most important online services you need to become familiar with. USC Central is the online system you use to manage your enrolment and personal details.

This includes:

- Completing task items
- Planning your timetable
- Enrolling in courses and classes
- Updating your personal details
- Viewing your financial details
- Viewing grades
- Generating an unofficial academic transcript
- Viewing your class and exam timetables

Canvas

Your one-stop-shop for study materials. Find course outlines, study resources, access student forums, and submit assessments. Through Canvas you can also access the Train Station which connects you to free online training tools (including Lynda.com) covering a range of topics.



Transport

Unisc Express shuttle

The UniSC Express shuttle service connects some UniSC study locations and major transport hubs. It's a FREE service for all students and staff who hold a current University identification card.

The shuttle service operates during teaching weeks from Monday to Friday in Semester 1 and 2 only and does not run during University breaks, including the Easter intra-semester break, the study break, Orientation week and exam period or on public holidays.

For more information and timetables visit usc.edu.au/express

Translink 'Go Card'

TransLink's 'Go Card' provides a quick and easy way for you to travel on public transport. Simply touch your Go Card on at the beginning and touch off at the end of your journey across all TransLink bus, train and ferry services. The correct fare is automatically deducted from your balance.

When you use a Go Card, fares are approximately 30 percent cheaper than the cost of a single paper ticket. To be eligible for a concession Go Card with student fares, you will need to be an award student and carry your UniSC full-time student identification card when travelling on any TransLink services.

Go Cards can be purchased from train stations, by telephone on 13 12 30, from the TransLink website and many other locations around Queensland.

You will find more information about Go Cards at translink.com.au

Locations

UniSC offers flexible learning options at a network of teaching locations between Brisbane and the Fraser Coast. Many programs include courses that can be completed at any campus. This guide can help you decide if your preferred location is the right choice for you.

For more information on all study locations, visit usc.edu.au/studylocations



© Point Cartwright, Mooloolaba



UniSC Sunshine Coast

📍 90 Sippy Downs Drive, Sippy Downs QLD
usc.edu.au/maps

UniSC Sunshine Coast is located in the heart of the Sunshine Coast at Sippy Downs and is home to some of the most innovative learning and visualisation facilities in Australia.

Campus facilities include a A\$37m Engineering Learning Hub with 3D CAVE2™ visualisation studio, simulated nursing and paramedic labs, specialised computer, science, manufacturing and design labs, nationally accredited sport science labs, and a range of interactive digital learning spaces.

Students have access to the award-winning UniSC Library and Art Gallery, modern teaching and study spaces, a community garden, and a space for multi-faith prayer and quiet reflection.

UniSC Sunshine Coast is a premier sporting destination with nationally-accredited facilities. The High-performance sport precinct includes the aquatic centre with a 50-metre Olympic standard swimming pool, a six-lane 25-metre pool, cold immersion and warm plunge pool and aquatic recovery equipment, athletics track, playing fields, courts, fully equipped gym and the 3,000-seat indoor UniSC Stadium, which is home to the Sunshine Coast Lightning netball team.

Getting around the Sunshine Coast

The UniSC Transit Centre includes a three-platform bus interchange and provides services to various Sunshine Coast locations. It also connects with trains to Brisbane and other inland towns. Bus services operate to and from UniSC Sunshine Coast seven days a week. However, services are limited at weekends and on public holidays.

For bus timetables and to plan your journey, visit translink.com.au

The average cost of a one-way, full-time student award, on-peak bus fare from UniSC to Maroochydore is approximately A\$2.60 (paper ticket concession) or A\$1.78 ('Go Card' concession).

A free shuttle service is offered for all UniSC students between the UniSC Sunshine Coast campus and Landsborough train station. For more information and timetables visit usc.edu.au/express

Travelling times on the Sunshine Coast

Bus	Route	Time
	Campus to Kawana	25 minutes
	Campus to Mooloolaba	15 minutes
	Campus to Maroochydore or Nambour	30 minutes
	Campus to Landsborough Railway Station	20 minutes
	Maroochydore to Noosa or Caloundra	55 minutes
	Campus to Brisbane (bus and train link)	2 hours, 30 minutes
Car		
	Campus to Mooloolaba	10 minutes
	Campus to Kawana	15 minutes
	Campus to Maroochydore, Caloundra or Nambour	20 minutes
	Campus to Noosa	40 minutes
	Campus to Brisbane	1 hour
Train		
	Campus to Brisbane (bus and train link)	2 hours, 30 minutes
	Landsborough to Brisbane	1 hour, 30 minutes
	Nambour to Brisbane	1 hour, 45 minutes
Bicycle		
	Bicycle track between UniSC and Mooloolaba	30 minutes

Weather

The Sunshine Coast climate suits the outdoor lifestyle and leisure activities enjoyed here. While the area does live up to its name, the Sunshine Coast also has its share of rain and the Australian summer months are usually the wettest. If you are coming in winter, you should bring warm clothes.

Sunshine Coast weather and seasons

-  **Summer:** December to February, 18–30°C, hot, humid and stormy
-  **Autumn:** March to May, 11–27°C, becoming cooler
-  **Winter:** June to August, 7–22°C, colder temperatures
-  **Spring:** September to November, 10–27°C, becoming warmer

Arranging accommodation and airport transfers

It is essential for international students to organise either short or long-term accommodation before arriving on the Sunshine Coast so you know you have somewhere to stay when you get here. There are a variety of accommodation options close to campus whether you want to live in a student village, share a house or find a place of your own.



Privately owned accommodation providers

If you're studying at our main UniSC Sunshine Coast campus, you can choose between two private accommodation providers – UniCentral and Varsity Apartments.

UniCentral
 Tel: +61 7 5373 0000
unicentral.net.au

Varsity Apartments*
 Tel: +61 7 5450 2000
varsityapartments.com.au

Rental accommodation

UniSC campuses are close to suburbs where off-campus accommodation is also an option. If you'd like to rent your own house, apartment or townhouse, real estate agents and private providers advertise on the following websites:

- flatmates.com
- realestate.com.au
- domain.com.au
- easyroommate.com.au

If you're looking to live in Brisbane City and commute to some of our campus locations, accommodation providers such as Student One, UniLodge and Iglu accommodation are also popular options.

Study Queensland also provides comprehensive accommodation information:
studyqueensland.qld.gov.au/live/accommodation

* Varsity is a member of the Student Accommodation Association (SAA) and one of the few student accommodation complexes in Australia to meet the criteria of the National Property Accredited Scheme (NPAS) for students.

Please note: The University of the Sunshine Coast does not provide accommodation or screen information, nor does it act as an agent in the provision of accommodation information. It is your responsibility to determine whether the housing arrangements are suitable. Any person utilising third party information, such as the privately owned accommodation provider information, is advised to read UniSC's Disclaimer. usc.edu.au/disclaimer

Homestay accommodation

Living with an Australian family gives you the opportunity to experience Australian culture and speak English on a daily basis.

You can search for homestay providers and listings online. One private, standards-based homestay organisation is the Australian Homestay Network (AHN), which gives international students the opportunity to be hosted by a specially trained AHN homestay host for their introduction to accommodation and living in Australia.

For details, costs and applications, visit homestaynetwork.org

Airport transfers

There are frequent international flights direct to Brisbane International Airport, which is the closest international airport to the Sunshine Coast.

You can fly direct to Brisbane, or fly into Sydney or Melbourne, and take a connecting flight to Brisbane or the Sunshine Coast.

There are daily domestic flights from Sydney and Melbourne to Maroochydore (Sunshine Coast) Airport, which is only a 20-minute drive from the UniSC campus. You can book airport transfers online at con-x-ion.com



Campus services and facilities

Student Central

Ground floor, Building C
 Email: studentcentral@usc.edu.au
 Tel: +61 7 5430 2890
usc.edu.au/studentcentral

Student Wellbeing

Ground floor, Building E
 Email: studentwellbeing@usc.edu.au
 Tel: +61 7 5430 1226
usc.edu.au/health-and-wellbeing

Student IT Help Desk

First floor, Library
 Tel: +61 7 5459 4455
usc.edu.au/technologyandITsupport

Computers on campus

Computers are available 24 hours a day unless otherwise specified and scheduled classes always have priority access.

You will need your student card to access the room. Quick access computers are available in the Library's Information Commons and Building T, Level 1. These computers are only for checking email, accessing files and printing study materials.

Visit 'Find A PC' to locate an available PC on this campus or for locations, visit usc.edu.au/maps

Printing, copying and scanning

You can print and photocopy at minimal costs using your UniSC student ID card. Scanning is free. The library's Print and Photocopying Help Desk can assist you.

For more information and printer locations, visit usc.edu.au/student-printing

Library

UniSC Sunshine Coast library offers traditional library collections, including books, DVDs and maps as well as online resources. It also provides computer access.

The library's Print and Photocopying Help Desk offers binding, laminating, photocopying, transparencies and network printing at minimal costs. Scanning is free.

Your student ID card is also your library card. You must present it to borrow items.

Many library services, including access to journals, online tutorials, and electronic databases, are also available online at usc.edu.au/library

Email: LibraryHelp@usc.edu.au
 Tel: +61 7 5430 2804

Student Guild

The Student Guild at UniSC Sunshine Coast provides a range of support and social services like recreational activities and events, clubs and societies, student advocacy, confidential Welfare service, food bank and community kitchen, free legal referrals.

The Guild is governed by a committee of elected students working in tandem with a team of professional staff to make student life at UniSC as enjoyable as possible.

To find out more, visit uscstudentguild.org.au



Art Gallery

The UniSC Gallery hosts a range of exhibitions throughout the year, including work by nationally and internationally renowned artists, local artists and students.

The Gallery also presents talks, workshops and public events. It is open Monday to Friday from 10am to 4pm and Saturday from 10am to 1pm. Entry is free.

For exhibition details, visit usc.edu.au/gallery

Childcare

There are many childcare services in University's surrounding areas and suburbs. Use the Find Child Care Tool to find a child care service in your local area.

Visit startingblocks.gov.au

The AEIOU Foundation runs a childcare facility on UniSC's Sunshine Coast campus and offers traditional childcare for all children as well as best practice care for children with autism.

For more information, or to enrol, call +61 7 5452 0300 or visit aeiou.org.au

Food services

There are four kitchens available for student use: one on Level 1 of Building E (at the top of the main staircase), one on Level 2 of Building H2 (in the main study space), one in Building C (outside LT7 and Cafe C) and one inside the Brasserie.

All kitchens have microwaves, with Building E and Building H2 also having refrigerators. The Brasserie has a hot water tap as well.

Brasserie and cafés

UniSC's Brasserie and a variety of cafés serve a selection of meals, snacks and refreshments.

Off-campus options

Chancellor Park Shopping Centre, only a short walk from UniSC, has take-away food stores, a bakery and a small convenience store.

Chancellor Park Marketplace, only a 20-minute walk from UniSC, has takeaway food stores, cafés, a bakery and a large supermarket.

Across the road from the Resources Building (Building R) on Sippy Downs Drive there are several food stores, a bakery café and a large supermarket.

Chancellor Village Tavern, also a 20-minute walk from UniSC, offers bistro meals.

Automatic Teller Machines (ATMs)

On-campus ATMs are located on the ground floor of Building B and the Brasserie, Building I.

Bicycle facilities

The UniSC Sunshine Coast campus has a selection of bicycle racks and end-of-trip facilities. The UniSC Bike Hub is a dedicated end-of-trip facility for use by students and staff. Located adjacent to carpark 5, 150m from Buildings C and D, the Bike Hub offers parking and lockers for bikes, gear lockers, showers and toilet facilities.

Bike repair stations

Keep your bike moving at one of our self service Bicycle Repair Stations. Bicycle Repair Stations are located at the Bike Hub (adjacent to carpark 5), the Transit Centre Bike Station, the Innovation Centre and Sports Stadium Bike Hub.

Each station is equipped with:

- bike pump
- bike tyre levers
- a wheel nut spanner bike tool
- a plain screwdriver
- a shifting spanner
- a multi-purpose bike tool.

These secure facilities are monitored by CCTV cameras and provide parking and locking facilities for bicycles. Access is by swipe card and is available to all staff and students with a current University identification card.

UniSC bike clinics

UniSC holds free bike clinics at the Sippy Downs campus each semester for students and staff to learn how to maintain and repair their bikes. The clinics are held in conjunction with Connect Week, Market Day and Ride2UniSC Day.

For more information visit usc.edu.au/cycling

Parking

UniSC Sunshine Coast is a regulated parking area Monday–Friday, 8am–6pm all year (excluding public holidays). All other times are free. Regulated parking applies to all UniSC students, staff and visitors, without exception.

Digital displays are located at the campus entrance to identify where empty spaces are located.

Payment options are available to UniSC students and staff, campus tenants and visitors:

- Six-month and 12-month parking ePermits are available to purchase online via vPermit.
- Daily eTickets are available at Ticketless Parking Meters (pay by coins, Mastercard or Visa) around the campus and online via vPermit.

Motorcycles must park in designated motorcycle parking bays, with a valid ePermit or eTicket. Infringement notices may be issued for motorcycles parked in general vehicle bays.

Paid parking at UniSC is a ticketless system. Payment is cross-checked against your vehicle's registration number when on campus, so there is no need to print or display a ticket or permit.

Sunshine Coast Council parking inspectors enforce parking regulations on campus and in the surrounding streets, and issue infringement notices.

Free parking is available at car park 15 (P15), off Claymore Road (refer to the parking map). P15 has capacity for 565 cars and is less than a kilometre from the centre of campus—approximately a 15-minute walk.

The Claymore Road car park is linked to campus by lit pathways and is equipped with Emergency Call Points, as are all car parks on campus. You can keep your bike overnight in the secure bike facilities within P15 to make your commute to the main campus even quicker.

Campus security

Personal safety on campus is a priority at UniSC.

The SafeUniSC team is available 24 hours a day, 7 days a week for emergency response, first aid, safety escorts and personal safety. All SafeUniSC officers are qualified Senior First Aid Officers.

You should carry your student ID card with you at all times on campus. Security may ask you to present your ID, to prove you are a current student. SafeUniSC officers can escort you to student accommodation (Varsity Apartments or UniCentral), your car or the UniSC bus stop, if required.

SafeUniSC operations centre is located in Building J, Ground floor to allow immediate communication with SafeUniSC Officers.

UniSC uses SafeZone to manage emergency response and communications during incidents on campus. The app connects you with the SafeUniSC team or emergency services.

To download the app, visit safezoneapp.com

In the event of an emergency dial emergency services on **000** (or **0-000**).

To contact Security

Tel: +61 7 5430 1168 (external or mobile telephone) or extension 1168 (internal campus telephone)



Sporting facilities and clubs

UniSC Sport

UniSC Sport provides first-class facilities, programs and services for students.

Sport facilities

- an Olympic-standard 50m 10-lane heated swimming pool, a six-lane 25-metre pool, cold immersion and warm plunge pool and aquatic recovery equipment
- a gym with modern equipment and classes including yoga, Zumba and boxfit
- a \$10 million indoor sports stadium, which accommodates more than 2,000 spectators and has multiple sports fields including netball, basketball, volleyball, badminton and futsal
- an international-standard athletics track, plus athletics equipment for hire
- multipurpose playing fields, for rugby, soccer and AFL.

Social sport

If you don't want to join a sports team, but enjoy playing team sports, UniSC sport organises social sport programs.

You can turn up and get involved in sports like futsal, volleyball, ultimate frisbee, handball, basketball or soccer.

A range of Sunshine Coast sporting groups also use UniSC facilities for training and fixtures, which could include athletics, basketball, rugby, volleyball, futsal, netball, wheelchair basketball and roller derby.

usc.edu.au/sport/social-sport

Intervarsity sport

Intervarsity sport events provide a great opportunity to represent your university and meet people from all over Australia.

UniSC Sport selects individuals and teams to represent UniSC throughout the various national events, run by Unisport Australia. Teams representing the University compete as the UniSC Spartans. To be eligible you must be an enrolled student.

usc.edu.au/intervarsity-sport

Social clubs

There are a range of social clubs and events run by students at UniSC. Check out what's on offer on the Student Guild website under "Affiliated Clubs & Societies".

uscstudentguild.org.au/clubs

Thompson Institute

12 Innovation Parkway, Birtinya Qld
usc.edu.au/maps



The Thompson Institute is located in Birtinya approximately 15-minute drive by car from the main UniSC Sunshine Coast campus.

The Institute is developing into a world class facility for mental health and neurological research, teaching and clinical services. The institute will enable UniSC to make a major contribution to the understanding, diagnosis and treatment of disorders of the brain and mind and be at the forefront of vital research for the Sunshine Coast in the areas of aging, dementia and mental health issues relating to youth and adolescents.

Please note: Students studying either the Master of Psychology (Clinical) or Master of Professional Psychology will be based at this location.

International students from other programs cannot study at this location.

Accommodation

The Institute is close to suburbs and towns where you can find off campus accommodation.

If you would like to rent your own house, apartment, townhouse or flat, real estate agents and private providers advertise on the following websites:

- flatmates.com
- domain.com.au
- realestate.com.au
- easyroommate.com.au

Study Queensland also provides comprehensive accommodation information:
studyqueensland.qld.gov.au/live/accommodation

You may also consider living at one of the private accommodation providers close to our UniSC Sunshine Coast campus.

More information about this accommodation can be found on pages 18.

Homestay accommodation

Living with an Australian family gives you the opportunity to experience Australian culture and speak English on a daily basis.

You can search for homestay providers and listings online. One private, standards-based homestay organisation is the Australian Homestay Network (AHN), which gives international students the opportunity to be hosted by a specially trained AHN homestay host for their introduction to accommodation and living in Australia.

For details, costs and applications, visit homestaynetwork.org

Please note: The University of the Sunshine Coast does not provide accommodation or screen information, nor does it act as an agent in the provision of accommodation information. It is your responsibility to determine whether the housing arrangements are suitable. Any person utilising third party information, such as the privately owned accommodation provider information, is advised to read UniSC's Disclaimer. usc.edu.au/disclaimer

Services and facilities

The Institute is a study hub and there are limited services available onsite.

Students studying at the Institute can access all the services and facilities available at the UniSC Sunshine Coast campus.

Students should be aware of the distance between UniSC Sunshine Coast main campus and this study hub:

- Car: 15 minutes
- Bus: 30 minutes

For bus timetables and to plan your journey, visit translink.com.au

Computer access

Computer access is available at the institute. Additionally, computer labs are available 24/7 for current UniSC students at the UniSC Sunshine Coast campus.

Access is gained by placing your UniSC student ID card on the access point at the main entrance to the computer lab.

Visit 'Find A PC' to locate an available PC on this campus or for locations, visit usc.edu.au/maps

Student IT Help

Tel: +61 7 5459 4455

usc.edu.au/technologyandITsupport

Printing, copying and scanning

You can print and photocopy at minimal costs using your UniSC student ID card.

Scanning is free. For more information and printer locations, visit usc.edu.au/library

Library

Thompson Institute students have access to the UniSC Library General Collection at the UniSC Sunshine Coast campus.

For more information, visit libguides.usc.edu.au

Email: LibraryHelp@usc.edu.au

Tel: +61 7 5430 2804

usc.edu.au/library

Food services

There are no cafes or eateries onsite at the Institute. However, there are various shops and eateries close by.





UniSC Moreton Bay

📍 1 Moreton Parade, Petrie Qld
usc.edu.au/maps

UniSC Moreton Bay is Australia's newest university campus in the heart of Moreton Bay. Located in Petrie, the campus offers world-class study opportunities for the region. Adjacent to the Petrie train station and bus stop, the campus is easily accessible by public rail and bus transport, as well as being connected to a dedicated cycle/walking path.

The university precinct is being built on the site of the former Petrie paper mill, two minutes south of the Petrie town centre. For its Traditional Owners, the site has long been a place of learning, and it will once again become a centre of education and knowledge in the region.

UniSC Moreton Bay is the anchor of The Mill at Moreton Bay, a vibrant civic, cultural and business precinct planned by Moreton Bay Regional Council.

The new campus includes a 460-seat capacity lecture theatre, \$15 million worth of state-of-the-art technology, nursing simulation labs, a 120-capacity Superlab for chemical experiments and specialist engineering labs designed for crossdiscipline collaboration, and dedicated student study spaces with 24/7 library access.

Please note: The University of the Sunshine Coast does not provide accommodation or screen information, nor does it act as an agent in the provision of accommodation information. It is your responsibility to determine whether the housing arrangements are suitable. Any person utilising third party information, such as the privately owned accommodation provider information, is advised to read UniSC's Disclaimer. usc.edu.au/disclaimer

Getting around Moreton Bay

UniSC Moreton Bay is within easy reach of the Petrie train station (approximately 400 metres) connecting to the Caboolture and Redcliffe Peninsula rail lines and serviced by local buses. For route and fare information for the public bus and train translink.com.au

Accommodation

It is essential for international students to organise either short or long-term accommodation before arriving in Australia so you know you have somewhere to stay when you get here.

Most students in the Moreton Bay region live in rental accommodation, which they often share with others.

Some students may also choose to live in one of the privately owned accommodation complexes situated in Brisbane, for example

- iglu.com.au
- studentone.com
- unilodgers.com

Homestay

Living with an Australian family gives you the opportunity to experience Australian culture and speak English on a daily basis.

You can search for homestay providers and listings online. One private, standards-based homestay organisation is the Australian Homestay Network (AHN), which gives international students the opportunity to be hosted by a specially trained AHN homestay host for their introduction to accommodation and living in Australia.

For details, costs and applications, visit homestaynetwork.org

Other accommodation

UniSC Moreton Bay is close to suburbs and towns you can find off campus accommodation.

If you would like to rent your own house, apartment, townhouse or flat, real estate agents and private providers advertise on the following websites:

- flatmates.com
- domain.com.au
- realestate.com.au
- easyroommate.com.au


Study Queensland also provides comprehensive accommodation information: studyqueensland.qld.gov.au/live/accommodation

Airport transfers

There are frequent international flights direct to Brisbane, or you can fly into Sydney, Melbourne, Perth or Cairns and take a domestic flight to Brisbane.

You can book airport transfers online at con-x-ion.com

Moreton Bay weather and seasons

-  **Summer:** December to February, 22–35°C, hot, humid and stormy
-  **Autumn:** March to May, 16–28°C, becoming cooler
-  **Winter:** June to August, 10–24°C, colder temperatures
-  **Spring:** September to November, 14–30°C, becoming warmer

Campus services and facilities

Student Central and Wellbeing

Student Centre, Ground Floor
 1 Moreton Parade, Petrie 4502

- **Student Central**
 Tel: +61 7 5430 2890
 Email: studentcentral@usc.edu.au
- **Student wellbeing**
 Tel: +61 7 5430 1226
 Email: studentwellbeing@usc.edu.au

Student IT Help

Tel: +61 7 5459 4455
usc.edu.au/technologyandITsupport

Computers on campus

Students can access computers on campus for general study purposes. You will need your student card to access the room and/or the building. Scheduled classes always have priority access.

At UniSC Moreton Bay, computers are available for student study in the 24/7 study space, to the right of the main entrance.

Visit 'Find A PC' to locate an available PC on this campus or for locations, visit usc.edu.au/maps

Printing, copying and scanning

You can print and photocopy at minimal costs using your UniSC student ID card.

Scanning is free. For more information and printer locations, visit usc.edu.au/library

Library

UniSC Moreton Bay's library is open 24 hours a day for students.

To contact the library:
LibraryHelp@usc.edu.au
 Tel: +61 7 5430 2804
usc.edu.au/library

Food services

There is a kitchen and a common room available for students' use. Various shops and eateries are nearby.



UniSC Caboolture

📍 80–106 Tallon Street, Caboolture Qld
usc.edu.au/maps

UniSC Caboolture is within easy reach of the Caboolture train station (approximately 1.5 kms) and is serviced by local buses.

As part of the Moreton Bay region, UniSC Caboolture is around 25 kilometers north of UniSC Moreton Bay and 50 kilometers south of UniSC Sunshine Coast. The campus is approximately a 50 minute drive north of Brisbane.

UniSC Caboolture offers a hands-on campus experience. The campus includes collaborative learning spaces, interactive technologies, computer labs, student common rooms, sporting facilities, a campus library, and the Health Learning and Simulation Centre, where nursing students build practical skills and work with industry-standard equipment in a simulated hospital environment.

UniSC Caboolture offers all UniSC student services, including academic and study support, library and IT services, counselling, health and wellbeing support, Indigenous Services and more.

Getting around Caboolture

The campus is a 20 minute walk from the Caboolture train station which is also serviced by the Caboolture Bus Lines. The urban services are part of the Translink network.

For bus and train timetables and to plan your journey, visit translink.com.au

Caboolture campus has plenty of free on-site parking available for students.

A free shuttle service is offered for all UniSC students and staff travelling between the UniSC Caboolture campus and the Caboolture train station during semester. This service is called the Caboolture Loop Shuttle. The Caboolture Loop Shuttle Service runs between UniSC Caboolture and the Caboolture train station.

For more information and timetables, visit usc.edu.au/express

Accommodation

It is essential for international students to organise either short or long-term accommodation before arriving in Australia so you know you have somewhere to stay when you get here.

Most students in the Caboolture region live in rental accommodation, which they often share with others.

Some students may also choose to live in one of the privately owned accommodation complexes situated in Brisbane, for example:

- iglu.com.au
- studentone.com
- unilodgers.com

Please note: The University of the Sunshine Coast does not provide accommodation or screen information, nor does it act as an agent in the provision of accommodation information. It is your responsibility to determine whether the housing arrangements are suitable. Any person utilising third party information, such as the privately owned accommodation provider information, is advised to read UniSC's Disclaimer. usc.edu.au/disclaimer

Homestay

Living with an Australian family gives you the opportunity to experience Australian culture and speak English on a daily basis.

You can search for homestay providers and listings online. One private, standards-based homestay organisation is the Australian Homestay Network (AHN), which gives international students the opportunity to be hosted by a specially trained AHN homestay host for their introduction to accommodation and living in Australia.

For details, costs and applications, visit homestaynetwork.org

Other accommodation

UniSC Caboolture is close to suburbs and towns you can find off campus accommodation.

If you would like to rent your own house, apartment, townhouse or flat, real estate agents and private providers advertise on the following websites:

- flatmates.com
- domain.com.au
- realestate.com.au
- easyroommate.com.au

Study Queensland also provides comprehensive accommodation information: studyqueensland.qld.gov.au/live/accommodation

Airport transfers

There are frequent international flights direct to Brisbane International Airport, which is the closest international airport to Caboolture.

You can fly direct to Brisbane, or fly into Sydney, Melbourne, Perth or Cairns, and take a connecting flight to Brisbane. You can book airport transfers online at con-x-ion.com

Campus services and facilities

Student Central and Wellbeing

J Block — Level 1, Cnr Manley and Tallon Street, Caboolture
 Tel: +61 7 5430 2900

Student IT Help

Tel: +61 7 5459 4455
usc.edu.au/technologyandITsupport

Please note: The campus gates are locked daily and the campus is closed on Sundays and all public holidays. Please refer to the Library and Student Central for their campus opening hours as they differ to the computer lab/common room hours.



Computers on campus

UniSC Caboolture has a number of student computer labs for research, assignment preparation, printing and group study. The labs are located in the following Buildings J2.02, B2.07, the Library, N Block—Student Common Building and H Block—Indigenous Services Learning Hub. Labs are only available when formal classes are not running.

Visit 'Find A PC' to locate an available PC on this campus or for locations, visit usc.edu.au/maps

Printing, copying and scanning

You can print and photocopy at minimal costs using your UniSC student ID card.

Scanning is free. UniSC Caboolture has four colour copier/printer/scanners available in the library and in Building J and H.

For more information and printer locations, visit usc.edu.au/library

Library

The library is a shared facility with TAFE Queensland and has a dedicated UniSC Library Helpdesk. The library offers Reserve and General collections.

For more information, visit libguides.usc.edu.au

To contact the library:

LibraryHelp@usc.edu.au
 Tel: +61 7 5430 2804
usc.edu.au/library

Food services

There is a Cafeteria on campus and also a common room for students' use.

Other shops and cafés are just a short walk from the UniSC Caboolture campus.

Caboolture weather and seasons

-  **Summer:** December to February, 22–35°C, hot, humid and stormy
-  **Autumn:** March to May, 16–28°C, becoming cooler
-  **Winter:** June to August, 10–24°C, colder temperatures
-  **Spring:** September to November, 14–30°C, becoming warmer



UniSC Gympie

71 Cartwright Road, Gympie Qld
usc.edu.au/maps

UniSC Gympie is located in beautiful natural surrounds and connects to UniSC Sunshine Coast via a daily shuttle bus.

The campus is approximately an hour's drive north of the UniSC Sunshine Coast campus.

The Gympie region is ideally situated only two hours from Brisbane and 30 minutes from Noosa. It is on the doorstep of the World Heritage listed Fraser Island and Great Barrier Reef and is home to an abundance of state and national parks and part of the Great Sandy Biosphere.

The population of the Gympie region is approximately 50,000 people.

Campus facilities include interactive learning technologies, collaborative study areas and computer labs.

UniSC Gympie offers all UniSC student services, including academic and study support, library and IT services, counselling, health and wellbeing support, Indigenous Services and more.



Getting around Gympie

Public transport via bus in the Gympie area is provided by Polleys and operates between the hours of 8am and 5pm Monday to Friday with some routes providing services on weekends.

For route information and bus timetables, visit polleys.com.au

Queensland Rail runs two train services daily between Gympie, the Sunshine Coast and Brisbane. For more information, visit translink.com.au

Accommodation

It is essential for international students to organise either short or long-term accommodation before arriving in Australia so you know you have somewhere to stay when you get here.

There are currently no student accommodation providers based in Gympie.

UniSC Gympie is close to suburbs and towns where off-campus accommodation is easy to find.

If you would like to rent your own house, apartment, townhouse or flat, real estate agents and private providers advertise on the following websites:

- flatmates.com
- domain.com.au
- realestate.com.au
- easyroommate.com.au

Study Queensland also provides comprehensive accommodation information:
studyqueensland.qld.gov.au/live/accommodation

Homestay

Living with an Australian family gives you the opportunity to experience Australian culture and speak English on a daily basis.

You can search for homestay providers and listings online. One private, standards-based homestay organisation is the Australian Homestay Network (AHN), which gives international students the opportunity to be hosted by a specially trained AHN homestay host for their introduction to accommodation and living in Australia.

For details, costs and applications, visit homestaynetwork.org

Please note: The University of the Sunshine Coast does not provide accommodation or screen information, nor does it act as an agent in the provision of accommodation information. It is your responsibility to determine whether the housing arrangements are suitable. Any person utilising third party information, such as the privately owned accommodation provider information, is advised to read UniSC's Disclaimer. usc.edu.au/disclaimer

Airport transfers

There are frequent international flights direct to Brisbane International Airport, which is the closest international airport to Gympie.

You can fly direct to Brisbane, or fly into Sydney or Melbourne, and take a connecting flight to Brisbane or the Sunshine Coast.

There are daily domestic flights from Sydney and Melbourne to Maroochydore (Sunshine Coast) Airport, which is a 60-minute drive from Gympie.

You can book airport transfers online at con-x-ion.com

Gympie weather and seasons

-  **Summer:** December to February, 22–35°C, hot, humid and stormy
-  **Autumn:** March to May, 16–28°C, becoming cooler
-  **Winter:** June to August, 10–24°C, colder temperatures
-  **Spring:** September to November, 14–30°C, becoming warmer

Campus services and facilities

Student Central and Wellbeing

71 Cartwright Road, Gympie
 Tel: +61 7 5456 5800

Student IT Help

Tel: +61 7 5459 4455
usc.edu.au/technologyandITsupport

Computers on campus

Students have access to three computers and a virtual IT Helpdesk in the learning commons area opposite the student kitchen as well as an additional eight computers on Level 1. You will need your UniSC student ID card to access the building outside standard office hours.

Visit **'Find A PC'** to locate an available PC on this campus or for locations, visit usc.edu.au/maps

Printing, copying and scanning

You can print and photocopy at minimal costs using your UniSC student ID card.

Scanning is free. UniSC Gympie has one colour printer (A4), binding machine and guillotine located in the Student Commons Area.

For more information and printer locations, visit usc.edu.au/library

Library

The library is a shared space with the Wide Bay Institute of TAFE (Gympie Campus) and offers Reserve and General collections.

To contact the library:

LibraryHelp@usc.edu.au
 Tel: +61 7 5430 2804
usc.edu.au/library

Food Services

There is a canteen located opposite the UniSC Gympie building in Block A of the Wide Bay Institute of TAFE (Gympie Campus).

There is also a student kitchen equipped with a fridge, microwave, basic cutlery and utensils.



UniSC Fraser Coast

📍 161–179 Old Maryborough Road, Hervey Bay Qld
usc.edu.au/maps

UniSC Fraser Coast is located in the heart of Hervey Bay, approximately 2.5 hours north of the UniSC Sunshine Coast campus by car and with easy access to UniSC's K'gari Research and Learning Centre.

The campus is located in the central business district, a short walk from local shops and cafés and a few minutes' drive to quiet bayside beaches.

Campus facilities include interactive learning technologies, simulated nursing wards, specialist science laboratories, a student library, a Makerspace, collaborative study areas and computer labs.

UniSC Fraser Coast offers all UniSC student services, including academic and study support, library and IT services, counselling, health and wellbeing support, Indigenous Services and more.



Getting around Hervey Bay

Wide Bay Transit buses link the campus with all major shopping centres and suburbs of Hervey Bay and Maryborough.

For route information and bus timetables, visit widebaytransit.com.au

UniSC Fraser Coast is easily accessible by car and bicycle, with ample parking.

Accommodation

It is essential for international students to organise either short or long-term accommodation before arriving in Australia so you know you have somewhere to stay when you get here.

UniSC Fraser Coast is close to suburbs and towns where you can find off campus accommodation.

If you would like to rent your own house, apartment, townhouse or flat, real estate agents and private providers advertise on the following websites:

- flatmates.com
- domain.com.au
- realestate.com.au
- easyroommate.com.au
- share-accommodation.net

Study Queensland also provides comprehensive accommodation information:
studyqueensland.qld.gov.au/live/accommodation



Homestay

Living with an Australian family gives you the opportunity to experience Australian culture and speak English on a daily basis.

You can search for homestay providers and listings online. One private, standard-based homestay organisation is the Australian Homestay Network (AHN), which gives international students the opportunity to be hosted by a specially trained AHN homestay host for their introduction to accommodation and living in Australia.

For details, costs and applications, visit homestaynetwork.org

Please note: The University of the Sunshine Coast does not provide accommodation or screen information, nor does it act as an agent in the provision of accommodation information. It is your responsibility to determine whether the housing arrangements are suitable. Any person utilising third party information, such as the privately owned accommodation provider information, is advised to read UniSC's Disclaimer. usc.edu.au/disclaimer

Airport transfers

There are frequent international flights direct to Brisbane International Airport, which is the closest international airport to Hervey Bay.

Fraser Coast Airport is a 10-minute drive from the campus, with direct flights to both Brisbane and Sydney.

You can book airport transfers online at con-x-ion.com

Campus services and facilities

Student Central and Wellbeing

Building A, 161 Old Maryborough Road, Hervey Bay
 Tel: +61 7 4128 5200

Student IT Help

Tel: +61 7 5459 4455
usc.edu.au/technologyandITsupport

Computers on campus

UniSC Fraser Coast has a number of student computer labs for research, assignment preparation, printing and group study. The labs in Building A are available 24/7 with swipe-card access.

Students also have 24/7 access to computers and desk space for laptops in the quiet study area of the Library.

Visit 'Find A PC' to locate an available PC on this campus or for locations, visit usc.edu.au/maps

Printing, copying and scanning

You can print and photocopy at minimal costs using your UniSC student ID card.

Scanning is free. UniSC Fraser Coast has 2-colour copier/printer/scanners a binding machine and laminator located in the library and Building A.135.

For more information and printer locations, visit usc.edu.au/library

Library

The library is a shared building with the Fraser Coast Regional Council public library. The library is accessible 24/7 via student ID card but the collection is only accessible during opening hours.

The library offers access Reserve and General collections.

To contact the library:


LibraryHelp@usc.edu.au
 Tel: +61 7 5430 2804
usc.edu.au/library


Food services


There is The Village Caterer Café on campus and also kitchenettes and a common room for students' use.


Other shops and cafés are just a short walk from UniSC Fraser Coast.

Hervey Bay weather and seasons

 **Summer:** December to February, 22–35°C, hot, humid and stormy

 **Autumn:** March to May, 16–28°C, becoming cooler

 **Winter:** June to August, 10–24°C, colder temperatures

 **Spring:** September to November, 14–30°C, becoming warmer

Important information

Education Services for Overseas Students (ESOS) Framework

The ESOS Act and National Code ensure international students in Australia get the education they desire.

To access the National Code of Practice 2018, or for a description of the ESOS framework for students, visit internationaleducation.gov.au/regulatory-information

Deferring or cancelling your enrolment prior to study commencement

If you have, or plan to apply for a Student visa, you have the option to apply for deferral of your start date in exceptional circumstances and before the start date shown on your Confirmation of Enrolment (CoE). In order for your application for deferral to be considered, you must be able to demonstrate compassionate and compelling circumstances. Your application will then be re-assessed for commencement on the deferred start date and, if approved, you will be provided with a new letter of offer and written agreement. The change to your enrolment will be reported to the Department of Home Affairs (DOHA).

If you cancel your enrolment prior to commencement, your CoE will also be cancelled and the change to your enrolment status will be reported to DOHA.

Deferring, suspending or cancelling student enrolment after study commencement

There are limited circumstances where a student visa holder's studies may be deferred or temporarily suspended.

These are outlined in the National Code of Practice 2018 and include:

- compassionate or compelling circumstances, or
- misbehaviour by the student

A deferral or suspension of study may affect the validity of your Student visa.

In the event UniSC intends to suspend or cancel a student's enrolment, where that suspension or cancellation is not initiated by the student, UniSC will notify the student that they have 20 working days to access UniSC's internal appeals process.

All students must abide by UniSC by-laws and rules, and are subject to all UniSC regulations. Please familiarise yourself with UniSC policies regarding fees and refunds, grievance handling procedures and academic progress. For details, refer to usc.edu.au/intinfo

If the student accesses the appeals process, the enrolment will not be suspended or cancelled until the internal appeals process is completed.

Student Fees and Charges – Governing Policy and Student Fees, Charges and Refunds – Procedures

UniSC's Student Fees and Charges – Governing Policy and related procedures can be found at usc.edu.au/FeeProcedures

The Student Fees, Charges and Refunds – Procedures outline refunds payable in the case of both student and provider default, amounts that may or may not be repaid, and the processes for claiming refunds.

International students should read and understand UniSC's Student Fees and Charges Policy and related procedures before entering into a written agreement by accepting their offer.

Student Grievance Resolution – Governing Policy

Student grievances may involve academic decisions, administrative decisions and/or general grievances relating to the student experience for which the student is seeking resolution.

UniSC's student complaints and grievances policies can be found at usc.edu.au/student-grievance-policy

Students who are dissatisfied with the outcome of UniSC's grievance handling procedures may submit an appeal external to the University with the State Ombudsman or similar external body.

The availability of complaints and appeals processes does not remove your right as a UniSC student to take action under Australia's consumer protection laws.

Written notices are given to students by electronic communication.



Contact hours and study commitment

Each course* studied normally consists of a two-hour seminar/tutorial or workshop per week which is supported with interactive online learning materials.

As a guide, students should also allow an average of an additional six to seven hours per course per week for self-directed study, research, readings and assignments.

A standard full-time workload per study period for most programs is four courses.

Refer to your chosen program information page on the UniSC website for detailed information about your program sequence and study loads.

Academic progress

All students must maintain satisfactory progress in each study period (semester/trimester/session).

Students who do not maintain satisfactory progress may be identified as being 'at risk' or be excluded from the University.

UniSC's Academic Progress and Exclusion policy and procedures can be found at usc.edu.au/academic-progress*

Students studying on a Student visa are reminded of Student visa condition 8202 regarding satisfaction of attendance/academic requirements.

UniSC must notify the Department of Home Affairs (DOHA) of any breaches of Student visa conditions, including unsatisfactory progress, which may impact on the validity of your visa.

You will be notified in writing, via electronic communication, if there is an intention to report to DOHA.

Academic progress for HDR students is outlined in the HDR Candidature – Procedure: usc.edu.au/about/policiesand-procedures/higher-degrees-byresearch-candidature-procedures

* For coursework study only.

Program tuition fees

Estimated tuition fees are based on the current year's tuition fees and a standard full-time enrolment load (48 units) in a study period. Students pay fees based on their actual enrolment load in each teaching period (eg semester/session), which varies between programs. You should check the program page for your program to review actual study load details.

Tuition fees are reviewed each calendar year. The fee you must pay for a given teaching period is that which has been approved by UniSC for the calendar year in which the teaching period commences.

Any increase in tuition fees from one calendar year to the next will be no more than 7 percent.

All prices quoted are in Australian dollars (A\$).

Refer to the Student Fees and Charges – Governing Policy and associated procedure:

- usc.edu.au/internationalprograms
- usc.edu.au/feeprocedures

Payment of future tuition fees

You will not be emailed or posted an invoice for your future tuition fees.

You are required to obtain your invoice from your USC Central online account and to pay fees for future teaching periods by the published fee due dates of the relevant teaching period, which can be found on the Academic calendar at usc.edu.au/calendars

Consequences of not paying fees

Once you have commenced studying you will be charged by the University per teaching period of your enrolment for any fees or charges incurred.

If you do not make payment by the fees due date, you will be subject to a late payment fee and your enrolment may be cancelled.

UniSC will notify you that you have 20 working days to access UniSC's internal appeals process.

A student whose enrolment is cancelled for non-payment of fees remains liable for those fees. You will not be able to enrol again unless the debt is paid.

Cancellation of enrolment may also affect your Student visa.

Transfer between providers

You must remain enrolled at UniSC for the first six months of your principal program of study (the main course of study being undertaken) or for the duration of your program if it is less than six months.

Once you have completed six months in your principle program at UniSC you can transfer to another provider. It is important that you remain compliant with your visa conditions and you should contact DOHA to discuss your study intentions.

If you wish to be released from your studies at UniSC prior to completing six months, you can submit an 'Application for release'.

All requests for release will be considered in accordance with the UniSC Transfer of Student Visa Students between Registered Providers—Managerial Policy and Procedures: usc.edu.au/policy

Withdrawing from studies

Prior to considering withdrawal from UniSC, you should contact Student Wellbeing and Student Central to discuss your options. Often, alternative arrangements can be made that will allow you to continue your studies at UniSC.

Withdrawal from courses after certain dates within a study period may incur financial and/or academic penalty.

You are required to check important dates on the academic calendar and refer to the Student Fees and Charges – Governing Policy and related procedures at usc.edu.au/FeeProcedures prior to submitting your withdrawal request.

Once your withdrawal is processed, DOHA will be notified of the change to your enrolment and this may affect the validity of your Student visa.

Professional recognition of UniSC programs

Some of UniSC's programs are accredited or recognised by professional bodies in Australia.

Professional recognition may afford graduates automatic membership of a professional body or allow graduates to apply for membership.

In some cases, membership of a professional body requires meeting criteria in addition to a higher education qualification. For example, you may need to demonstrate a specific level of English language proficiency or hours of work experience.

To practice in certain professions, membership of the relevant professional body is required.

Some key things to keep in mind are:

- You should investigate the requirements for membership of professional bodies relevant to your degree program.
- You should confirm with any relevant overseas (or Australian) professional body that your UniSC qualification will entitle you to work in your intended profession, and what other criteria you might be required to meet.

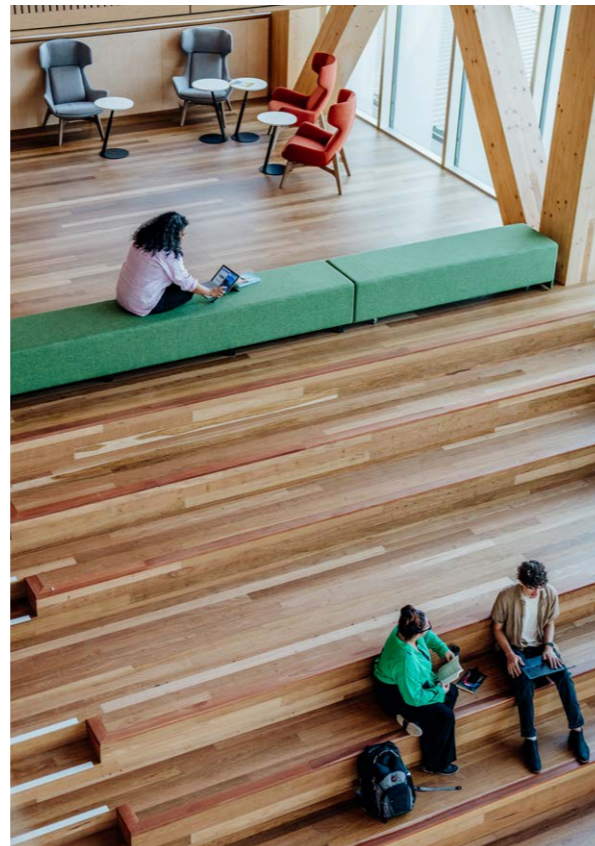
You can find information about UniSC degrees and professional recognition on individual program information pages at usc.edu.au/programs

Copyright

Australian copyright laws are strict.

As a UniSC student, you must comply with copyright laws and with the UniSC Copyright Policy. Please observe the copyright notices around campus, including at copiers and print stations in the library, and in computer labs. You will also see a copyright notice when you log in to the UniSC Network.

UniSC's Copyright Policy can be viewed at usc.edu.au/Copyright



Checklist

Use the following checklist to make sure you have made all necessary arrangements to start your studies at UniSC. Where applicable, you should also follow the advice of your agent or home institution.

1	Received an unconditional offer from UniSC	<input type="checkbox"/>	DATE
2	Accepted your offer and made payment	<input type="checkbox"/>	DATE
3	Received your CoE from UniSC if studying on a Student visa	<input type="checkbox"/>	DATE
4	Applied for and received your Student visa from DOHA	<input type="checkbox"/>	DATE
5	Received your USC Central username and password from UniSC	<input type="checkbox"/>	DATE
6	Completed your online enrolment using USC Central and confirmed your timetable	<input type="checkbox"/>	DATE
7	Booked your flight to Brisbane or Maroochydore (Sunshine Coast) Airport	<input type="checkbox"/>	DATE
8	Arranged accommodation and airport transfer	<input type="checkbox"/>	DATE
9	Attended Orientation activities in the week prior to the commencement of classes	<input type="checkbox"/>	DATE



University of the
Sunshine Coast
Australia

Have any questions, or want to learn more?

Contact the International Office and
we would be happy to assist you further.

International Office

usc.edu.au/international

international@usc.edu.au

Tel: +61 7 5430 2843



UniSC.International

CRICOS Provider Number: 01595D | TEQSA PRV12082