

Postgraduate coursework degrees 2013

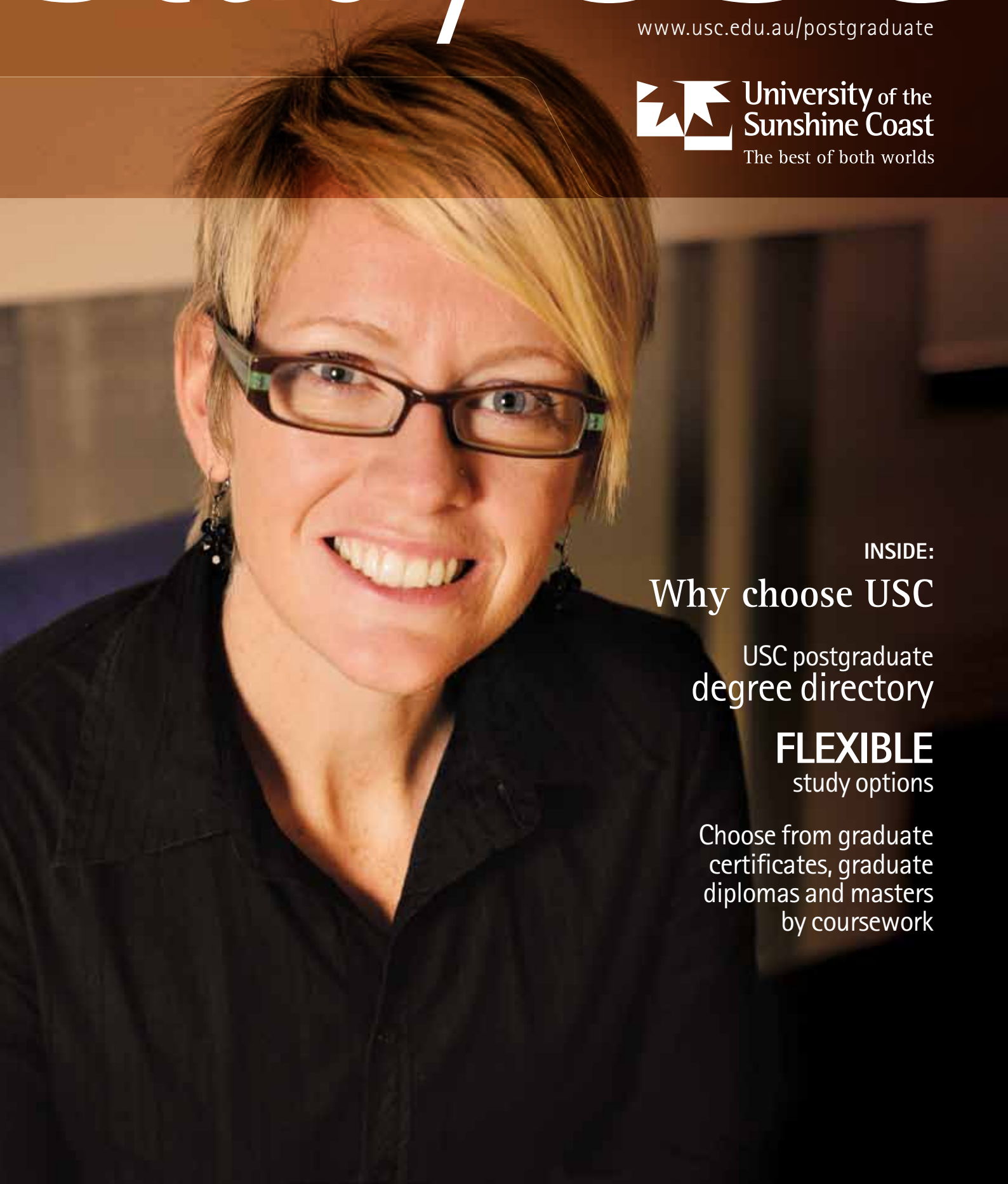
# Study USC

[www.usc.edu.au/postgraduate](http://www.usc.edu.au/postgraduate)



University of the  
Sunshine Coast

The best of both worlds



INSIDE:

Why choose USC

USC postgraduate  
degree directory

**FLEXIBLE**

study options

Choose from graduate  
certificates, graduate  
diplomas and masters  
by coursework



# OUR UNIVERSITY.

The University of the Sunshine Coast is the only full-service university campus on the Sunshine Coast. Our 8,000 students enjoy a quality university experience and the relaxed Sunshine Coast lifestyle.

For teaching quality and graduate satisfaction, USC rates the highest of any public university in Queensland in The Good Universities Guide 2012.

A wide range of bachelor degrees and postgraduate studies are offered in the fields of Business (incl. tourism) and IT; Communication and Design; Education; Health (incl. nursing); Humanities and Social Sciences; and Science and Sustainability.

Half of our students do not come directly from Year 12, bringing life and work experience to classes. Also, about half of USC students are the first in their family to take advantage of the opportunity uni offers. And now, more than

10,000 of our graduates are working on the coast, nationally and around the world.

USC research focuses on sustainability (incl. climate change adaptation), and genecology (incl. aquaculture and forestry projects).

The University's economic contribution to the Sunshine Coast region is estimated at \$500 million annually.



University of the  
Sunshine Coast  
The best of both worlds

[www.usc.edu.au](http://www.usc.edu.au)



## Welcome from the Vice-Chancellor

In a world of rapid change and increasing competition, a postgraduate qualification can give you the skills and confidence to take your career to the next level.

At USC, we understand the need to balance work or family commitments with your study, and offer full-time or part-time study, flexible delivery options and support services to help you manage these demands.

As a postgraduate student at USC, you will have access to academic staff who are highly qualified and who are consistently commended for a more personal relationship with students. In fact, USC rates the highest of any public university in Queensland for teaching quality and graduate satisfaction.\*

USC's modern campus with the latest facilities, coupled with our Sunshine Coast location, provide a wonderful study environment.

I encourage you to join the growing community of USC postgraduate students making their mark on the world.

Contact us to learn more about the University and your postgraduate study options.

We look forward to meeting you.

Professor Greg Hill  
Vice-Chancellor and President

\* The Good Universities Guide 2012



## Talk to us.

Meet USC staff and students at events during the year. Refer to the back cover for details.



# CONTENTS



## Why choose USC ..... 2

It's the best of both worlds. Students choose USC for a quality academic experience and the relaxed Sunshine Coast lifestyle.

## Postgraduate options ..... 4

Explore your study options to decide on the best type of postgraduate experience for you.

## On campus ..... 6

USC students benefit from ready access to teaching and support staff in a friendly and modern campus environment.

## Living on the Sunshine Coast ... 8

There's more than sun, sand and waves. Find out what else the Coast has to offer.

## Student support ..... 10

A complete suite of support services are on campus so if you need support at any time throughout your studies, just ask.

## Study costs ..... 12

There are costs to consider when thinking about university, and financial assistance is available.

## Steps to study ..... 14

Step through the application process and learn more about credit transfer arrangements with other institutions.

## Postgraduate degree directory... 15

Choose from degrees in business and IT, communication and design, education, health, humanities and social sciences, and science and sustainability.

## Questions? Answered ..... 32

University staff are ready to answer your questions. Use the directory to find contacts and resources and to learn more about University terminology.

# 10 REASONS...

Whether you're aiming for a career change or to enhance your qualifications, the postgraduate experience takes you further—it builds on the knowledge and skills that you developed as an undergraduate and opens the door to a world of new ideas, career opportunities and personal fulfilment. Choose from a coursework program for personal and career advancement, or a higher degree by research to specialise in your field of study.



## 1 A five-star education

USC's academics are experts in delivering a quality education—USC was the only public university in Queensland to be awarded five stars for teaching quality in the 2012 Good Universities Guide.

## 2 Study choices

Choose from a wide range of degree programs and tailor your studies to meet your needs. USC offers around 50 postgraduate degrees in the areas of business and information technology, communication and design, education, health, humanities and social sciences, and science and sustainability. Refer to the degree directory on page 15.

## 3 The best environment to think

One of the first things you will notice on campus is the friendly and relaxed atmosphere. It's not unusual to see kangaroos on the way to class—they are just another part of the campus community. There are wide open spaces to chill out, study and meet friends. USC is renowned for its environmentally sustainable design, distinctive architecture and modern facilities. And best of all, you are close to everything the beautiful Sunshine Coast has to offer! Find out what else is on campus (pages 6-7) and on the Sunshine Coast (pages 8-9).

## 4 Support

Access a range of support services and staff who can help you through your university experience. On campus you will find academic skills support, careers and employment services, counselling, financial support, and Indigenous, disability and welfare services. Find out more on pages 10-11.

## 5 Convenience

USC offers postgraduate coursework programs in a variety of delivery modes so you can choose the most convenient study option for you. Study modes include on campus, online, multi-modal, blended and intensive—a description of each mode is listed on page 4. Study modes vary between programs—refer to the degree directory on page 15.





## 6

### Personal attention

"I think you can get an education anywhere, but it's the relationships you build with other students and especially lecturers that you can't get anywhere else. USC was perfect for developing this – the lecturers are more than just the people that stand in front of you and teach, they are friends."

**Brandon Bull**

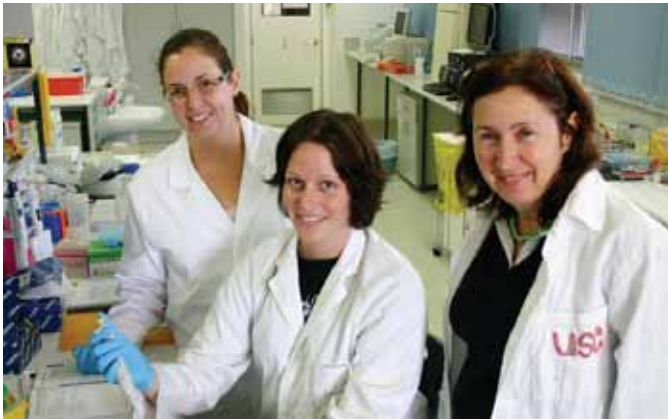
Graduate Diploma in Education, 2009

Teacher, Umbakumba School, Umbakumba Community

## 7

### Research and discover

The Sunshine Coast environment provides great opportunities for research—many USC researchers specialise in climate change adaptation, aquaculture, tropical forestry, and sport and exercise science. You could study alongside experts like Professor Abigail Elizur—her research on 'tank-bred tuna' claimed second place in Time magazine's report on the 50 best inventions of 2009. To learn more about higher degrees by research, obtain a copy of USC's Research Guide.



## 8

### Easy access

On campus parking, subsidised public transport, and free express shuttles (limited stops) make the campus more accessible. There are regular bus services to locations across the coast, a connecting bus to Queensland Rail at Landsborough, and plenty of bike and pedestrian paths to surrounding suburbs.

## 9

### Innovative thinking

With a business incubator on campus, you have access to the best in business. The Innovation Centre offers mentoring opportunities for entrepreneurial students, an annual program of business networking events, and opportunities to undertake work experience with around 25 resident businesses.

## 10

### Look to the future

Once you graduate you can pursue career opportunities around the world, within Australia and locally. USC was awarded the highest graduate satisfaction rating of any public university in Queensland in the 2012 Good Universities Guide—find out why our graduates enjoyed their experience by visiting the campus for one of our information events (refer to the back cover).



# POSTGRADUATE OPTIONS



## Going further?

### STUDY HONOURS OR A POSTGRADUATE PROGRAM...

- honours expands on undergraduate studies and is a pathway to postgraduate research
- postgraduate research involves extensive research and a thesis on a specific topic (Masters by Research, Doctorate, PhD)
- postgraduate coursework is similar in structure to a Bachelor degree, but more advanced content (Graduate Certificate, Graduate Diploma, Masters)
- discuss your options with the head of the relevant discipline before applying

## If you are considering...

### HONOURS

Get a copy of the companion publication *Study USC—Undergraduate degrees 2013*, or visit the website for more information.  
[www.usc.edu.au/honours](http://www.usc.edu.au/honours)

### HIGHER DEGREE BY RESEARCH

Get a copy of the companion publication *Research USC*, or visit the website for more information.  
[www.usc.edu.au/hdr](http://www.usc.edu.au/hdr)

### POSTGRADUATE COURSEWORK

Read on for information about study modes, assessment, study periods and application deadlines.

## Who is eligible for postgraduate study?

[www.usc.edu.au/postgraduate](http://www.usc.edu.au/postgraduate)

To gain entry to most postgraduate programs, you must hold a bachelor degree or equivalent from a recognised tertiary institution. The Executive Deans of each faculty may consider entry by non-graduates who have extensive relevant industry experience, on a case-by-case basis.

Depending on your choice of program, there can be several requirements that you must meet to be eligible for admission. Some postgraduate programs require your undergraduate study to be in the same discipline, while others expect your previous study to be in a different area. Some programs have prerequisites or require a specific GPA to gain entry, while others may require documented work experience, expect you to sit an admissions test, or attend an interview. Check the USC website for the specific admission requirements for your chosen program.

## COURSEWORK

If you are looking to enhance your professional qualifications, or gain a qualification in a different area to your undergraduate degree, consider a coursework program. These programs are offered at three levels—Graduate Certificate, Graduate Diploma and Masters by Coursework—many encompassing four, eight and twelve courses respectively.

Most coursework programs can lead to further study. In many disciplines the programs are nested, which means that you can complete a Graduate Certificate then return later to complete a Graduate Diploma or Masters and receive full credit for courses completed as part of the lower award. Check the degree directory on page 15 for more information.

You need to balance your career and personal life along with your study commitments. To help, USC offers coursework programs in a range of study modes:

- **On campus:** Much like your undergraduate degree, studying on campus involves lectures, tutorials, workshops and seminars, plus additional study in your own time. At postgraduate level, on-campus study modes may also be tailored to suit your program. Variations include:
  - **Multi-modal:** These on-campus programs offer you the option of switching delivery modes mid-program. If work commitments increase and you are struggling to get to campus on time, you are free to switch to online mode. This option is not available on all programs.
  - **Blended:** Some on-campus courses are delivered in a blended mode, where study is simultaneously undertaken both on campus (in lectures and tutorials) and online via access to study materials, activities and exercises on the internet.
  - **Intensive:** To provide more flexibility, some coursework programs are offered in an intensive mode. This involves short blocks of study on campus combined with independent study such as readings, exercises and the preparation of assessment items. For example, climate change courses offered in this mode involve 120 hours of study per course—60 hours on campus over six or seven days, followed by 60 hours of independent study. In contrast, the Executive MBA is delivered via intensive weekend classes once a month over two years.

- **Online:** Enjoy the freedom and flexibility of studying where you want, when you want. Online coursework programs do not require any on-campus attendance. These programs are not available to international students on a Student visa.

Study modes vary between programs—refer to the degree directory on page 15 for more information.

USC offers a range of postgraduate programs. By undertaking postgraduate study, you can further develop your knowledge base, meet professional accreditation requirements, or perform high-level research in a specific area of academic interest.

[www.usc.edu.au/postgraduate](http://www.usc.edu.au/postgraduate)

## ASSESSMENT

For coursework students, assessment includes examinations at the end of sessions, semesters, and trimesters, regular on-going assessment by way of assignments and presentations, or a combination of these. Some programs may also include a research component.

## PROGRAM DURATIONS

The time taken to complete a postgraduate program varies significantly depending on the delivery mode and the study load. This guide lists both the standard full-time and part-time durations.

## STUDY PERIODS

The program descriptions in this guide list the program's commencement date. Some postgraduate programs follow traditional semester-based timing, however more are offering greater flexibility, intensive course delivery and options to study outside traditional semester-based timetables.

In addition to semesters, USC offers eight sessions and three trimesters per year in which programs run for varying lengths of time. If your chosen program runs on a sessional basis, contact the relevant faculty to discuss the timing of study options available to you.

## APPLICATION CLOSING DATES

USC accepts applications for postgraduate study throughout the year for all programs of study. If successful, you will be offered a place in the next semester, session or trimester (as applicable).

**To commence in Semester 1, 2013, applications should be submitted by 30 November 2012.\***

Exceptions for Semester 1 entry include:

- Master of Psychology (Clinical)—submit application by 26 October 2012.
- Master of Midwifery (Pathways 1 and 2)—submit application by 31 October 2012.

**To commence in Semester 2, 2013, applications should be lodged by 31 May 2013.\***

Session- and trimester-based applications should be submitted four weeks before the commencement of the session.\* Refer to your program description and the study periods, and use your commencement date to determine your timing to apply.

Applications for the Graduate Diploma in Education programs need to be submitted via QTAC.  
[www.qtac.edu.au](http://www.qtac.edu.au)

\* Late applications may be accepted.



## If research is your passion...

Many USC students continue studying to gain further research qualifications, often specialising in either genecology or sustainability, but you can choose from a diverse array of fields.

In Communication and Design, you can pursue topics such as art and digital design, creative writing and journalism.

If Humanities and Social Sciences are your passions, you can select areas such as education research, environmental studies and planning, historical studies, political studies and international politics, psychology or social sciences.

As a Business researcher, you can choose to explore accounting, entrepreneurship, information systems, management, marketing, international business or tourism.

In Health, you can undertake research in areas such as preventative health and rehabilitation or understanding and enhancing sports performance.

You can research developments in Education, and if your interest is in Science, you can investigate issues such as coastal management, climate change, water management, natural and cultural heritage, innovation, adaptive growth, and community wellbeing.

Higher degrees by research are available at doctoral and masters levels across most discipline areas. USC's research supervision enables research graduates to make strong contributions to Australia's innovations, economy, society, culture and environment. HDR qualifications can lead to careers in universities, research agencies, and research and development arms of private and public sector organisations.

So if you are considering a research pathway, get a copy of USC's Research guide, visit the website for more research ideas, discuss your ideas with the Office of Research, or contact the relevant faculty to ask about appropriate research supervision.

[www.usc.edu.au/hdr](http://www.usc.edu.au/hdr)

Office of Research  
Tel: 07 5459 4526  
Email: [researchtraining@usc.edu.au](mailto:researchtraining@usc.edu.au)





You'll find USC's campus has everything you need to enjoy the complete student experience. The campus is well known for its green spaces, modern buildings and resident kangaroos, but there are also award-winning facilities that cater for teaching, studying, eating, sporting and socialising.

# USC on campus







**Accommodation** – three privately owned student villages are a short walk from campus (page 8). [www.usc.edu.au/accommodation](http://www.usc.edu.au/accommodation)

**Art Gallery** – free admission and a diverse annual exhibition program, including students' work. [www.usc.edu.au/gallery](http://www.usc.edu.au/gallery)

**ATMs** – two located on campus. [www.usc.edu.au/maps](http://www.usc.edu.au/maps)

**Athletics track** – Olympic-standard running track, including long jump, high jump, pole vault and hammer throw. [www.usc.edu.au/sport](http://www.usc.edu.au/sport)

**Bookshop** – the Co-op Bookshop sells books, stationery, academic software and USC merchandise year round. [www.usc.edu.au/bookshop](http://www.usc.edu.au/bookshop)

**Cafés** – four eateries (Café J, Café C, the Brasserie, Sports Café) and vending machines provide a wide range of food and drinks. [www.usc.edu.au/cafes](http://www.usc.edu.au/cafes)

**Carparking** – available on campus but can be limited in peak times. Carpool to share the ride and the cost. [www.usc.edu.au/parking](http://www.usc.edu.au/parking)

**Childcare** – an AEIOU Early Learning Centre on campus provides 66 places for children aged six weeks to five years. [www.sdearlylearning.com.au](http://www.sdearlylearning.com.au)

**Computer labs** – with labs open 24-hours, there are more than 600 computers across campus available for student use. [www.usc.edu.au/online](http://www.usc.edu.au/online)

**Indigenous information and support** – the Buranga Centre is a resource for Aboriginal, Torres Strait Islander and Australian South Sea Islander students. The centre has computers, study desks, kitchenette and a lounge area. [www.usc.edu.au/indigenous](http://www.usc.edu.au/indigenous)

**Innovation Centre** – USC's business incubator for start-up ventures. Attend networking events, gain work experience or receive support to start a business. [www.innovation-centre.com.au](http://www.innovation-centre.com.au)

**International student support** – USC International provides information and support for international students. [www.usc.edu.au/international](http://www.usc.edu.au/international)

**Library** – open seven days a week during semester, the award-winning Library has more than 100,000 print volumes and 60,000 digital resources, individual and group study areas, copy and print facilities, information desk (including IT, library and academic support) and remote online access to full-text journals and databases. [www.usc.edu.au/library](http://www.usc.edu.au/library)

**Mail and print services** – for printing, photocopying, binding, and lost property needs. [www.usc.edu.au/mailservices](http://www.usc.edu.au/mailservices)

**Off-campus study hubs** – Located 45 minutes north of the campus, Noosa-based students can study some courses and access computer facilities closer to home at the USC Noosa Centre. A new USC learning hub in Gympie, co-located with TAFE, is due to open in 2013. [www.usc.edu.au/noosa](http://www.usc.edu.au/noosa)

**Public transport** – services operate between USC's large bus interchange and destinations across the Sunshine Coast, seven days a week. Students are eligible for discounted fares. A free express shuttle is also available to staff and students at select stops on the Coast. [www.usc.edu.au/transport](http://www.usc.edu.au/transport)  
[www.translink.com.au](http://www.translink.com.au)

**Psychology Clinic** – the clinic offers free appointments to students, and is a training facility for postgraduate students in clinical psychology. [www.usc.edu.au/psychologyclinic](http://www.usc.edu.au/psychologyclinic)

**Research facilities** – science labs, a sustainability research centre, sport and exercise science research facilities, and a research and learning centre at Dilli Village on Fraser Island. [www.usc.edu.au/research](http://www.usc.edu.au/research)

**Security** – 24-hours, every day, with after-hours vehicle escorts available. [www.usc.edu.au/security](http://www.usc.edu.au/security)

**Shopping centre** – located just over one kilometre away, Chancellor Park Marketplace has a supermarket, newsagency, bank, post office, medical centre, pharmacy, travel agent, bakery, retail and food outlets and a tavern.

**Social facilities** – the Uni Club is a student social space with a kitchen, showers, study spaces, notice boards, casual sports and weekly social events and activities. [www.usc.edu.au/studentactivities](http://www.usc.edu.au/studentactivities)

**Sporting facilities** – the sports precinct has a three-court indoor sports stadium, gym, outdoor courts and playing fields, athletics track, and 50-metre swimming pool. Take fitness classes, play free lunch-time sport during semester or join a sporting group such as the Barbarians rugby union club. [www.usc.edu.au/sport](http://www.usc.edu.au/sport)

**Student Central** – home to Student Administration and Student Services. Drop in for application, enrolment, fees, scholarships and graduation information as well as student support services. [www.usc.edu.au/studentcentral](http://www.usc.edu.au/studentcentral)

**Study facilities** – individual and group study spaces in the Library, open study areas around the campus, and a 24-hour student room. [www.usc.edu.au/maps](http://www.usc.edu.au/maps)

**Swimming pool** – 10-lane, 50-metre heated swimming pool. Swim with a squad or on a casual basis. [www.usc.edu.au/uscpool](http://www.usc.edu.au/uscpool)

**Teaching facilities** – lecture theatres, tutorial rooms, science labs, a nursing ward, an occupational therapy rehabilitation room, computer-based design labs, a television journalism studio, a dietetics kitchen, and dedicated teaching space for engineering and paramedic students. [www.usc.edu.au/maps](http://www.usc.edu.au/maps)

**Wireless network** – around all campus buildings. Connect to the internet and the University's online network for course materials, the library catalogue and video lectures. [www.usc.edu.au/wifi](http://www.usc.edu.au/wifi)

You're invited...

## OPEN DAY

Sunday 12 August 2012

The best way to get a feel for life on campus is to experience it.

At Open Day you can tour the campus, talk to academic, administrative and support staff and attend information sessions.



Find out more at [www.usc.edu.au/openday](http://www.usc.edu.au/openday)

Can't make it?

Visit USC at any time.  
You are welcome throughout the year.



Grab a campus map  
[www.usc.edu.au/maps](http://www.usc.edu.au/maps)



# LIVING ON THE SUNSHINE COAST

The Sunshine Coast's relaxed lifestyle is the envy of people around Australia and the world. Why sacrifice that lifestyle to study? Get the best of both worlds—enjoy the coastal culture and earn a university degree at the same time.



## LOCATION AND LIFESTYLE

If you already live on the Sunshine Coast, you know what the others are missing. The Sunshine Coast is one of Australia's fastest-growing regions. Living up to its name, it offers a warm climate year-round. You can enjoy white sandy beaches and stunning hinterland. There are great shops, cafés, restaurants and night life and you'll find plenty of healthy and fun activities on your doorstep. Best of all, many are free. And for a change of pace, Queensland's capital city of Brisbane is just over an hour's drive away.

USC's Sippy Downs campus is centrally located to all the Sunshine Coast has to offer:

**Fun attractions** — Australia Zoo, the Big Kart Track, UnderWater World, Ettamogah Pub, Aussie World, the Ginger Factory

**Dining out** — cafés, restaurants, surf clubs, wineries, pubs, cooking schools

**Shopping** — weekend markets, Sunshine Plaza, Hastings Street Noosa, Mooloolaba Esplanade, Montville, Caloundra

**Nightlife** — clubs and pubs in Mooloolaba, Noosa, Caloundra, Buderim

**Sporting clubs** — surf lifesaving, swimming, rugby union, soccer, rugby league, netball, cricket, athletics

**Outdoor activities** — swimming, scuba diving the ex-HMAS Brisbane, bush walking, four-wheel driving, kayaking, cycling, fishing, whale watching, surfing, boating, golf

**Day trips** — the Hinterland, Fraser Island, Great Sandy National Park, Noosa National Park, Sunshine Coast gallery trail, Mary Valley Rattler, Glass House Mountains

**Big events** — Noosa Festival of Surfing, Woodford Folk Festival, National Music Muster, Noosa Jazz Festival, Mooloolaba Triathlon, Rally Queensland, Caloundra Racing Carnival, Caloundra Music Festival

## ACCOMMODATION

[www.usc.edu.au/accommodation](http://www.usc.edu.au/accommodation)

You can live next to the campus, near the beach or commute from further afield (refer to locations and drive times on the page opposite).

Choose from student share accommodation in three privately-operated complexes adjacent to the University and walk to class each day:

- UniCentral [www.unicentral.net.au](http://www.unicentral.net.au)
- Varsity Apartments [www.varsityapartments.com.au](http://www.varsityapartments.com.au)
- The Village [www.thevillage.net.au](http://www.thevillage.net.au)

Varsity Apartments, UniCentral and The Village are a short walk to campus via connected pathways and are close to public transport and the local shopping centre. Accommodation rates start from \$158 per week. They each offer fully self-contained share accommodation. Facilities in the complexes include: lap pools, BBQs, tennis courts and games rooms, pay TV, internet access, secure parking, on-site caretakers, night-time security. Note: the inclusions differ with each provider, so check the websites for more details.

Or, check out rental listings in surrounding suburbs:

- USC Student Guild's accommodation register [www.usc.edu.au/accommodation](http://www.usc.edu.au/accommodation)
- Local real estate agents [www.realestate.com.au](http://www.realestate.com.au)



## TRAVEL AND TRANSPORT

[www.translink.com.au](http://www.translink.com.au)  
[www.usc.edu.au/transport](http://www.usc.edu.au/transport)  
[www.usc.edu.au/parking](http://www.usc.edu.au/parking)  
[www.usc.edu.au/maps](http://www.usc.edu.au/maps)

f Travel2USC

USC's campus at Sippy Downs is easily accessible, whatever your mode of transport. The campus is close to the Sunshine Motorway and the Bruce Highway. Parking on campus can be limited at peak times, so consider carpooling, using public transport, cycling or walking to reduce the cost. A bicycle track links the University with Mooloolaba (a 30-minute ride away), and surrounding areas.

Regular bus services operate between the University's bus interchange and coastal towns, local beaches and shopping centres. An integrated bus and rail service links Landsborough Station directly to the University.

As a full-time student, you can travel on concession fares—typically half the standard adult fare—on buses and trains across the Sunshine Coast. When looking for somewhere to live, check that you will be close to public transport. A free express USC shuttle travels to limited stops on the Coast. To access this service simply present your student ID card.

# STUDENT SUPPORT

[www.usc.edu.au/studentsupport](http://www.usc.edu.au/studentsupport)

## Academic and study support

[www.usc.edu.au/academicskills](http://www.usc.edu.au/academicskills)

Find support early and gain skills that can save you time and set you up for successful study. Orientation is the ideal time to get started.

[www.usc.edu.au/orientation](http://www.usc.edu.au/orientation)

Library and IT support is available from the Library information desk. For an introduction to library and IT services and resources, tutorials are usually offered during Orientation and the first three weeks of semester.

Academic skills advisers are on hand at Student Services to provide advice and pass on their tips for academic success. Peer advisers (trained fellow students) can also help. Book a one-on-one or group consultation to discuss assignments, learn study strategies or improve your writing, editing and proof-reading skills.

## Accommodation

[www.usc.edu.au/accommodation](http://www.usc.edu.au/accommodation)

Student accommodation complexes are located within walking distance to the University (page 8). Student Services manages an accommodation register and can also assist with issues relating to accommodation and tenancy.

## Applying and enrolling

[www.usc.edu.au/studentadministration](http://www.usc.edu.au/studentadministration)

Student Administration is your first contact point for administrative queries, and for help and advice relating to applications, enrolment, fees and graduation at USC. Staff can also advise on scholarship applications, how to defer your studies and credit transfer.

## Career guidance and employment

[www.usc.edu.au/careerconnection](http://www.usc.edu.au/careerconnection)

Whether you are currently studying, about to graduate, or just thinking about studying, Career Connection can assist in your career development. For career advice, help in setting career goals and selecting areas of study, assistance in putting together a resumé, or finding a part-time job or work experience, visit Career Connection.

## Childcare

[www.usc.edu.au/childcare](http://www.usc.edu.au/childcare)

A childcare centre is located on campus, with 66 places for children aged six weeks up to five years. An external provider operates the centre. A number of other providers are located near to the University.

## Disability and equity support

[www.usc.edu.au/disabilitysupport](http://www.usc.edu.au/disabilitysupport)

Disability support services are available—specialist staff and assistive learning technologies are on hand if, at any time, your studies are affected by disability, injury or illness. A disability or learning difficulty doesn't have to stand between you and a degree.

## Financial support

[www.usc.edu.au/financialsupport](http://www.usc.edu.au/financialsupport)

You can access financial assistance in a variety of forms (pages 12-13). Talk to staff in Student Administration about study costs and tuition fees, HECS-HELP, OS-HELP and FEE-HELP, and scholarships, bursaries and prizes. Student Services can assist with emergency loans.

## Health and wellbeing

[www.usc.edu.au/studenthealth](http://www.usc.edu.au/studenthealth) [www.usc.edu.au/sport](http://www.usc.edu.au/sport) [f USC Sport](#)

Health and wellbeing services can help in areas from finance to fitness. Free health activities run throughout the year and range from quit smoking and flu vaccination programs to meditation, dance and relaxation classes. Student Services can also assist with dispute mediation, nutrition and fitness, and the needs of the gay and lesbian community.

Counselling services are free, confidential and available to all USC students. A Psychology Clinic also operates on campus.

Sport and fitness facilities and services are there to help you stay active. USC Sport runs fitness classes, the gym, swimming pool and other athletic facilities. Or, you can get involved in university sport (page 7).

## Indigenous support

[www.usc.edu.au/indigenous](http://www.usc.edu.au/indigenous)

The Buranga Centre offers support programs and facilities for Aboriginal, Torres Strait Islander and Australian South Sea Islander students. Indigenous staff provide culturally appropriate resources and academic support such as the Indigenous Alternative Entry Program, Indigenous Orientation Week, National Indigenous Cadetship and the Indigenous Tutorial Assistance Scheme.

## International student support

[www.usc.edu.au/international](http://www.usc.edu.au/international) [f USC International](#)

If you are an international student, USC International is where you access a range of services and advice related to Student visas, compulsory overseas student health cover and other matters. English language support is also available.

## Security and safety

[www.usc.edu.au/security](http://www.usc.edu.au/security) [f USC-UniSafe](#)

USC's campus has security on site 24 hours a day, 7 days a week. After-hours vehicle escorts are available and emergency call points are located around the campus.

## Social support

[www.usc.edu.au/studentactivities](http://www.usc.edu.au/studentactivities)

[www.uscstudentguild.org.au](http://www.uscstudentguild.org.au)

Social activities run throughout the semester. Join a student club or association and even get support to start up your own. The Uni Club is a social hub open to students during semester. The USC Student Guild and Student Liaison Committee also provide select services for students.

USC's smaller campus community means support staff can provide more personalised assistance. Explore the support and services available to you.



# WHEN DO I STUDY?

## Technology and IT support

[www.usc.edu.au/online](http://www.usc.edu.au/online)

USC received a five-star rating for electronic support for students in the 2012 Good Universities Guide. Computer services can be accessed on campus or remotely. When on campus, use the 24-hour student computer laboratories, the Information Commons in the Library, or your own laptop using wireless access or wired network connections. You can also access a variety of study resources via the internet when off campus.

Stay connected to your study materials and student information with these online essentials:

**Enrol** in courses each semester and manage all of your personal information on USCCentral\*

<http://usccentral.usc.edu.au>

**The portal\*** provides access to University information, student notices, discussion groups and Blackboard course materials, including lectures, course outlines and assessment submission

<http://online.usc.edu.au>

**USC Mail\*** is your student email system, with a 10 GB mailbox, calendars and access to other services†

[www.usc.edu.au/uscmail](http://www.usc.edu.au/uscmail)

**Access online Library** resources such as full-text journals, e-books and essential readings

[www.usc.edu.au/library](http://www.usc.edu.au/library)

**Course and program information** is available online via the student handbook [www.usc.edu.au/postgraduate](http://www.usc.edu.au/postgraduate)

**The Student IT Help Desk** offers full IT support in person, over the phone or via email, while also offering introductory tutorials and an online IT Services Guide

[www.usc.edu.au/itsupport](http://www.usc.edu.au/itsupport)

**The University website** is the information hub for anything you need to know about your studies or the University

[www.usc.edu.au](http://www.usc.edu.au)

\* Login is required to access the system. Students are provided with a login when offered a study place at USC.

† These services may be subject to access restrictions.

## Academic calendar [www.usc.edu.au/calendars](http://www.usc.edu.au/calendars)

The academic calendar runs on semesters, sessions and trimesters. Some postgraduate programs are delivered on a semester basis, while others are offered in sessions or trimesters.

Sessions are shorter, and generally only apply for postgraduate study. Refer to the degree directory on page 15 to check the mode of delivery for your chosen program.

Session dates—2012	
Session 8	27 August–7 December 2012
Session 9	27 August–19 October 2012
Session 10	22 October–14 December 2012
Session 11 (Summer)	26 November 2012–25 January 2013
Session dates—2013	
Session 1	7 January–1 March 2013
Session 2	4 March–26 April 2013
Session 3	29 April–21 June 2013
Session 4	3 June –26 July 2013
Session 5	1 July–23 August 2013
Session 6	26 August–18 October 2013
Session 7	21 October–13 December 2013
Session 8 (Summer)	25 November 2013–31 January 2014
Semester dates—2013	
Semester 1, 2013	25 February–22 June 2013
Semester 2, 2013	22 July–16 November 2013
Trimester dates—2013	
Trimester 1	25 February–31 May 2013
Trimester 2	22 July–25 October 2013
Trimester 3	11 November 2013–21 February 2014

For class timetables, refer to [www.usc.edu.au/timetables](http://www.usc.edu.au/timetables)

Note: Academic calendar dates are subject to change.

\* Only some courses are offered during the Summer session.

Check your program for sessions of offer.

# STUDY COSTS

## Postgraduate coursework fees

All postgraduate coursework programs are subject to tuition fees, except where the program is offered under Commonwealth support arrangements where contributions apply.

Eligible students (Australian citizens or permanent humanitarian visa holders) can opt to borrow money from the Commonwealth government loan scheme known as FEE-HELP.

Postgraduate coursework fees depend on the faculty and school and the actual program studied. Fees are calculated by the EFTSL-value assigned to individual postgraduate coursework courses.\*

\* EFTSL stands for Equivalent Full-Time Student Load or one full-time year. To calculate the amount per course, multiply the EFTSL-value of the course by the appropriate 1.0 EFTSL amount.

As a guide, postgraduate coursework fees for 2012 were:

EFTSL				
	1.0	0.50	0.125	0.0625

### All Faculties / Schools (excluding School of Business)

	n/a	\$7,500	\$1,875	n/a
<b>Graduate Certificates</b> (Excluding Commonwealth supported programs where applicable)				
<b>Graduate Diploma</b> (Excluding Commonwealth supported programs where applicable)	\$15,000	\$7,500	\$1,875	\$937
<b>Masters</b> (Excluding Commonwealth supported programs where applicable)	\$15,000	\$7,500	\$1,875	n/a
<b>Master of Psychology (Clinical)</b> (where Commonwealth supported place is declined)	\$17,000	\$8,500	\$2,125	n/a

### School of Business

	n/a	\$10,370	\$2,592.50	\$1,295.75
<b>Graduate Certificates</b>				
<b>Graduate Diplomas</b> (Excluding pre-2009 students in BU632)	\$20,740	\$10,370	\$2,592.50	\$1,295.75
<b>Graduate Diploma in Management</b> (pre-2009 students only)	\$18,000	\$9,000	\$2,250	n/a
<b>Masters</b> (Excluding pre-2009 students in BU701)	\$20,740	\$10,370	\$2,592.50	\$1,295.75
<b>Master of Business Administration</b> (pre-2009 students only)	\$18,000	\$9,000	\$2,250	\$1,125
<b>Executive Master of Business Administration</b>	\$25,200	\$12,600	\$3,150	\$1,575

Visit the website for the most up-to-date information, and a list of rates for individual courses: [www.usc.edu.au/fees](http://www.usc.edu.au/fees)

When studying at university, you will need to budget for tuition fees, living costs and study-related expenses. But remember—a degree is an investment in your future. Your personal and professional growth, and increased earning and career potential, offer benefits that can last a lifetime.

## Loans

The Commonwealth Higher Education Loan Program (HELP) allows eligible students to defer student contributions, tuition fees and the new Student Services and Amenities Fee and repay it later through the taxation system. If, like most students, you choose to defer your contribution, there are three different student loans available:

**FEE-HELP Eligibility:** Fee-paying students (Australian citizens or those with a permanent humanitarian visa).

**HECS-HELP Eligibility:** Commonwealth-supported students (Australian citizens or those with a permanent humanitarian visa) studying an undergraduate degree or Commonwealth-supported postgraduate programs.

**SA-HELP Eligibility:** Australian citizens and permanent humanitarian visa holders may choose to defer the Student Services and Amenities fee to this loan.

Note: A HECS-HELP or FEE-HELP loan is interest free, but it is indexed against the Consumer Price Index (CPI). Other permanent visa holders and New Zealand citizens are not eligible for a HECS-HELP loan with 10 percent discount, FEE-HELP loan or SA-HELP loan, and must pay their fees up front. The HECS-HELP or FEE-HELP debt is recorded with the Australian Taxation Office.

You can access these student loans throughout your studies. You can even alter your payment options at the beginning of each semester if your circumstances change. Over your lifetime you can borrow up to the FEE-HELP limit—\$89,706 in 2012. The FEE-HELP limit is indexed on 1 January each year.

When you complete your studies and start working, you make compulsory repayments once your annual income exceeds the compulsory repayment threshold—\$49,095 in 2012/2013. Voluntary repayments may be made direct to the Australian Taxation Office and payments of \$500 or more receive a five percent deduction.

MORE INFORMATION: [studyassist.gov.au](http://studyassist.gov.au)

HECS-HELP/FEE-HELP enquiry line: 1800 020 108

## Payment options

Your choice of payment option will depend on your eligibility for government assistance.

1. Receive a Commonwealth HELP loan for the full amount to pay later<sup>^</sup>, or
2. Pay some up-front and defer the balance to a Commonwealth HELP loan to pay later<sup>^</sup>, or
3. Pay up-front, in full<sup>^</sup>

<sup>^</sup> Eligible HECS-HELP students receive a 10 percent discount on payments over \$500. Discount only applies to the amount paid.



Note: This section is not applicable to international students.



## Are study expenses tax-deductible?

[www.ato.gov.au/studyandclaim](http://www.ato.gov.au/studyandclaim)

Depending on your circumstances, if you work and study at the same time and your course relates directly to your employment, you may be eligible for a tax deduction for self-education expenses such as tuition fees, stationery and textbooks. For eligible fee-paying students, your current employment and the course you undertake must have sufficient connection for your self-education expenses to qualify as a work-related tax deduction. Taking out a FEE-HELP loan does not affect your ability to claim a tax deduction, however, you cannot claim for self-education expenses paid under HECS-HELP. For more information, visit the Australian Taxation Office.

You may also wish to discuss your study plans with your employer. Many employers value professional development and some may be willing to contribute towards the cost of your education if it relates to your work. An employer reimbursing study expenses may need to investigate any tax implications.

## Study-related expenses

Study-related expenses vary each semester, depending on the courses you study. Expenses may include:

**Textbooks and readings** – allow between \$50 and \$150 per course for the purchase of textbooks. Second-hand textbooks are often for sale—make sure the edition is still current for your classes.

[f Textbook Exchange - University of the Sunshine Coast](#)

**Stationery and photocopying** – allow around \$30 per semester for miscellaneous stationery, and \$10 per course for photocopying. You can load credit onto your student ID card to pay for copying and print jobs on campus.

**Special course expenses** – such as uniforms (eg nursing placements), safety equipment (eg lab coats, safety goggles, footwear), travel (eg field studies, clinical placement), first aid / CPR certificates / immunisation (eg nursing), Blue Card for Working with Children (eg nursing, education, social work or counselling placements).

**Student services and amenities fee (SSAF)** – from 1 January 2012, the Federal Government implemented legislation allowing universities to charge a SSAF to help fund services for students. The maximum charge for USC students in 2012 is \$260 (to be reviewed annually). Eligible students can defer their SSAF to a SA-HELP loan (refer above). [www.usc.edu.au/SAfee](http://www.usc.edu.au/SAfee)

## Living costs

As well as study-related expenses, consider your living costs such as groceries, rent, entertainment, medical/dental, telephone/internet and transport. A little pre-planning can help you to manage your money. Create a budget planner to compare your income and expenses.

## Government assistance

[www.centrelink.gov.au](http://www.centrelink.gov.au)

The Federal Government offers assistance payments and scholarships to eligible people undertaking full-time training or study. Payments are made by Centrelink, and range from general fortnightly assistance to payments specifically for helping with rent, medical expenses or other living costs.

If you are:	You may be eligible for student income support via:
A full-time student and an Australian citizen aged between 16 and 24	Youth Allowance
A full-time student and an Australian citizen aged 25 years or more	Austudy
An Indigenous Australian student	ABSTUDY
A full-time or part-time student and an Australian citizen and already receiving income support from Centrelink or the Department of Veterans' Affairs	Pensioner Education Supplement

Eligibility for Youth Allowance, Austudy and Pensioner Education Supplement is extended to all Masters by Coursework programs from 1 January 2014. In 2012 and 2013, only those students who are undertaking an approved Masters by Coursework program will qualify for these payments. A list of the approved Masters by Coursework programs can be found on the Department of Education, Employment and Workplace Relations' website at [www.deewr.gov.au/HigherEducation/Programs/StudentSupport/Pages/StudentIncomeSupport.aspx](http://www.deewr.gov.au/HigherEducation/Programs/StudentSupport/Pages/StudentIncomeSupport.aspx)

Note: This section is not applicable to international students.

## Other support

[www.usc.edu.au/student-services](http://www.usc.edu.au/student-services)

A range of financial support services are available at USC:

- If you are looking for a part-time job to help pay the bills, USC's career and employment service can help. Career Connection provides assistance with job hunting, career guidance and work experience. Search for jobs online using the Career Hub or contact Career Connection.

<http://careerhub.usc.edu.au> [www.usc.edu.au/careerconnection](http://www.usc.edu.au/careerconnection)

- Student Services delivers welfare services, including advice about financial and tenancy issues, Centrelink payments and other loan schemes.
- Student Services offers interest-free loans of up to \$500 to eligible students for purchasing textbooks and study-related materials. Emergency loans of up to \$50 can help you meet unexpected and urgent financial obligations.
- All Aboriginal and Torres Strait Islander students have the opportunity to receive Indigenous Cadetship Support (ICS)—federally funded employment assistance that matches Aboriginal and Torres Strait Islander students with employers of relevance to their degree. Australian South Sea Islanders can receive assistance through the Multicultural Affairs Tutorial Assistance Program.

[www.usc.edu.au/indigenous](http://www.usc.edu.au/indigenous)

# Steps to study

[www.usc.edu.au/postgradapply](http://www.usc.edu.au/postgradapply)

## 1 Consider your options

Postgraduate study offers flexibility and opportunities that can be best explored with advice and assistance. Use the information on page 4 to help you decide between the different types of postgraduate study and modes. Refine your selection based on your goals, commitments, experience and interest areas. Talk to University admissions and academic staff for one-on-one advice.

## 2 Choose a program

USC offers more than 40 postgraduate coursework degrees in the areas of business and information technology, communication and design, education, health, humanities and social sciences, and science and sustainability. Use the postgraduate degree directory (page 15) to make your selection.

## 3 Check admission requirements

### Postgraduate coursework program

Usual requirements are:

- an approved tertiary qualification from a recognised tertiary institution, or an equivalent qualification, and
- satisfaction of any program prerequisites or requirements as listed under each program description.

If you have considerable work experience but do not have a formal degree or qualification, you may still apply. The University may waive educational requirements if you have relevant experience and are likely to be successful at postgraduate study. For more information, contact the relevant faculty.

### English language requirements

[www.usc.edu.au/international](http://www.usc.edu.au/international)

Applicants require high-level academic English skills before commencing a postgraduate program at USC. All courses are taught in English, and all assessment items—including research theses and dissertations—must be written in English. If English is not your first language, you need to provide evidence that you meet USC's minimum English requirements. English language courses may assist in meeting this requirement. Contact USC International for more information.

## 4 Apply

### Postgraduate coursework program

Australian and New Zealand citizens and Australian permanent residents apply by downloading a copy of the relevant application form from [www.usc.edu.au/postgradapply](http://www.usc.edu.au/postgradapply) or requesting a copy from Student Administration. Completed application forms must be returned to the return address stated on the form.

International students should read important information and download application forms from [www.usc.edu.au/internationalapply](http://www.usc.edu.au/internationalapply)

### Graduate Diploma in Education programs

Students currently enrolled in, or having completed, their University of the Sunshine Coast degree programs in the last twelve months must lodge applications for admission to the Graduate Diploma in Education programs to USC Student Administration and not through QTAC. Contact Student Administration for more information.

All other Graduate Diploma in Education applicants must lodge their application through QTAC [www.qtac.edu.au](http://www.qtac.edu.au)

## 5 Accept your offer

Successful applicants will receive a letter of offer from USC. Successful applicants for the Graduate Diploma in Education programs will also receive a letter of offer from QTAC and must respond to that offer via the QTAC Current Applicant Online Service [www.qtac.edu.au](http://www.qtac.edu.au). Read and follow the instructions contained in your letter to accept your offer and commence study at USC.



### Credit transfer

USC has flexible credit transfer arrangements with other institutions. To apply for credit for prior study, complete an Application for Credit Transfer form available at [www.usc.edu.au/credit](http://www.usc.edu.au/credit)

Attach certified copies of transcripts from your previous study and detailed course outlines/descriptions of each course. Submit your application to USC Student Administration before the commencement of your first semester/session/trimester of study. International students should return their form and documentation to USC International when they make their application.



# Postgraduate degree directory

[www.usc.edu.au/postgraduate](http://www.usc.edu.au/postgraduate)

Program	Mode	Page
Graduate Certificate in Accounting	on campus	16
✕ Graduate Certificate in Business Administration	on campus; online	17
Graduate Certificate in Business Research	on campus	18
✕ Graduate Certificate in Management	on campus; online	18
Graduate Diploma in Accounting	on campus	16
✕ Graduate Diploma in Business Administration	on campus; online	17
Executive Master of Business Administration	on campus (intensive)	17
✕ Master of Business Administration	on campus; online	17
✕ Master of International Business	on campus; online	18
✕ Master of Management	on campus; online	18
✕ Master of Professional Accounting	on campus	16

## BUSINESS AND INFORMATION TECHNOLOGY

Program	Mode	Page
✕ Graduate Certificate in Communication	on campus	19
Graduate Certificate in Digital Design (Electronic Media)	on campus	20
Graduate Certificate in Digital Design (Print and Imaging)	on campus	20
Graduate Certificate in Journalism	on campus	21
✕ Graduate Certificate in Public Relations	on campus	21
✕ Graduate Diploma in Communication	on campus	19
Graduate Diploma in Digital Design (Print and Electronic Media)	on campus	20
✕ Graduate Diploma in Journalism	on campus	21
✕ Graduate Diploma in Public Relations	on campus	21
✕ Master of Communication	on campus	19

## COMMUNICATION AND DESIGN

Program	Mode	Page
Graduate Certificate in Professional Learning	on campus	23
✕ Graduate Diploma in Education (Preparatory to Year Three)	on campus	22
✕ Graduate Diploma in Education (Primary)	on campus	22
✕ Graduate Diploma in Education (Secondary)	on campus	23
✕ Master of Education	on campus	24
✕ Master of TESOL Education	on campus	24

## EDUCATION

Program	Mode	Page
Graduate Certificate in Health Promotion	on campus (multi-modal); online	25
Graduate Certificate in Nursing (General Practice)	on campus (blended)	25
Postgraduate Certificate in Nursing (Advanced Practice)	on campus (blended)	26
Graduate Diploma in Health Promotion	on campus (multi-modal)	25
Master of Advanced Nursing Practice	on campus (blended)	26
Master of Advanced Nursing Practice (Emergency Care)	on campus (blended)	26
✕ Master of Health Promotion	on campus (multi-modal)	25
✕ Master of Mental Health Nursing	on campus (blended)	26
Master of Midwifery	on campus (blended)	27
✕ Master of Psychology (Clinical)	on campus	27

## HEALTH

Program	Mode	Page
Graduate Certificate in Arts	on campus	28
Graduate Certificate in Futures Studies	on campus; online	29
✕ Graduate Diploma in Arts	on campus	28
Master of Counselling	on campus	28
Master of Counselling Practice	on campus	29
Master of Regional and Urban Planning	on campus (intensive); online	30
✕ Master of Social Work (Qualifying)	on campus	30

## HUMANITIES AND SOCIAL SCIENCES

Program	Mode	Page
Graduate Certificate in Sustainability	on campus; online	31
✕ Master of Climate Change Adaptation	on campus (intensive)	31

## SCIENCE AND SUSTAINABILITY

✕ Available to international students on a Student visa. **International students, please note:** Programs without a CRICOS provider number are not available to international students on a Student visa. For CRICOS registered programs, only the on-campus full-time study option is available to international students on a Student visa.

# BUSINESS AND INFORMATION TECHNOLOGY

## ACCOUNTING

GRADUATE CERTIFICATE IN...  
GRADUATE DIPLOMA IN...

- Pathway into the accounting profession
- Gain entry to CPA Australia and the Institute of Chartered Accountants in Australia
- Flexible course offerings help you balance your study and work commitments

### Graduate Certificate in Accounting

Full-time: not available full-time  
Part-time: 1–3 years (maximum)  
Study mode: on campus  
Total courses: 4  
Commence: Semester 1  
CRICOS code: Not available to international students on a Student visa  
Comprehensive program information and admission requirements:  
[www.usc.edu.au/BU571helors degree](http://www.usc.edu.au/BU571helors degree)

### Graduate Diploma in Accounting

Full-time: not available full-time  
Part-time: 2–4 years (maximum)  
Study mode: on campus  
Total courses: 8  
Commence: Semester 1  
CRICOS code: Not available to international students on a Student visa  
Comprehensive program information and admission requirements:  
[www.usc.edu.au/BU671](http://www.usc.edu.au/BU671)

## Upgrade your skills and gain professional accounting qualifications.

If you are a business graduate with an undergraduate degree in an area other than accounting, the Graduate Certificate or Graduate Diploma in Accounting offers a pathway into the accounting profession and provides knowledge and skills to enhance your career prospects.

The Graduate Certificate consists of four courses and articulates into the 8-course Graduate Diploma. Courses in the Graduate Certificate cover accounting, business finance and business law. In the

Graduate Diploma, you study accounting, auditing and accounting issues, business finance, and business and taxation law.

If you enrol in the Graduate Diploma, you may choose to exit after completing the first four courses with the Graduate Certificate and achieve a recognised qualification. Subject to certain time conditions, you can return to upgrade your qualification later.

### PROFESSIONAL RECOGNITION

Professional accounting bodies—such as CPA Australia and the Institute of Chartered Accountants in Australia—generally accept four specific business undergraduate courses plus the eight courses of the Graduate Diploma for associate membership.

**Offered by:** Faculty of Arts and Business, School of Business.

## PROFESSIONAL ACCOUNTING

MASTER OF...

- Build on your undergraduate study to pursue an accounting career
- Become an associate member of CPA Australia, the Institute of Chartered Accountants in Australia, and the Institute of Public Accountants
- Apply for scholarships to help meet your study expenses

### Master of Professional Accounting

Full-time: 2 years (minimum)  
Part-time: 6 years (maximum)  
Study mode: on campus  
Total courses: 12  
Commence: Semester 1 or Semester 2  
CRICOS code: 059557J  
Comprehensive program information and admission requirements:  
[www.usc.edu.au/BU771](http://www.usc.edu.au/BU771)



## The MPA introduces you to business with a focus on accounting.

The program enables you to gain recognition by the two peak professional accounting bodies in Australia—CPA Australia and the Institute of Chartered Accountants in Australia.

You develop knowledge of concepts fundamental to successful business operation including economics, business law, research methods, and information and communications technology (ICT). You also gain specialised knowledge of accounting topics such as auditing, corporate and management accounting, taxation law and business finance.

Through a range of in-depth courses, you acquire a deeper understanding of the function of accounting in today's complex business environment. You discover the basic principles of taxation law, and the nature, scope and operation of different business structures.

You learn a range of analytic tools for costing, decision-making, planning and control. You examine contemporary accounting and disclosure issues from inception and acquisition, to trading and termination of a company. You gain a firm foundation in ICT, and explore the specific application of ICTs to accounting.

Delivery includes face-to-face lectures, tutorial participation and assessment.

### PROFESSIONAL RECOGNITION

Graduates of the MPA program will meet the educational requirements for admission as an associate member of CPA Australia, the Institute of Chartered Accountants in Australia, and the Institute of Public Accountants. To gain full membership, you must complete the requirements of the chosen professional body's qualification program.

**Offered by:** Faculty of Arts and Business, School of Business.

## BUSINESS ADMINISTRATION

GRADUATE CERTIFICATE IN...  
GRADUATE DIPLOMA IN...  
MASTER OF...

- MBA—the international standard for graduate business qualifications
- Innovative and flexible approaches to learning
- Enjoy the freedom and flexibility of studying online

### Broaden your managerial skills to prepare for senior management roles.

In today's business world, the demands of management require you to have an increasing range of skills in all facets of business. Graduate training in management and business administration can complement and enhance the skills you have gained in the workplace, or add value to existing qualifications—fast tracking your career ambitions.

USC's business administration programs offer you innovative and flexible approaches to learning, including the opportunity to study online. Courses explore current business issues and offer you network-building opportunities. You learn to integrate knowledge and skills across functions and disciplines, and focus on the application of theory and execution of practice.

The 4-course Graduate Certificate in Business Administration introduces you to fundamental areas

of business administration. Courses cover the key functional areas of an organisation and provide you with knowledge and skills in the key discipline areas. It is also a entry pathway if you wish to complete the Graduate Diploma in Business Administration but do not hold a bachelor degree.

The 8-course Graduate Diploma builds on the Graduate Certificate and articulates into the Master of Business Administration. In the Graduate Diploma, you extend the skill-focused study and practical work to develop your professional understanding and problem-solving abilities. Depending on your interests, you can choose to study courses in decision-making, economics, marketing, management, law, ethics or informatics.

The suite culminates with a 12-course MBA, which is now the international standard for graduate business qualifications. As an MBA student, you develop managerial skills in critical thinking and research and analysis through individual and team-based work. You complete six required courses covering the fundamental areas of business administration and choose six elective courses, which allow you to focus on specific interest areas.

For added flexibility, if you enrol in the Graduate Diploma you may choose to exit after completing the first four courses with the Graduate Certificate and achieve a recognised qualification. Similarly, if you enrol in the masters program, you may choose to exit after completing the first eight courses and gain the Graduate Diploma. Subject to certain time conditions, you can return to upgrade your qualification later.

**Offered by:** Faculty of Arts and Business, School of Business.

#### Graduate Certificate in Business Administration

Full-time: 4 months (minimum)

Part-time: 2 years (maximum)

Study mode: on campus; online

Total courses: 4

Commence: Trimester 1, 2 or 3

CRICOS code: 067674D

Comprehensive program information and admission requirements: [www.usc.edu.au/BU510](http://www.usc.edu.au/BU510)

#### Graduate Diploma in Business Administration

Full-time: 8 months (minimum)

Part-time: 4 years (maximum)

Study mode: on campus; online

Total courses: 8

Commence: Trimester 1, 2 or 3

CRICOS code: 067675C

Comprehensive program information and admission requirements: [www.usc.edu.au/BU610](http://www.usc.edu.au/BU610)

#### Master of Business Administration

Full-time: 1 year (minimum)

Part-time: 6 years (maximum)

Study mode: on campus; online

Total courses: 12

Commence: Trimester 1, 2 or 3

CRICOS code: 066777E

Comprehensive program information and admission requirements: [www.usc.edu.au/BU710](http://www.usc.edu.au/BU710)

## BUSINESS ADMINISTRATION

EXECUTIVE MASTER OF...

- Intensive delivery meets the needs of the busy executive
- Enhance your qualifications to prepare for senior management roles
- Seize the opportunity to network with peers and industry leaders

### As a busy executive, you can upgrade your qualifications via intensive weekend classes.

The Executive Master of Business Administration (EMBA) allows you to advance your knowledge in a unique format where students progress through the program with the same group of peers. The program focuses on managers who are capable of intensive and focused study, but are time-poor. Only EMBA students with significant work experience attend the classes, with delivery through intensive weekend workshops once a month for two years.

The EMBA is a professionally oriented program of study that develops your understanding and problem-solving ability in business and management issues relevant to both public and private sector organisations. You have the opportunity to enhance your strategic thinking, leadership skills and competencies, in areas such as marketing, accounting, financial management and economics. The EMBA integrates skills across key business areas, and involves reflection and learning from real examples of business strategy and its implementation.



#### Executive Master of Business Administration

Duration: 2 years

Study mode: on campus (intensive)

Total courses: 24

Commence: Semester 1 in the first year of study and continues each month until December. After a break at the end of the year, the EMBA recommences in Semester 1. There is only one intake each year.

CRICOS code: Not available to international students on a Student visa

Comprehensive program information and admission requirements: [www.usc.edu.au/BU791](http://www.usc.edu.au/BU791)

The EMBA gives you an opportunity to network with peers and industry leaders, and enables you to develop business and industry contacts. Working with a cohort lays the foundations for a powerful learning environment, and the program uses computer-based simulations and problem-solving activities to challenge skills, attitudes and beliefs. Teaching staff are from both USC and external organisations.

The EMBA is delivered on campus at USC on one weekend each month across approximately 22 months. For the assigned weekends, you will need to be available to attend classes. The EMBA program commences in Semester 1 for the first year of study, and continues each month until December. After a

break at the end of the year, the program will recommence in Semester 1. Each weekend of delivery combines two or three courses so that delivery of a single course is not concentrated in one weekend. In addition, exams are conducted progressively throughout the scheduled weekends, not at a separate time. Due to this intensive delivery mode, you are able to gain a real sense of achievement and progress. To be considered for admission, you must have at least five years senior managerial work experience and attend an interview. For more information, visit [www.usc.edu.au/BU791](http://www.usc.edu.au/BU791)

**Offered by:** Faculty of Arts and Business, School of Business.

## BUSINESS RESEARCH

### GRADUATE CERTIFICATE IN . . .

- Develop advanced research skills
- Earn admission to a PhD or Master by Research
- Gain a postgraduate qualification in as little as four months

#### Graduate Certificate in Business Research

Full-time: 4 months

Part-time: 2 years (maximum)

Total courses: 4

Study mode: on campus

Commence: Semester 1

CRICOS code: Not available to international students on a Student visa

Comprehensive program information and admission requirements: [www.usc.edu.au/BU508](http://www.usc.edu.au/BU508)

## Take the next step towards a business research degree.

If you are a Master by coursework student or graduate, the Graduate Certificate in Business Research offers a clear pathway to gaining entry into a research higher degree program.

The Graduate Certificate consists of four courses, covering research concepts, design and methodology. The program provides an appropriate qualification and research training for students wishing to pursue a higher degree by research but do not meet the usual entry requirements of a research-based Master or Honours qualification.

The program ensures that students undertaking higher studies will have developed the necessary research skills.

The Graduate Certificate also serves as a gauge for both students and the University to assess the candidate's potential suitability for higher research degree studies, and gives both student and potential supervisors the opportunity to more fully develop proposed research topics.

**Offered by:** Faculty of Arts and Business, School of Business.



## INTERNATIONAL BUSINESS

### MASTER OF . . .

- Examine how firms operate and succeed in international business
- Explore the cultural dimensions of international management
- Learn to manage businesses strategically in a changing global environment

## Learn to understand the new realities of international business.

The Master of International Business is a contemporary flagship degree of the School of Business. It equips you with the international business skills you need to manage in a global environment of continuous change. The program aims to exploit existing opportunities in the global environment and to explore new and demanding business challenges.

As a graduate, you can expect to be in demand for positions in export/import firms, foreign affairs and government departments, human resource management such as repatriation and training, international liaison positions, logistics management,

marketing and management consultancies, and purchasing and trade positions. The degree is ideal for those aiming to work in global corporations.

#### PROFESSIONAL RECOGNITION

As a graduate, you may be eligible for membership of the Australian Institute of Management. All students may also apply for membership of the Australian and New Zealand Academy of Management, the Academy of International Business, and the Australian and New Zealand International Business Academy.

**Offered by:** Faculty of Arts and Business, School of Business.

#### Master of International Business

Full-time: 8 months

Part-time: 16 months

Total courses: 8

Study mode: on campus, online

Commence: Trimester 1, 2 or 3

CRICOS code: 069960D

Comprehensive program information and admission requirements: [www.usc.edu.au/BU782](http://www.usc.edu.au/BU782)

## MANAGEMENT

### GRADUATE CERTIFICATE IN . . .

### MASTER OF . . .

- Gain a postgraduate qualification in as little as four months for the Graduate Certificate or eight months for the Masters
- Develop your competencies in business decision-making
- Examine ways to manage key issues for businesses, including marketing and organisational behaviour

## Make the decision to become an effective manager now.

The 4-course Graduate Certificate in Management is an introduction to graduate-level study that enables you to build your competency in four main areas of management. Learn to use accounting, economics and marketing data for informed decision-making and examine ways to manage organisational behaviour.

The Graduate Certificate is ideal if your undergraduate degree is not in business, commerce, management or similar, and you seek an introduction to business and management at the graduate level. It is also an

entry pathway if you wish to complete a Master of International Business but do not hold a bachelor degree in business or equivalent.

The 8-course Master of Management is an internationally recognised coursework master degree in business. It provides an alternative to the MBA if you do not have the work experience required for MBA admission. With two entry pathways, the program offers a broad spectrum of business and management courses and encourages you to deepen your knowledge beyond that gained in your previous study.

Build your competencies in business decision-making; analysis of business problems and situations; written and oral communication; creativity, questioning and investigation; working individually and in teams; adoption of a global outlook; and moral and social responsibility.

Gain an in-depth understanding of general business management principles and their application both locally and globally. Develop specific skills required to succeed in today's job market and develop the capacity to work as an effective manager within public and private sector organisations regionally, internationally and globally. On completing the Master of Management, you are equipped to apply management and business theory in a modern business situation.

#### Graduate Certificate in Management

Full-time: 4 months

Part-time: 2 years (maximum)

Study mode: on campus; online

Total courses: 4

Commence: Trimester 1

CRICOS code: 065611B

Comprehensive program information and admission requirements: [www.usc.edu.au/BU533](http://www.usc.edu.au/BU533)

#### Master of Management

Full-time: 8 months

Part-time: 4 years (maximum)

Study mode: on campus; online

Total courses: 8

Commence: Trimester 1 or Trimester 2

CRICOS code: 065612A

Comprehensive program information and admission requirements: [www.usc.edu.au/BU733](http://www.usc.edu.au/BU733)

**Offered by:** Faculty of Arts and Business, School of Business.

# COMMUNICATION AND DESIGN

## COMMUNICATION

GRADUATE CERTIFICATE IN...  
GRADUATE DIPLOMA IN...  
MASTER OF...

- Enhance your writing and communication skills
- Discover the nuances of journalistic reporting
- Create a portfolio of published works

### Graduate Certificate in Communication

Full-time: 6 months (minimum)  
Part-time: 2 years (maximum)  
Study mode: on campus  
Total courses: 4

Commence: Semester 1 or Semester 2  
CRICOS code: 058562J

Comprehensive program information and admission requirements:  
[www.usc.edu.au/AR541](http://www.usc.edu.au/AR541)

### Graduate Diploma in Communication

Full-time: 1 year (minimum)  
Part-time: 4 years (maximum)  
Study mode: on campus  
Total courses: 8

Commence: Semester 1 or Semester 2  
CRICOS code: 058564G

Comprehensive program information and admission requirements:  
[www.usc.edu.au/AR641](http://www.usc.edu.au/AR641)

## Develop your writing proficiency and improve your job prospects.

The Graduate Certificate or Graduate Diploma in Communication offers you an opportunity to develop skills in contemporary communication. The programs will be attractive to professionals in the corporate or government sectors looking to upgrade their qualifications and expertise in a short time, and gain a qualification that has relevance, currency and credibility. The ability to write and communicate well is becoming increasingly important. Employers are looking for people with the ability to write and communicate in an effective, efficient and lucid fashion. These programs impart knowledge and skills for both professional and business writing, and written communication in general.

The coursework-based Master of Communication is for those who want to develop or enrich their expertise in the rapidly expanding field of professional communication. It is ideal if you have studied in another discipline and wish to make a transition to journalism, professional

writing, editing or public relations. Many media organisations place a premium on recruiting staff with degrees in fields such as science, law and business that also have postgraduate qualifications in relevant fields of communication.

You have the opportunity to specialise in the broad area of Communication Studies or the specific fields of Journalism, Public Relations or Creative Writing. Overall, you undertake the equivalent of 12 courses. After completing eight courses, five of which are electives, you complete a research project in which you choose to either research for and write a thesis of 16,000 to 20,000 words, or complete an industry-based research project.

The research component involves individualised research relevant to your key area/s of interest as a professional communicator. It is equivalent in value to four courses.

You attend lectures and tutorials with undergraduate students but learning and assessment tasks are

### Master of Communication

Full-time: 1–1.5 years (maximum)  
Part-time: 2–3 years (maximum)

Study mode: on campus  
Total courses: 12 (equivalent)

Commence: Semester 1 or Semester 2  
CRICOS code: 057539E

Comprehensive program information and admission requirements:  
[www.usc.edu.au/AR841](http://www.usc.edu.au/AR841)

commensurate with a postgraduate standing. Because of this standing, you will be exempt from many course prerequisites although you must complete compulsory courses in your selected areas of specialisation. Research components of the program must be approved by the Program Leader, and are based on the availability of supervisory staff with relevant expertise.

Offered by: Faculty of Arts and Business, School of Communication.



## DIGITAL DESIGN

GRADUATE CERTIFICATE IN...

GRADUATE DIPLOMA IN...

- Design workable solutions to new media communication challenges
- Create animation, video, sound and interactive content for web-based applications
- Learn to support advanced interactivity with programming and scripting

Acquire new knowledge or upgrade existing skills to broaden your career options.

USC's digital design programs are ideal for those who have completed an undergraduate degree or its equivalent in a discipline other than digital design and multimedia. They offer interactive design studies equivalent to those available within the higher levels of a bachelor degree.

The Graduate Certificate in Digital Design (Electronic Media) is a qualification that is industry relevant and provides practical skills. Learn to design and develop web and screen-based media solutions for a range of professional and commercial applications. Courses introduce a range of design and software skills related to web design, digital video and sound production, vector-based animation and interactive design. Using traditional and digital design techniques to create effective solutions to new media communication challenges, you undertake projects addressing information architecture, navigation design and content production using industry-standard software. Projects include design for online learning, visual communication, entertainment, sales and advertising.

In the Graduate Certificate in Digital Design (Print and Imaging) you develop or enhance your skills in the print-related digital media industries. Learn to use a range of software for digital graphic design and desktop publishing, producing work and promotional materials for your personal portfolio and a gallery exhibition at the University. Develop your practical skills working on industry-relevant projects, including concept development, marketing strategies, corporate design, logo development, packaging, typography, media placement and press production. This is an excellent way to explore the range of creative design possibilities available through digital imaging applications.

The Graduate Diploma in Digital Design (Print and Electronic Media) comprises both of the above graduate certificates undertaken either sequentially or simultaneously. This pathway gives you the opportunity to broaden your studies to encompass both print and electronic media. You can apply units completed under either graduate certificate toward the higher award if you decide to upgrade your qualification. In studying for the Graduate Diploma, you develop a broader range of practical and creative skills relevant to the creative and technical demands of today's design profession.

**Offered by:** Faculty of Arts and Business, School of Communication.



### Graduate Certificate in Digital Design (Electronic Media)

Full-time: not available full-time

Part-time: 2–4 years (maximum)

Study mode: on campus

Total courses: 4

Commence: Semester 1

CRICOS code: Not available to international students on a Student visa

Comprehensive program information and admission requirements:  
[www.usc.edu.au/AR512](http://www.usc.edu.au/AR512)

### Graduate Certificate in Digital Design (Print and Imaging)

Full-time: not available full-time

Part-time: 2–4 years (maximum)

Study mode: on campus

Total courses: 4

Commence: Semester 1

CRICOS code: Not available to international students on a Student visa

Comprehensive program information and admission requirements:  
[www.usc.edu.au/AR511](http://www.usc.edu.au/AR511)

### Graduate Diploma in Digital Design (Print and Electronic Media)

Full-time: not available full-time

Part-time: 2–4 years (maximum)

Study mode: on campus

Total courses: 8

Commence: Semester 1

CRICOS code: Not available to international students on a Student visa

Comprehensive program information and admission requirements:  
[www.usc.edu.au/AR611](http://www.usc.edu.au/AR611)

## JOURNALISM

GRADUATE CERTIFICATE IN...  
GRADUATE DIPLOMA IN...

- Enhance your writing and communication skills
- Discover the nuances of journalistic reporting
- Create a portfolio of published works

### Graduate Certificate in Journalism

Full-time: 6 months (minimum)  
Part-time: 2 years (maximum)  
Study mode: on campus  
Total courses: 4  
Commence: Semester 1 or Semester 2  
CRICOS code: Not available to international students on a Student visa  
Comprehensive program information and admission requirements:  
[www.usc.edu.au/AR543](http://www.usc.edu.au/AR543)

### Graduate Diploma in Journalism

Full-time: 1 year (minimum)  
Part-time: 4 years (maximum)  
Study mode: on campus  
Total courses: 8  
Commence: Semester 1 or Semester 2  
CRICOS code: 058566E  
Comprehensive program information and admission requirements:  
[www.usc.edu.au/AR643](http://www.usc.edu.au/AR643)



## Develop your writing proficiency and improve your job prospects.

The Graduate Certificate and Graduate Diploma in Journalism offer an opportunity to develop your skills in contemporary journalism, and gain a qualification that has relevance, currency and credibility. The programs are ideal for professionals in corporate or government sectors who wish to upgrade their qualifications and expertise in a short time.

In today's job market, the ability to write and communicate well has become increasingly important. USC's journalism programs impart both knowledge and skills relevant for professional and business writing, and written communication in general. You develop competencies in research, writing, editing, and production; and examine the general communications required of journalists and the different media—print, broadcast and the internet.

Courses in the Graduate Certificate provide you with a solid introduction to journalism. Learn editing techniques across different media, participate in

the online publishing process, build a portfolio of published articles, and learn basic photojournalism skills. You also examine the foundations of journalism, including its history and social and political relevance.

The Graduate Diploma in Journalism builds on the 4-course Graduate Certificate and you can apply the units completed to the higher award. Using your electives, you can choose to extend your expertise into areas such as computer-assisted reporting, online journalism, politics and the media, feature writing or even research. To further your studies, the 8-course Graduate Diploma articulates into the Master of Communication (refer to page 15). If you complete the Graduate Diploma in Journalism, you may apply for up to 8 courses (96 units) credit towards the coursework component of the Master of Communication.

**Offered by:** Faculty of Arts and Business, School of Communication.

## PUBLIC RELATIONS

GRADUATE CERTIFICATE IN...  
GRADUATE DIPLOMA IN...

- Learn to create strategic communication campaigns
- Find out how to succeed in the competitive field of public relations
- Develop essential writing, tactical and analytical skills

### Graduate Certificate in Public Relations

Full-time: 6 months  
Part-time: 2 years (maximum)  
Study mode: on campus  
Total courses: 4  
Commence: Semester 1 or Semester 2  
CRICOS code: 065371B  
Comprehensive program information and admission requirements:  
[www.usc.edu.au/AR513](http://www.usc.edu.au/AR513)

### Graduate Diploma in Public Relations

Full-time: 1 year (minimum)  
Part-time: 4 years (maximum)  
Study mode: on campus  
Total courses: 8  
Commence: Semester 1 or Semester 2  
CRICOS code: 058893A  
Comprehensive program information and admission requirements:  
[www.usc.edu.au/AR613](http://www.usc.edu.au/AR613)

## Build your skills in contemporary public relations.

Public relations specialists assist business, government and non-profit organisations to develop and maintain mutually beneficial relationships with clients, consumers, media, financial donors, employees and other stakeholders. These programs provide the theoretical understanding and practical skills to succeed in this competitive field. They are ideal for those who hold an undergraduate degree or its equivalent in an area different from public relations.

Interpersonal skills involving negotiation, and the ability to gain cooperation, are an essential foundation for advanced technical and strategic

skills in public relations. Complete the 4-course Graduate Certificate to improve your written and oral communication skills, learn to design and manage large-scale events, and gain an understanding of the media industries. To continue your studies, the Graduate Certificate articulates into the 8-course Graduate Diploma and you can apply the units completed to the higher award.

The Graduate Diploma in Public Relations is ideal for professionals in corporate or government sectors looking to upgrade their qualifications and expertise in a short time and it is currently under consideration by the Public Relations Institute

of Australia (PRIA) for accreditation. You gain hands-on workplace experience through two work integrated learning units—a major event project and an internship. In the Graduate Diploma, use your electives to specialise in an area of interest. Select courses in internal communications, crisis and issues management, or advertising; or undertake a research project on a particular aspect of public relations that interests you.

**Offered by:** Faculty of Arts and Business, School of Communication.

# EDUCATION

## EDUCATION (PREPARATORY TO YEAR 3)

### GRADUATE DIPLOMA IN...

- Teach in a Prep to Year 3 classroom
- Link theory and practice with professional experience in schools
- This program is offered face-to-face on campus as it is essential for students to interact with fellow students and academics to develop their classroom teaching skills

## Achieve professional qualifications required for teacher registration.

In this program you examine theories and models of teaching and learning relevant to children from the Preparatory school year through to Year 3.

Studies focus on the implementation and evaluation of differentiated teaching strategies and formative assessment tasks in a way that is responsive to the diverse nature of early learners.

You translate key theories in children's social, physical and academic development into effective teaching and learning practice, and explore play-based and creative approaches to the teaching of Key Learning Areas such as literacy, numeracy, science, and technology.

Graduates are eligible to apply for teacher registration with the Queensland College of Teachers.

**Offered by:** Faculty of Science, Health, Education and Engineering, School of Science, Education and Engineering.

### Graduate Diploma in Education (Preparatory to Year Three)

QTAC code: 017181

OP/Rank for 2012 entry: GPA requirement

Full-time: 1 year

Part-time: 2 years

Study mode: on campus

Total courses: 10

Commence: Semester 1 only

Prerequisites: Completion of a non-education undergraduate degree, with a minimum GPA of 4.0 from a recognised tertiary institution. In addition, applicants must satisfy the discipline study requirements of sufficient breadth across a range of Key Learning Areas including: the arts, social science, English, maths, science, health and physical education, technology and languages.

Recommended prior study: English

Recommended prior preparation: Criminal History check, Suitability Card (Blue Card CCYPCG)

CRICOS code: 075079A

Comprehensive program information and admission requirements: [www.usc.edu.au/ED602](http://www.usc.edu.au/ED602)

## EDUCATION (PRIMARY)

### GRADUATE DIPLOMA IN...

- Teach in a Preparatory to Year 7 classroom
- Link theory and practice with professional experience in schools
- This program is offered face-to-face on campus as it is essential for students to interact with fellow students and academics to develop their classroom teaching skills

### Graduate Diploma in Education (Primary)

QTAC code: 017281

OP/Rank for 2012 entry: GPA requirement

Full-time: 1 year

Part-time: 2 years

Study mode: on campus

Total courses: 10

Commence: Semester 1 only

Prerequisites: Completion of a non-education undergraduate degree, with a minimum GPA of 4.0 from a recognised tertiary institution. In addition, applicants must satisfy the discipline study requirements of sufficient breadth across a range of Key Learning Areas including: the arts, social science, English, maths, science, health and physical education, technology and languages.

Recommended prior study: English

Recommended prior preparation: Criminal History check, Suitability Card (Blue Card CCYPCG)

CRICOS code: 075078B

Comprehensive program information and admission requirements: [www.usc.edu.au/ED603](http://www.usc.edu.au/ED603)



## Achieve professional qualifications required for teacher registration.

In this program you learn to design and implement engaging learning and teaching strategies targeting primary aged children from the Preparatory year through to Year 7.

Coursework explores curriculum and learning theory in practical ways that encourage pre-service teachers to build a supportive school and classroom environment.

You actively engage in the challenges of inclusive education and develop differentiated teaching,

learning and assessment practices across the Key Learning Areas taught in the primary classroom such as the arts, maths, English and science.

Graduates are eligible to apply for registration with the Queensland College of Teachers.

**Offered by:** Faculty of Science, Health, Education and Engineering, School of Science, Education and Engineering.



## EDUCATION (SECONDARY)

GRADUATE DIPLOMA IN...

- Teach in a Year 7 to Year 12 classroom
- Link theory and practice with professional experience in schools
- This program is offered face-to-face on campus as it is essential for students to interact with fellow students and academics to develop their classroom teaching skills

### Achieve professional qualifications required for teacher registration.

This program focuses on the application of innovative and evidence-based teaching practices to create an engaging classroom for learners in Years 7-12.

You engage with key curriculum documents and instructional methods in two teaching areas taught in Queensland secondary schools.

Core studies include theories of learning, assessment and evaluation principles, the application of information communication technologies in the classroom, literacy, numeracy, and effective management of the secondary learning environment.

Graduates are eligible to apply for teacher registration with the Queensland College of Teachers.

**Offered by:** Faculty of Science, Health, Education and Engineering, School of Science, Education and Engineering.



### Graduate Diploma in Education (Secondary)

QTAC code: 017381

OP/Rank for 2012 entry: GPA requirement

Full-time: 1 year

Part-time: 2 years

Study mode: on campus

Total courses: 10

Commence: Semester 1 or Semester 2

**Prerequisites:** Completion of a non-education undergraduate degree, with a minimum GPA of 4.0 from a recognised tertiary institution. In addition, applicants must satisfy the discipline study requirements of at least one-third of a degree in a nominated first teaching area and one-sixth of a degree in a nominated second teaching area.

**Discipline studies suitable for secondary include:**

**Teaching Area One:** accounting; agricultural science; ancient history; biology; business, chemistry; Chinese; dance; drama; English; film, television and new media; French; geography; German; Indonesian; health and physical education; history; information and communications technology; integrated sciences; Italian; Japanese; mathematics; modern history; music; physics; Spanish; study of religion; visual arts.

**Teaching Area Two:** business, Chinese; dance; drama; English; French; German; geography; health and physical education; history; Indonesian; information and communications technology; Italian; Japanese; mathematics; music; science; Spanish; social science (geography/history); study of religion; visual arts.

**Recommended prior study:** English

**Recommended prior preparation:** Criminal History check, Suitability Card (Blue Card CCYPCG)

CRICOS code: 075080G

Comprehensive program information and admission requirements: [www.usc.edu.au/ED604](http://www.usc.edu.au/ED604)



## REQUIREMENTS FOR PLACEMENTS

The Commission for Children and Young People Act (2000 and 2005) applies to all pre-service teachers who will be working with children/students under the age of 18 in Queensland settings as a component of their program of pre-service education. The Commission issues Blue Cards once it has carried out the Working with Children Check to see if a person is eligible. A positive notice and a Blue Card will be issued to those deemed eligible.

To avoid processing delays, you are encouraged to apply for a Blue Card as soon as you have accepted your offer. Blue Cards are free-of-charge for Education students when you apply through USC's Office of Professional Learning (Level 1, H Building).

Note: If you do not possess a current Blue Card, you will be unable to complete the professional experience component of your program and you will be unable to meet graduation requirements.

For more information on Blue Cards, and how to apply, visit [www.ccypcg.qld.gov.au/bluecard](http://www.ccypcg.qld.gov.au/bluecard)



## PROFESSIONAL LEARNING

GRADUATE CERTIFICATE IN...

- Place your research in context and develop a research question
- Engage with a collaborative learning community
- Generate leadership and change in your professional field

### Graduate Certificate in Professional Learning

Full-time: not available full-time

Part-time: 1-2 years (maximum)

Study mode: on campus (blended)

Total courses: 4

Commence: Semester 1 or Semester 2

CRICOS code: Not available to international students on a Student visa

Comprehensive program information and admission requirements: [www.usc.edu.au/ED501](http://www.usc.edu.au/ED501)

### Learn to engage with curriculum development.

The Graduate Certificate in Professional Learning offers practising educators, those seeking employment, and educators returning to the workforce, a series of learning opportunities to engage in a critical orientation to professional learning. It brings educators together in a collaborative learning community to enhance their leadership and engagement in curriculum development, evaluation, teaching, learning and assessment. To further your studies, the Graduate Certificate articulates into the Master of Education, and you may apply the units completed to the higher award.

**Offered by:** Faculty of Science, Health, Education and Engineering, School of Science, Education and Engineering.

## EDUCATION

### MASTER OF...

- Choose a research or coursework pathway to support your engagement in higher education
- The coursework option provides opportunities to engage with theory and link it directly to your educational practice
- The research option offers access to research training and an opportunity to engage in the development of a guided research project

#### Master of Education

Full-time: 1 year

Part-time: 2 years

Study mode: on campus

Total courses: 8

Commence: Semester 1 or Semester 2

CRICOS code: 073276A

Comprehensive program information and admission requirements:  
[www.usc.edu.au/ED704](http://www.usc.edu.au/ED704)

### Enhance your educational practice.

The Master of Education offers you the opportunity to develop advanced knowledge and understanding in education, research skills, and a strong foundation for furthering your career as an educational professional.

The program is aimed at practising professionals working as educators in primary or secondary schools, early childhood, higher education and adult and vocational education. You can choose to follow a coursework option for professional development or undertake a research project.

Candidates for the award of Master of Education are normally required to hold either:

- an appropriate 4-year bachelor degree or equivalent from a recognised tertiary institution focused on education  
or
- a 3-year bachelor degree from a recognised tertiary institution or equivalent, PLUS at least one year of appropriate education-based professional experience

Refer also to the University's English language proficiency requirements.

**Offered by:** Faculty of Science, Health, Education and Engineering, School of Science, Education and Engineering.

## TESOL EDUCATION

### MASTER OF...

- Enhance your professional practice and improve your career opportunities
- Benefit from growing market demands for English teaching skills
- Note: This program does not accredit graduates for teacher registration in Queensland

### Broaden your prospects in teaching English as a second language.

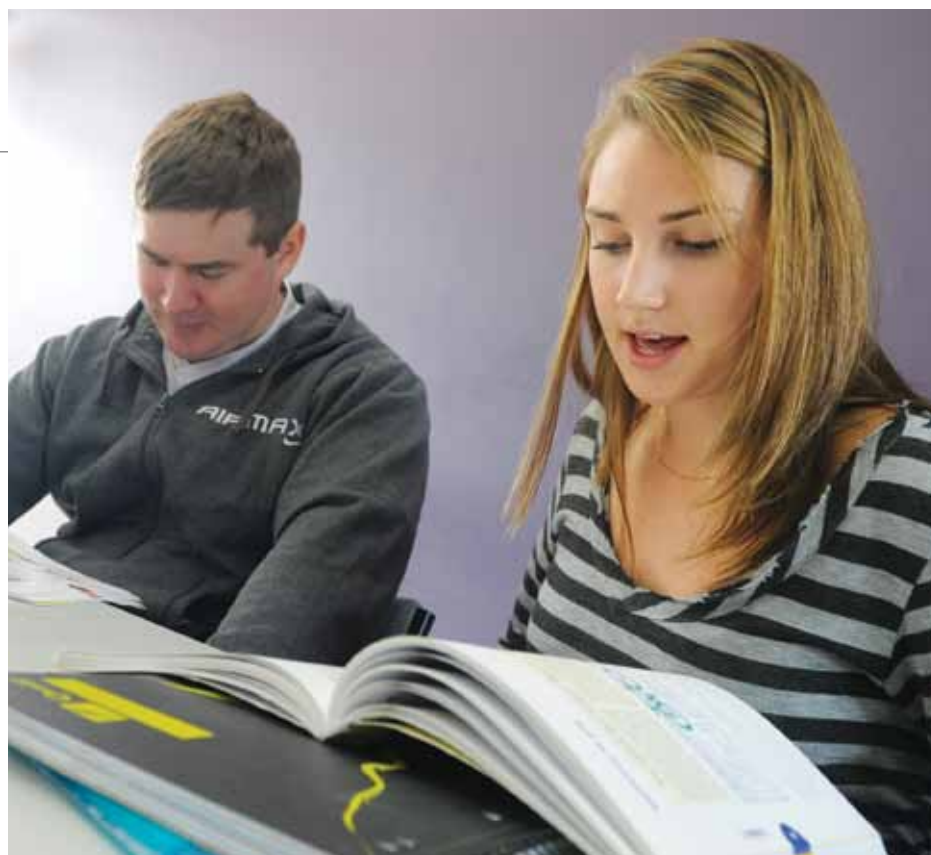
The Master of TESOL Education is a professional development program, particularly for teachers of English as a Second Language (ESL). It is also designed to cater for non-native speaking teachers of English.

The program provides a thorough grounding in the theory and practice of Teaching English to Speakers of Other Languages (TESOL). You are encouraged to relate your own teaching experience and situation to your coursework, and the curriculum seeks to develop and extend the central skills for successful teaching and learning of English as a second or foreign language.

You are introduced to major aspects of second language acquisition theories, and examine different factors that influence the successful learning of another language. You deepen your understanding of the structure and the use of the English language, and learn how to incorporate communicative teaching methodologies, intercultural language learning principles and interlanguage phonology into your teaching practice.

Courses feature small-group face-to-face teaching that develops your abilities to exercise critical thinking, present information and arguments effectively, and use public presentation skills. The personal interaction skills you develop are essential in language teaching. You are assessed through a combination of assignments, peer-teaching activities and project work.

A student entering the Master program will be required to hold a 4-year degree (or equivalent) in Education, Languages or Linguistics, from a recognised university and relevant teaching experience. Applicants are required to have either:



- a minimum of 300 hours of communicative language teaching experience witnessed by an authorised representative of a recognised English language teaching institute (eg Director of Studies)  
or
- have demonstrated suitability through a Skype or teleconference interview which assesses: teaching experience (preferably TESOL, but related fields will be considered); knowledge of approaches to teaching in general and TESOL in particular; ability to reflect upon prior teaching experience

Entry by non-graduates who have extensive relevant industry experience may be considered on a case-by-case basis by the Dean or Associate Professor in Education, Faculty of Science, Health, Education and Engineering.

**Offered by:** Faculty of Science, Health, Education and Engineering, School of Science, Education and Engineering.

#### Master of TESOL Education

Full-time: 1 year

Part-time: 2 years

Study mode: on campus

Total courses: 8

Commence: Semester 1 or Semester 2

CRICOS code: 072984C

Comprehensive program information and admission requirements:  
[www.usc.edu.au/ED703](http://www.usc.edu.au/ED703)

# HEALTH

## HEALTH PROMOTION

GRADUATE CERTIFICATE IN...  
GRADUATE DIPLOMA IN...  
MASTER OF...

- Broaden your understanding of health and wellbeing
- Qualify to work as a health promotion practitioner
- Flexible study modes help you manage your commitments



### Graduate Certificate in Health Promotion

Full-time: not available full-time  
Part-time: 1–2 years (maximum)  
Study mode: on campus (multi-modal); online  
Total courses: 4  
Commence: Semester 1 or Semester 2  
CRICOS code: Not available to international students on a Student visa  
Comprehensive program information and admission requirements:  
[www.usc.edu.au/SC511](http://www.usc.edu.au/SC511)

### Graduate Diploma in Health Promotion

Full-time: 1 year  
Part-time: 2–4 years (maximum)  
Study mode: on campus (multi-modal); online  
Total courses: 8  
Commence: Semester 1 or Semester 2  
CRICOS code: Not available to international students on a Student visa  
Comprehensive program information and admission requirements:  
[www.usc.edu.au/SC611](http://www.usc.edu.au/SC611)

### Master of Health Promotion

Full-time: 1.5–2 years (minimum)  
Part-time: 6 years (maximum)  
Study mode: on campus (multi-modal); online  
Total courses: 12  
Commence: Semester 1 or Semester 2  
CRICOS code: 061061D  
Comprehensive program information and admission requirements:  
[www.usc.edu.au/SC711](http://www.usc.edu.au/SC711)

## Work proactively with people to address the determinants of health and wellbeing.

Based on a socio-ecological model of health, the Health Promotion suite explores contemporary health promotion at individual, group, organisation, community and population levels. Core study concepts include foundations, values and principles of health promotion; the assessment of health needs; and the planning, implementation and evaluation of health promotion programs in a range of settings.

The Graduate Certificate consists of four courses and fully articulates into the Graduate Diploma in Health Promotion. If you wish to study for a higher qualification, the Graduate Diploma fully articulates into the Master of Health Promotion.

The Graduate Certificate is ideal for professionals such as teachers, social workers, urban planners, environmental health officers, fitness trainers, allied health workers, therapists, nurses or doctors,

or anyone who wishes to develop their health promotion knowledge and skills for application within their current roles.

The Graduate Diploma and Master of Health Promotion are designed for those looking to work in designated health promotion roles, or for those wanting to develop deeper knowledge and skills in health promotion to complement their current roles. Some employers, for example Queensland Health, require applicants to have completed at least the equivalent of the Graduate Diploma in Health Promotion to be considered for employment as health promotion practitioners.

These programs give you the flexibility to study courses on campus, online, or a mixture of the two delivery modes. You can change study modes at any time during your program. Teaching, learning and assessment items develop your theoretical

knowledge and understanding through the completion of practical and creative tasks. Some courses in the Health Promotion programs are available online only; however, students enrolled in online courses also have access to course coordinators for consultations and enquiries. For international students on a Student visa—limits apply to online courses, refer to specific program notes.

### PROFESSIONAL RECOGNITION

Graduates are eligible for membership of the Australian Health Promotion Association, the Public Health Association of Australia, and the International Union for Health Promotion and Education.

**Offered by:** Faculty of Science, Health, Education and Engineering, School of Health and Sport Sciences.

## NURSING (GENERAL PRACTICE)

GRADUATE CERTIFICATE IN...

- Develop your knowledge and skills to practise competently
- Adapt knowledge and skills directly to your work environment
- Work in a rapidly growing nursing specialty

### Graduate Certificate in Nursing (General Practice)

Full-time: not available full-time  
Part-time: 1 year minimum, 2 years maximum  
Study mode: on campus (blended)  
Commence: Semester 1 or Semester 2  
Total courses: 4  
CRICOS code: Not available to international students on a Student visa  
Comprehensive program information and admission requirements:  
[www.usc.edu.au/SC505](http://www.usc.edu.au/SC505)

## Designed specifically for current practice nurses.

The Graduate Certificate in Nursing (General Practice) is designed to develop the necessary knowledge and skills to practise competently within the general practice environment, and to contribute to the further development of the specialty.

The aim is to expand the skills and knowledge base of practice nurses and support the development of flexible, informed and evidence-based practices. The program is particularly designed to enable students to apply and adapt new knowledge and skills directly to their work environment.

To ensure accessibility and flexibility, the program is available online. Professional placement in a General Practice is included for students who are not employed as a practice nurse. Assessment is tailored to meet student learning needs.

Applicants must be Registered Nurses, with a current licence to practice with the Australian Health Practitioner Regulation Agency (AHPRA).

**Offered by:** Faculty of Science, Health, Education and Engineering, School of Nursing and Midwifery.



## NURSING (ADVANCED PRACTICE)

POSTGRADUATE CERTIFICATE IN...

MASTER OF...

MASTER OF... (EMERGENCY CARE)

- Professional development for Registered Nurses
- Choose a clinical speciality focus
- Gain leadership skills and enhance your practice

### Postgraduate Certificate in Nursing (Advanced Practice)

Full-time: not available full-time

Part-time: 2 semesters

Study mode: on campus (blended)

Total courses: 4

Commence: Semester 1 or Semester 2

CRICOS code: Not available to international students on a Student visa

Comprehensive program information and admission requirements:  
[www.usc.edu.au/SC540](http://www.usc.edu.au/SC540)

### Master of Advanced Nursing Practice

Full-time: 1 year

Part-time: 2 years

Study mode: on campus (blended)

Total courses: 8

Commence: Semester 1 or Semester 2

CRICOS code: Not available to international students on a Student visa

Comprehensive program information and admission requirements:  
[www.usc.edu.au/SC740](http://www.usc.edu.au/SC740)

### Master of Advanced Nursing Practice (Emergency Care)

Full-time: 1 year

Part-time: 2 years

Study mode: on campus (blended)

Total courses: 8

Commence: Semester 1 or Semester 2

CRICOS code: Not available to international students on a Student visa

Comprehensive program information and admission requirements:  
[www.usc.edu.au/SC741](http://www.usc.edu.au/SC741)



## Enhance your nursing practice and job opportunities.

Designed specifically for Registered Nurses, this suite includes study in leadership to enable you to explore opportunities for practice development, and to extend your knowledge in relation to clinical governance, legal and ethical issues.

The Postgraduate Certificate in Nursing (Advanced Practice) provides educational opportunities to advance your knowledge and skills in the area of physical, psych-social and mental health assessment, as well as explore your area of clinical expertise at an advanced level. This is a stand-alone program, but

also forms the first four courses in both the Master of Advanced Nursing Practice and the Master of Advanced Nursing Practice (Emergency Care).

The Master of Advanced Nursing Practice allows you to develop your capabilities in providing leadership in practice in the future. You can choose electives that enhance your practice and broaden your knowledge as it relates to health and nursing.

The Master of Advanced Nursing Practice (Emergency Care) offers you the opportunity to add

to your knowledge and skills, with studies in the challenging area of emergency nursing.

These advanced nursing programs are delivered in blended mode. Courses use a combination of online learning and on-campus intensive workshops. Assessment is tailored to meet your clinical learning needs and provides the opportunity to demonstrate advanced assessment skills.

**Offered by:** Faculty of Science, Health, Education and Engineering, School of Nursing and Midwifery.

## NURSING (MENTAL HEALTH)

MASTER OF...

- Professional development for Registered Nurses
- Learn to work in a mental health setting
- Gain leadership skills and enhance your practice

### Master of Mental Health Nursing

Full-time: 1 year

Part-time: 2 years

Study mode: on campus (blended)

Total courses: 8

Commence: Semester 1 or Semester 2

CRICOS code: 060945J

Comprehensive program information and admission requirements:  
[www.usc.edu.au/SC720](http://www.usc.edu.au/SC720)

## Become a specialist mental health nurse.

This program prepares Registered Nurses to function as specialist mental health nurses in a variety of mental health care settings. It aims to produce graduates who are critical thinkers that effectively use available evidence and reflective practices to enhance their clinical effectiveness.

Gain an understanding of the fundamentals of modern mental health nursing practice through an examination of the history of psychiatry and different approaches to the care of people with mental disorders. Examine and critique advanced assessment tools used in mental health care, particularly in the assessment of risk. Develop your knowledge, skills and abilities, and use evidence as a base for early interventions and family work, the management of clients with alcohol and other drug dependencies, motivational interviewing, and crisis intervention.

Examine social dimensions of mental health including contemporary cultural and social theories that shape how mental disorders are conceptualised and treated. Explore and critically reflect on political, moral and ethical perspectives relevant to the Australian mental health system. Develop your interpersonal skills through a variety of reflective practices such as peer review, consumer feedback, clinical supervision, mentorship and preceptorship.

Offered in blended mode, some courses lend themselves to weekly or regular class attendance throughout the semester, while others run in a series of full- or part-day intensive workshops with greater online support of students. Some

courses in the Master of Mental Health Nursing are available online only; however, students enrolled in online courses also have access to course coordinators for consultations and enquiries. This flexibility in attendance responds to the varied work patterns of Registered Nurses and increases your ability to schedule university study around work commitments. For international students on a Student visa—limits apply to online courses, refer to the website.

A diversity of assessment methods are used to develop a wide range of advanced mental health nursing practices, and to allow you to focus on particular aspects of your mental health nursing practice that may be unique to your setting or interest. These include practice-based assignments, seminar presentations, group work, self-assessment, peer assessment, contract learning, and reflective assessment tasks.

### PROFESSIONAL RECOGNITION

Graduates are eligible to apply to be credentialed as a Mental Health Nurse by the Australian College of Mental Health Nurses.

Credentialing entitles you to use the letters "MHN" after your name and to work in private practice under the mental health nurse incentive program. Students are expected to be working in a relevant area so that clinical experience is complementary.

**Offered by:** Faculty of Science, Health, Education and Engineering, School of Nursing and Midwifery.

## MIDWIFERY

### MASTER OF...

- Qualify for registration as a midwife
- Gain extensive clinical experience
- Work in maternity care settings across Australia

#### Master of Midwifery

Full-time: 1.5 year

Part-time: 3 years

Study mode: on campus (blended)

Total courses: 10

Commence: Pathway 1 - Semester 1 only

Pathway 2 - Semester 1 or Semester 2

CRICOS code: Not available to international students on a Student visa

Comprehensive program information and admission requirements:  
[www.usc.edu.au/SC723](http://www.usc.edu.au/SC723)

Applications close: 31 October 2012 for study commencing Semester 1, 2013; 31 May 2013 for study commencing Semester 2, 2013.



### Work as a trained professional in maternity care settings.

The Master of Midwifery program gives you the opportunity to develop a solid foundation of knowledge in maternal, fetal and neonatal anatomy and physiology, as well as clinical diagnostic approaches, pharmacology and pharmacokinetics. In this program you will focus on contemporary approaches to women's health, maternity and infant care as well as an emphasis on the social, psychological, emotion, spiritual and cultural factors that influence health and wellbeing during the childbearing years.

#### This program is designed to offer two educational pathways.

**Pathway 1** (Pre registration)<sup>†</sup> provides the opportunity for Registered Nurses to develop the knowledge, skill and aptitude necessary for entry to midwifery practice in Australia. On the completion of this program you will be able to demonstrate achievement of the ANMC National Competency Standards for the Midwife and be eligible to apply for registration as a midwife with the Nursing and Midwifery Board of Australia Australian Health Practitioners Regulatory Agency.

**Pathway 2** (Post registration) provides the opportunity for Registered Midwives to continue professional development and attain a postgraduate qualification. On completion of the program you will demonstrate advanced knowledge and skills for midwifery practice.

**Applicants for Pathway 1** will normally have a degree in nursing or related discipline and be a Registered Nurse (Division 1) with the Nursing and Midwifery Board of Australia (NMBA); and have a confirmed clinical placement prior to commencement of the program.

**Applicants for Pathway 2** will normally have a degree in nursing, midwifery or related discipline and be a Registered Nurse and / or Midwife with the Nursing and Midwifery Board of Australia (NMBA).

<sup>†</sup> External Accreditation from NMBA for this Pathway is still pending.

#### PROFESSIONAL RECOGNITION

Graduates will be eligible to apply for registration with the Nursing and Midwifery Board of Australia and will be eligible to apply for membership of The Australian College of Midwives.

#### REGISTRATION

Graduates will be eligible to apply for registration as a midwife in Australia through the Australian Health Practitioner Regulation Agency (AHPRA). The Nursing and Midwifery Board of Australia has a number of registration standards. Graduates must demonstrate that they meet these standards in order to be eligible for registration.

Graduates must demonstrate English language skills at IELTS level 7 (7 in all bands) or equivalent before being considered for professional registration. Test results from relevant examinations will generally need to be obtained within two years prior to applying for registration.

Refer to the Nursing and Midwifery Board website for registration information.  
[www.nursingmidwiferyboard.gov.au/Registration-Standards.aspx](http://www.nursingmidwiferyboard.gov.au/Registration-Standards.aspx)

Offered by: Faculty of Science, Health, Education and Engineering, School of Nursing and Midwifery.

## PSYCHOLOGY (CLINICAL)

### MASTER OF...

- Gain Associate Membership of the Australian Psychological Society's College of Clinical Psychologists
- Undertake supervised practicum placements in a range of settings
- Extend your knowledge and research a topic of interest

#### Master of Psychology (Clinical)

Full-time: 2 years

Part-time: 4 years

Study mode: on campus

Total courses: 16

Commence: Semester 1 only †

CRICOS code: 070701B

Comprehensive program information and admission requirements:  
[www.usc.edu.au/AR703](http://www.usc.edu.au/AR703)

<sup>†</sup> Applications close: Friday 28 September 2012, for study commencing in 2013.

### Gain registration to practice as a clinical psychologist.

The Master of Psychology (Clinical) trains psychology graduates in clinical psychology to meet the requirements for registration to practise as clinical psychologists.

The program has three major components—coursework in professional and clinical psychology, supervised practicum placements, and a research project and thesis. Coursework delivery is via a combination of lectures, seminars, practical exercises, written assignments, and skills demonstration and practice.

Practicum placements involve you working as a provisional clinical psychologist, under appropriate supervision, in a range of settings beginning in the University's Psychology Clinic. Your work is assessed through written reports, case presentations, professional portfolios and observation by supervisors and the course coordinator.

The research project involves a review of relevant literature leading to a research question, design and conduct of an appropriate study, data collection and

analysis, and preparation of a thesis consisting of the literature review and a report of the research study.

The thesis is assessed by independent examination.

#### ACCREDITATION

Accredited by The Australian Psychology Accreditation Council (APAC) and approved by The Australian Psychological Society (APS) College of Clinical Psychologists as a fifth and sixth year program in Psychology, graduates of the Master of Psychology (Clinical) are eligible to apply to the Psychologists Board of Australia (PBA) for full registration.

#### PROFESSIONAL RECOGNITION

Graduates are eligible for Associate Membership of the Australian Psychological Society's College of Clinical Psychologists.

Offered by: Faculty of Arts and Business, School of Social Sciences.

# HUMANITIES AND SOCIAL SCIENCES

## ARTS

GRADUATE CERTIFICATE IN...  
GRADUATE DIPLOMA IN...

- Acquire new skills sets or knowledge
- Add value to your existing qualifications
- Choose your study area from a diverse range of fields

### Upgrade your skills and increase your employment opportunities.

In a time when employees experience several changes of career during their work life, it is beneficial to acquire different skills sets and knowledge. The graduate Arts programs afford you the opportunity to follow your interests, to enhance your quality of life aspirations, or to satisfy curiosity-driven study.

Complete the Graduate Certificate in Arts and add value to your existing qualifications by completing a suite of four thematically based courses. The Graduate Certificate is a one-semester-equivalent full-time program that you can study across one to four semesters, depending on your choice of discipline and courses. You may require a Blue Card# depending on the courses you choose.

The Graduate Diploma in Arts extends the offer by allowing you to study a suite of eight thematically based courses in your chosen discipline. You may elect to study all eight courses in one area, effectively completing a School of Communication or School of Social Sciences major; or you can complete two complementary minors; or one minor and one specialisation. This is a two-semester-equivalent full-time program. You can complete it across two to six semesters, depending on your discipline and course choices.

#### Graduate Certificate in Arts

Full-time: 6 months (minimum)  
Part-time: 2 years (maximum)  
Study mode: on campus  
Total courses: 4  
Commence: Semester 1 or Semester 2  
CRICOS code: Not available to international students on a Student visa  
Comprehensive program information and admission requirements: [www.usc.edu.au/AR505](http://www.usc.edu.au/AR505)

#### Graduate Diploma in Arts

Full-time: 1 year  
Part-time: 2-4 years (maximum)  
Study mode: on campus  
Total courses: 8  
Commence: Semester 1 or Semester 2  
CRICOS code: 069714G†  
Comprehensive program information and admission requirements: [www.usc.edu.au/AR605](http://www.usc.edu.au/AR605)



You can select a minor in any of the following disciplines: 3D Design; Australian Studies; Child Protective Practices; Communication Studies; Community Development; Comparative Studies; Creative Advertising; Creative Writing; e-Media Design; English; Geography; Graphic Design; History; Indonesian; Italian; Japanese; Justice Studies; Legal Studies; Planning Studies; Politics and International Relations; Public Policy; Public Relations; Sociology; Sustainability or a specialisation in Indigenous studies.

For Graduate Diploma students, majors are available in: 3D Design; Australian Studies; Communication Studies; Counselling Studies; Creative Writing; e-Media Design; English; Geography; Graphic Design; History; Italian; Japanese; Journalism; Justice Studies; Politics and International Relations; Public Relations; or Sociology.

† Note: Some majors and minors cannot be completed in two semesters and are therefore not available to international students on a Student visa. Check the website for details.

# Blue Cards are issued by the Commission for Children and Young People and Child Guardian. For more information on Blue Cards, and how to apply, visit [www.ccyecg.qld.gov.au/bluecard/about.html](http://www.ccyecg.qld.gov.au/bluecard/about.html)

Offered by: Faculty of Arts and Business, School of Communication.

## COUNSELLING

MASTER OF...

- Obtain a professional counselling degree
- Work towards professional registration
- Pursue a career as a school counsellor

#### Master of Counselling

Full-time: 2 years  
Part-time: 4 years  
Study mode: on campus  
Total courses: 16  
Commence: Semester 1 or Semester 2  
CRICOS code: Not available to international students on a Student visa  
Comprehensive program information and admission requirements: [www.usc.edu.au/AR708](http://www.usc.edu.au/AR708)

### Advance your career and earn a professional counselling degree.

The Master of Counselling offers preparation for a position in counselling for practitioners from a variety of backgrounds. It provides career opportunities in private practice, education, and health and human service settings. It will interest professionals seeking a career change, or those wishing to fine-tune qualifications by adding vocational emphasis or gain an academic qualification to formalise years of work experience. It will be of particular relevance to teachers pursuing a career as a school counsellor in the independent school education system, and those interested in work in the healthcare field.

The program provides practical training in professional counselling, family therapy, and ethical practice in a live clinical context. You examine counselling interventions and clinic preparation, and undergo a clinical practice component in a USC Community Counselling Clinic. Here you gain skills by completing up to 200 hours of counselling and supervision tasks, and your team-based clinical practice is carefully supervised. You undertake an industry research project to review and analyse your counselling practice in the clinic, and prepare an article on a counselling issue related to your practice.

The Master of Counselling is available to students with an approved three-year degree in a related area such as teaching, nursing or other human services/health-related area. Responding to market demand, it produces postgraduate counsellors with extended

and advanced counselling practice skills, as well as advanced skills in specific areas such as counselling in mental health, counselling in addictions, or counselling children, young people and their families.

#### REQUIREMENTS FOR PLACEMENTS

You must hold a current Blue Card# before starting your first supervised counselling experience. Blue Card applications should be submitted with your application to USC. If you do not submit an application, or apply but are ineligible, you will not be able to undertake the professional experience components of the program.

#### PROFESSIONAL RECOGNITION

Graduates will be eligible to apply for membership with the Psychotherapy and Counsellors Federation of Australia (PACFA) via membership of a recognised member association and, following completion of further supervised practice, clinical registration with PACFA and registration with the Australian Register of Counsellors and Psychotherapists (ARCAP).

# Blue Cards are issued by the Commission for Children and Young People and Child Guardian. For more information on Blue Cards, and how to apply, visit [www.ccyecg.qld.gov.au/bluecard/about.htm](http://www.ccyecg.qld.gov.au/bluecard/about.htm)

Offered by: Faculty of Arts and Business, School of Social Sciences.

## COUNSELLING PRACTICE

### MASTER OF...

- Develop advanced counselling practice skills
- Gain supervised practice hours via live supervision and client contact
- Achieve Mental Health/Addiction counselling competencies

#### Master of Counselling Practice

Full-time: not available full-time

Part-time: 3 years

Study mode: on campus

Total courses: 12

Commence: Semester 1

CRICOS code: Not available to international students on a Student visa

Comprehensive program information and admission requirements:  
[www.usc.edu.au/AR709](http://www.usc.edu.au/AR709)



## Enhance your clinical practice skills as a professional counsellor.

The Master of Counselling Practice is an innovative program that blends flexible delivery modes with contemporary teaching and learning practices to advance professional counsellors in their knowledge and practice of counselling. The program is well suited to people who work with individuals, families, groups and communities in various fields and circumstances, such as loss and grief issues, mental health and wellbeing, domestic violence, sexual abuse, drug and alcohol issues, relationship issues and others.

Through practical training, you gain advanced knowledge, skills and experience in professional counselling, family therapy, supervision, and ethical practice competencies in a live clinical context. Courses are integrated between counselling and mental health, counselling and addictions, engaging effectively with Aboriginal people, child, adolescent and family relationship counselling, and counselling interventions focusing on experiential practices.

You undertake your clinical practice component in USC's Community Counselling Centre and complete up to 200 hours of counselling and supervision tasks as a member of a reflecting team. These counselling and supervision sessions encompass a variety of approaches and paradigms, and your team-based clinical practice is carefully supervised. You also complete an industry research project to analyse your counselling practice in the clinic, and prepare an article on a counselling issue related to your practice framework.

As a graduate, you can expect to find career opportunities in human service settings such as health, welfare, community services, human resources, private practice counselling, education, child and family services, child protection services, family counselling and rehabilitation counselling.

The program is offered to those with an approved three-year undergraduate degree in the discipline, who wish to acquire advanced professional and counselling skills. Applicants are required to complete an additional questionnaire and attend an interview.

#### REQUIREMENTS FOR PLACEMENTS

You must hold a current Blue Card<sup>#</sup> before starting your first supervised counselling experience. Blue Card applications should be submitted with your application to USC. If you do not submit an application, or apply but are ineligible, you will not be able to undertake the professional experience components of the program.

#### PROFESSIONAL RECOGNITION

Graduates will be eligible to apply for membership with the Queensland Counsellors Association; Queensland Association for Family Therapists; Psychotherapy and Counselling Federation of Australia (PACFA); and Australian Register of Counsellors and Psychotherapists (ARCAP).

If you elect to follow the Mental Health or the Addiction stream, you will also be eligible to apply for registration with the Psychotherapy and Counselling Federation of Australia (PACFA) Register of Mental Health Practitioners; and Australian Register of Counsellors and Psychotherapists (ARCAP) Sub-Register of Mental Health Practitioners.

<sup>#</sup> Blue Cards are issued by the Commission for Children and Young People and Child Guardian. For more information on Blue Cards, and how to apply, visit [www.ccyepqld.gov.au/bluecard/about.html](http://www.ccyepqld.gov.au/bluecard/about.html)

Offered by: Faculty of Arts and Business, School of Social Sciences.

## FUTURES STUDIES

### GRADUATE CERTIFICATE IN...

- Help shape the future of our world
- Contribute to the wellbeing of society
- Generate alternatives for better opportunities

#### Graduate Certificate in Futures Studies

Full-time: not available full-time

Part-time: 1 year

Study mode: on campus; online

Total courses: 4

Commence: Semester 1 or Semester 2

CRICOS code: Not available to international students on a Student visa

Comprehensive program information and admission requirements:  
[www.usc.edu.au/AR510](http://www.usc.edu.au/AR510)

## Learn how to anticipate and effectively manage change.

Futures Studies is a powerful tool for managing institutional dynamics and negotiating periods of change. It seeks to empower you to identify and engage with the forces that shape your operational and working contexts. It has strategic value to anyone working in business and government where change is rapid and creative open-ended thinking a necessary tool for negotiating turbulence and rapid change. It is therefore a vehicle that develops personal and social adaptive capacity, and can contribute substantially to social and economic wellbeing.

The Graduate Certificate in Futures Studies provides you with a sound foundational knowledge of the futures field. It introduces a range of futures methods, concepts and tools designed to help you better understand your working context and future proof your organisation. The program hones leadership skills, covers a wide range of facilitation techniques, links personal and organisational values to actions and their outcomes, and stimulates creative engagement that generates a range of alternatives to business as usual for you and your organisation.

Futures Studies is therefore about the present. The present reinvented in the light of probable, possible, and preferable futures that may occur as a result of social, technological, environmental, economic or

cultural change. It hinges on flexibility of thinking, the ability to reframe context and critically assess our role in its maintenance, and to identify points of leverage that, when addressed, can lead to new possibilities. It is increasingly becoming a frame of reference for government, business, education and community development. The core business of all such sectors is an ability to manage change, anticipate, and align strategy with desired outcomes.

This program fosters strategic foresight, which is of key relevance to emerging issues facing our region and the planet. It draws on the innate capacity of the human mind to engage in foresight or futures thinking. You learn to clarify values and develop effective strategic processes to navigate a turbulent environment where success and failure impact on both present and future generations. Courses blend academic and action-based learning to bridge the divide between theory and practice. All courses are offered in both face-to-face on campus or fully external (online) modes; with the exception of FUT700 Applied Futures Studies: Methods, Value and Strategy, which is only available online.

Offered by: Faculty of Arts and Business, School of Social Sciences.

# REGIONAL AND URBAN PLANNING

MASTER OF...

- Gain entry to the planning profession
- Study at your own pace with distance education
- Focus on a specialist planning area

## Help your community plan for a sustainable future.

The Master of Regional and Urban Planning# provides a postgraduate pathway to enter the planning profession and work as a planner. It focuses on the planning challenges of regional Australia, especially regions subject to high growth with associated environmental and community issues.

The program delivers both planning knowledge and skills, and you focus on a specialist planning area. With a strong emphasis on reflective learning, you draw on your formal and informal experiences in planning-related organisations and activities. You develop a specialist area of knowledge and are encouraged to think about major planning issues from a multi-disciplinary perspective.

Courses are delivered in one of two modes. In some courses you need to attend short intensive blocks, which are supported by books of readings and online resources. In others, you study online and receive study materials, use online resources and complete all assessment using the discussion board or written assessment in the form of reports, essays and urban place exercises.

You complete courses in contemporary planning theory, environmental and planning law, planning practice, and effectively engaging with Aboriginal people. You select a further five courses from



### Master of Regional and Urban Planning

Full-time: 2 years

Part-time: 4 years

Study mode: on campus (intensive); online

Total courses: 16 (equivalent)

Commence: Semester 1 or Semester 2

CRICOS code: Not available to international students on a Student visa

Comprehensive program information and admission requirements: [www.usc.edu.au/AR705](http://www.usc.edu.au/AR705)

research design: methodology of literature review, urban design, water allocation and planning, participation and conflict resolution, applied futures studies, and Indigenous peoples and sustainability.

You then complete three courses from a specialised area, such as integrated coastal zone management or climate change adaptation, plus a planning thesis or a planning research project. The thesis component is only available if you meet the academic standard (GPA 5.5) and wish to complete a thesis. Otherwise you must complete the research project and two electives.

To enter the Master of Regional and Urban Planning you will normally be required to hold

a Bachelor degree from a recognised University. You will need access to a computer to enable you to use Blackboard and participate in on-line learning sessions.

Graduates can expect to find career opportunities as a planner in a regional council or planning consultancy, or as a policy analyst in the Department of Environment and Resource Management or other government departments.

# This program has interim accreditation with the Planning Institute of Australia.

**Offered by:** Faculty of Arts and Business, School of Social Sciences.

# SOCIAL WORK (QUALIFYING)

MASTER OF...

- Advance your career with a portable, professional qualification
- Gain entry to the Australian Association of Social Workers
- Placements offer extensive field education and experience

## Become an accredited practitioner and create a more socially just world.

The Master of Social Work (Qualifying)† prepares professionals to work with individuals, families, groups and communities across the domains of policy, practice, theory and research. It creates a new pathway for entry into the social work profession and provides opportunities for you to advance in your career and move between different forms of employment.

The program follows the accreditation requirements of the Australian Association of Social Workers (AASW) and delivers requisite knowledge, values and skills for the social work profession. You complete ten 12-unit courses plus two 36-unit (490-hour) field education placements.

In the coursework component you gain a critical understanding of society and how it has developed and is organised; knowledge of social welfare arrangements, their history and organisation, and related law in Australia; and knowledge of the individual, including human behaviour and

development, personality development, life cycle stages, family and social networks, physical health and ill-health, mental health, disability, vulnerability and resilience.

Your field education placements (980 hours) provide extensive field education and experience, and enable you to integrate social work theory and practice-based learning in a structured, safe and supported learning environment. You must complete the field education placements to graduate. You may be required to undertake a criminal history check and apply for a Blue Card#. You must have your own means of transport.

As a graduate, you will be well prepared to work in government organisations, community agencies and private practice in both local and international contexts. As a practitioner, you will be proficient in critically analysing and formulating creative responses to social, political, cultural, historical or gendered disadvantage faced by vulnerable

citizens through various modes of practice, such as case management, counselling, policy analysis and development, organisational management, social action, advocacy, community development, education and research.

Depending on your educational history, there are two pathways of entry into this masters program. Generally, applicants will have a completed bachelor degree deemed relevant by the faculty to social work. Other applicants who hold a bachelor degree without any social, health or behavioural science background, will need to complete prior to entry three specified foundation courses in social work, sociology and psychology. If you are required to complete the prerequisite courses, you can do so either as a Visiting Student or by enrolling in the Graduate Certificate in Arts. Depending on your course selection, you can complete these requirements across one or two semesters.

### PROFESSIONAL RECOGNITION

Graduates will be eligible for membership to the AASW and to practice as professional social workers. Membership to the AASW enables you to apply to become a mental health accredited practitioner, which attracts a Medicare rebate for private practitioners.

† Provisionally accredited by the Australian Association of Social Workers (AASW).

# Blue Cards are issued by the Commission for Children and Young People and Child Guardian. For more information on Blue Cards, and how to apply, visit [www.ccyptcg.qld.gov.au/bluecard/about.html](http://www.ccyptcg.qld.gov.au/bluecard/about.html)

**Offered by:** Faculty of Arts and Business, School of Social Sciences.



# SCIENCE AND SUSTAINABILITY

## CLIMATE CHANGE ADAPTATION

MASTER OF ...

- Learn to assess and propose options for adaptation to climate change
- Build knowledge incorporating global and regional perspectives
- Combination of on-campus courses and independent projects



### Master of Climate Change Adaptation

Full-time: 1.5 years (minimum)

Part-time: 6 years (maximum)

Study mode: on campus (intensive)

Total courses: 12

Commence: Any time as applicable to individual student course timetable

CRICOS code: 063013G†

Comprehensive program information and admission requirements: [www.usc.edu.au/SC708](http://www.usc.edu.au/SC708)

## Proactively address the implications of climate change.

In this program, you gain an in-depth understanding of the natural and human-induced factors responsible for the rapid rates of environmental and climate change. You examine the types of governance and community-based responses required to address the impacts and vulnerabilities, and acquire practical problem-solving skills in adaptive environmental assessment and integrated management systems.

The theoretical understanding and practical tools enable you, as a practitioner, to integrate best-practice vulnerability assessment tools and techniques effectively with nationally and internationally endorsed environmental management systems. The purpose is to adapt to the effects of climate change and manage project outcomes that enable environmental resilience.

You acquire skills through a combination of lectures, readings, group discussions and practical projects. Your assessment is based on a combination of

individual and group project tasks. Classes enable students to develop skills in problem definition, data and information manipulation, management and application. Some classes address the preparation of vulnerability assessment documents and environmental management plans for environmental and natural resources management.

### PROFESSIONAL RECOGNITION

Graduates of the Master of Climate Change Adaptation can work towards accreditation as an environmental practitioner from the Environment Institute of Australia and New Zealand (EIANZ), or equivalent overseas accreditation body.

### INTENSIVE DELIVERY

The Climate Change Adaptation program is run in an intensive mode. All courses are offered nominally during Semester 1 or 2 each year, but are also run in intensive sessions. Students should

refer to the Faculty of Science, Health, Education, and Engineering course schedule, as sessions can vary from year to year. Intensive delivery requires a student activity investment of 120 hours. Approximately 60 hours will be undertaken over 6–7 consecutive days on campus for lecture-based courses. In most cases, courses run from for a week including weekends. The remaining 60 hours is required for independent student-learning activities, both before and after the on-campus component, which may include readings, exercises and the preparation of assessment items.

† International students on a Student visa: please be aware that some courses in this program require project work and/or independent study and therefore have limited on-campus contact. Check the website for details.

**Offered by:** Faculty of Science, Health, Education and Engineering, School of Science, Education and Engineering.

## SUSTAINABILITY

GRADUATE CERTIFICATE IN ...

- Help chart a sustainable future
- Learn to direct societal change
- You CAN make a difference

## Make a difference and become an innovator in sustainability.

Study this innovative program to gain an understanding of the principles underpinning sustainability. You learn about the latest tools and technologies to achieve sustainable outcomes at individual and societal levels, and explore systems approaches to chart sustainable futures.

You explore sustainability in contemporary society and examine aspects such as socio-ecological trends, historical underpinnings, leadership and governance, and future scenarios. You are encouraged to examine your own personal ideologies and to reflect on educational and societal influences.

From individual and societal perspectives, you study the most pressing sustainability issues and design strategies focused on achieving sustainability at local, regional and global scales. Encouraged to think as a global citizen, you apply the latest theory to real-world examples.

As a sustainability professional, you will have innovative and adaptable problem-solving skills for a rapidly changing world. Skills enabling you



to tackle pressing issues such as climate change and take advantage of opportunities such as the emerging green economy. As a graduate, you can expect to find employment in all tiers of government and private industry, both within Australia and internationally.

With both on-campus and online modes of study, as well as the option of mid-year entry, studying sustainability has never been more accessible.

**Offered by:** Faculty of Arts and Business, School of Social Sciences.

### Graduate Certificate in Sustainability

Full-time: not available full-time

Part-time: 1 year

Study mode: on campus; online

Commence: Semester 1 or Semester 2

Total courses: 4

CRICOS code: Not available to international students on a Student visa

Comprehensive program information and admission requirements: [www.usc.edu.au/SC525](http://www.usc.edu.au/SC525)

# Questions? Answered.

## Student Administration

Your primary contact for information about how to apply and enrol, fees, financial assistance and scholarships, program admission requirements, special entry programs, applying for credit transfer, examinations and results and graduation.

Tel: ..... 07 5430 2890  
Email: ..... information@usc.edu.au  
On campus: ..... Student Central, Building C  
[www.usc.edu.au/studentadministration](http://www.usc.edu.au/studentadministration)

## Student Services

Contact Student Services for advice about academic and study support, accommodation and housing, careers and employment, disability and equity, health and wellbeing, Indigenous Australian student support and Orientation.

Tel: ..... 07 5430 1226  
Email: ..... studentservices@usc.edu.au  
On campus: ..... Student Services, Building J  
[www.usc.edu.au/student-services](http://www.usc.edu.au/student-services)

## USC International

USC International is your primary point of contact if you are an international student. They will assist with visa matters, Overseas Student Health Cover (OSHC) and other medical information, accommodation, airport transfers, and activities and events.

Tel: ..... 07 5430 2843  
(outside Australia +61 7 5430 2843)  
Fax: ..... 07 5430 2836  
(outside Australia +61 7 5430 2836)  
Email: ..... international@usc.edu.au  
[www.usc.edu.au/international](http://www.usc.edu.au/international)  
[www.usc.edu.au/goprogram](http://www.usc.edu.au/goprogram)

## Faculties

Student Administration is your primary contact point, but you may be referred to a faculty staff member for specialist information on courses and programs, credit transfer eligibility, internships and work experience, honours and research opportunities.

## Faculty of Arts and Business

Tel: ..... 07 5430 1259  
Email: ..... FABinfo@usc.edu.au  
On campus: ..... Building D  
[www.usc.edu.au/fab](http://www.usc.edu.au/fab)

## Faculty of Science, Health, Education and Engineering

Tel: ..... 07 5430 2869  
Email: ..... SHEinfo@usc.edu.au  
On campus: ..... Building H  
[www.usc.edu.au/she](http://www.usc.edu.au/she)

## Update me

Keep updated with the latest news from USC—sign up for our newsletter and follow us on Facebook.  
[www.usc.edu.au/updates](http://www.usc.edu.au/updates)

## Study USC events

Refer to the back cover for a list of regular information events held throughout the year.

Tel: ..... 07 5456 5000  
Email: ..... options@usc.edu.au  
[www.usc.edu.au/info](http://www.usc.edu.au/info)  
[www.usc.edu.au/openday](http://www.usc.edu.au/openday)

## SOCIAL MEDIA



### Facebook

[www.facebook.com/unisunshinecoast](http://www.facebook.com/unisunshinecoast)

This Facebook page is where you can find lots of other USC-related Facebook pages. Check out the 'Likes' to find Facebook groups to join.



### Twitter

[www.twitter.com/usceduau](http://www.twitter.com/usceduau)



### YouTube

[www.youtube.com/unisunshinecoast](http://www.youtube.com/unisunshinecoast)



### Flickr

[www.flickr.com/unisunshinecoast](http://www.flickr.com/unisunshinecoast)

## OTHER USEFUL CONTACTS

### Centrelink

#### ABSTUDY

Tel: ..... 132 317

#### Youth and Student Services (including Youth Allowance and AUSTUDY)

Tel: ..... 132 490  
[www.centrelink.gov.au](http://www.centrelink.gov.au)

### Commission for Children and Young People and Child Guardian

#### Blue Cards

Tel: ..... 1800 113 611  
Email: ..... info@ccypcg.qld.gov.au  
[www.ccypcg.qld.gov.au/bluecard](http://www.ccypcg.qld.gov.au/bluecard)

### HECS–HELP/FEE–HELP enquiry line

Australian Government, Department of Education, Employment and Workplace Relations  
Tel: ..... 1800 020 108  
[www.goingtouni.gov.au](http://www.goingtouni.gov.au)

### Queensland Tertiary Admissions Centre (QTAC)

Tel: ..... 1300 467 822  
[www.qtac.edu.au](http://www.qtac.edu.au)

### Queensland Studies Authority (QSA)

Tel: ..... 07 3864 0299  
Email: ..... office@qsa.qld.edu.au  
[www.qsa.qld.edu.au](http://www.qsa.qld.edu.au)

### Sunshine Coast Institute of TAFE

Tel: ..... 07 5459 3000  
[www.sunshinecoast.tafe.qld.gov.au](http://www.sunshinecoast.tafe.qld.gov.au)

### Translink

Tel: ..... 131 230  
[www.translink.com.au](http://www.translink.com.au)

## University TERMINOLOGY

### Wondering what it all means?

For a complete list of university terms, visit the website [www.usc.edu.au/terms](http://www.usc.edu.au/terms)

### Contact hours

Contact hours are the number of hours students are expected to attend classes on campus. A full-time student spends about 12 hours per week in classes, plus between 20 and 40 hours studying per week (five to 10 hours per course).

### Course/program

A course (commonly known as a subject) is a component of an award program that is normally one semester in length. Each course is generally 12 units in value. The standard enrolment for a full-time student is four courses per semester. A program is the complete award with which a student graduates (eg Bachelor of Arts).

### Faculty/school

A faculty is an organisational area within the University devoted to particular academic programs and research (eg Faculty of Arts and Business). Each faculty is headed by a professor, known as an Executive Dean. Schools are organisational areas within a faculty (eg School of Communication in the Faculty of Arts and Business).

### Full-time/part-time study

A full-time student studies at least three courses per semester. The standard full-time workload is four courses per semester. A part-time student studies either one or two courses per semester, with two courses being standard.

### Lecture/tutorial

A lecture involves a member of teaching staff presenting course content to students. Most courses have one weekly lecture. A tutorial or practical (also known as workshop or lab) is a forum for discussion, interaction, presentation and debate. They often give students an opportunity for the practical application of course content.

### Semester/session/trimester

The academic year is divided into two main semesters. Generally, Semester 1 runs from February to June, and Semester 2 from July to November. The Summer session is a teaching period between December and mid-February. Summer courses are delivered in intensive mode. The academic year is also divided into multiple sessions and trimesters. These other sessions are generally for postgraduate studies.

### Undergraduate student/postgraduate student

An undergraduate student studies an associate degree, bachelor degree or honours program. A postgraduate student studies a postgraduate coursework program (eg Graduate Certificate, Graduate Diploma, Masters by coursework) or a higher degree by research (eg Masters by research, Doctor of Philosophy).

# INSPIRING PLACE TO LIVE

# INSPIRING PLACE TO STUDY



University of the  
Sunshine Coast  
Queensland, Australia

The only public uni in  
Queensland with  
5 star teaching quality!



And a higher rating than any  
other public uni in Queensland  
for graduate satisfaction.

2012 ratings: The Good Universities Guide

## THE BEST OF BOTH WORLDS

# Study USC

## 2012 CALENDAR OF EVENTS

[www.usc.edu.au/info](http://www.usc.edu.au/info)

Open Day . . . . . 12 August  
Postgraduate Information Evening . . 7 November  
Options Evening . . . . . 17 December

Printed on Titan Plus Satin, produced in an ISO14001 accredited facility by Hansol-Korea, ensures all processes involved in production are of the highest environmental standards. FSC Mixed Sources CoC certification ensures fibre is sourced from certified and well managed forests.

University of the Sunshine Coast, QUEENSLAND, AUSTRALIA  
Tel: 07 5430 1234 | Fax: 07 5430 1111 | Web: [www.usc.edu.au](http://www.usc.edu.au)  
CRICOS Provider Number: 01595D



**University of the  
Sunshine Coast**  
The best of both worlds